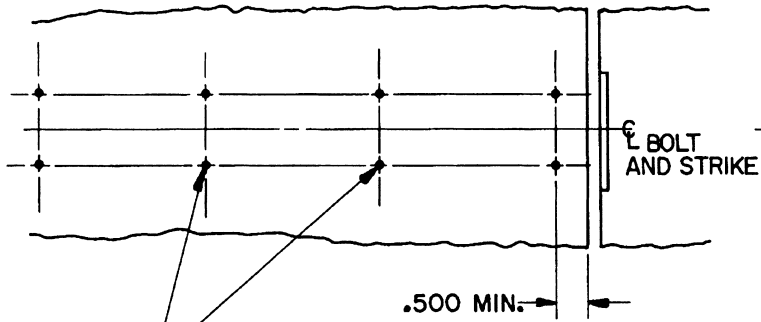
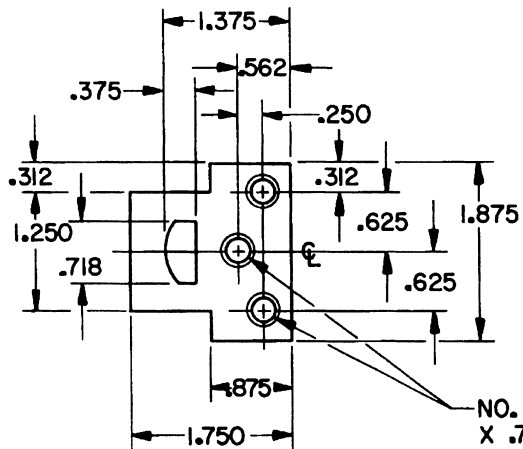


DOOR AND JAMB DETAIL



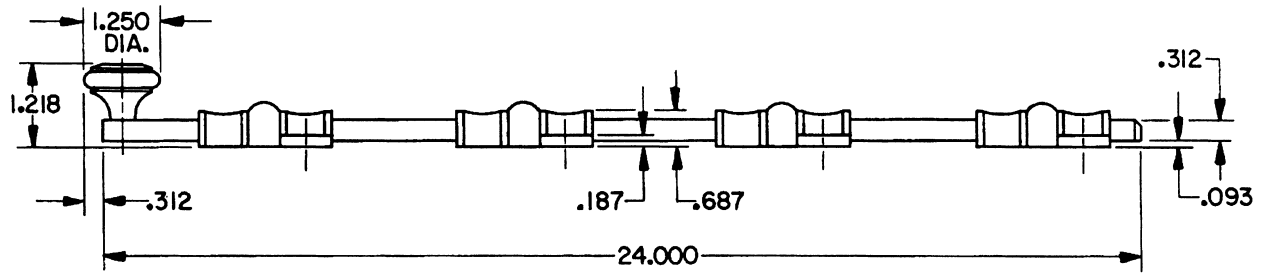
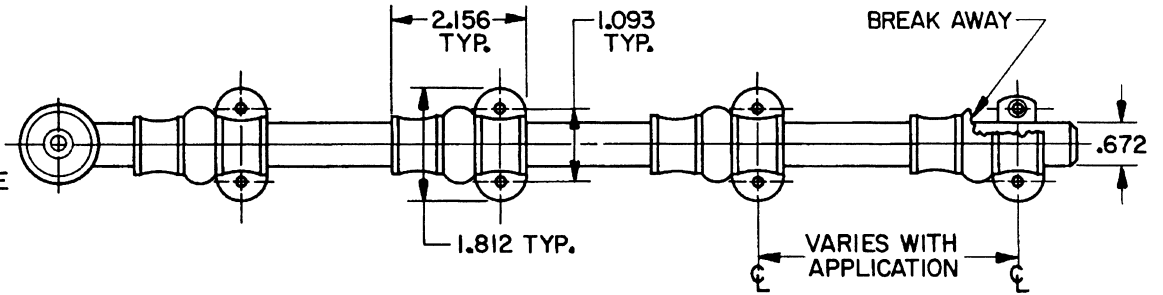
NO. 6 RD. PH. W/S
X 1.00 LG. (4-REQ'D)



NO. 8 FL. PH. W/S
X .750 LG. (3-REQ'D)

UNIVERSAL STRIKE

BOLT DETAIL



EFFECTIVE: 9-1-86 Z.A.S.

B. BALDWIN	
0383 SURFACE BOLT	
TEMPLATE NO. VARIATIONS	TEMPLATE NO.
	A144

DO NOT SCALE DRAWING

©1986 by Baldwin Hardware Corporation