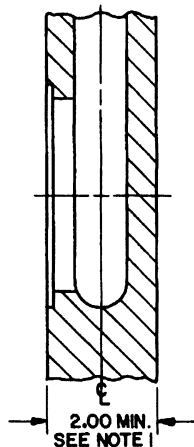
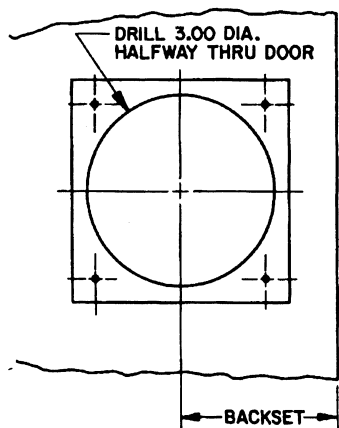
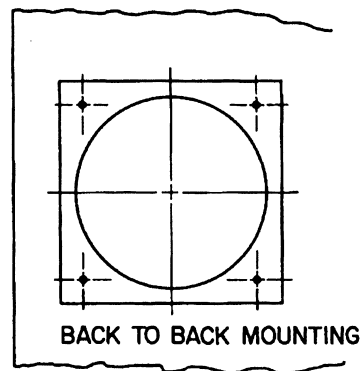
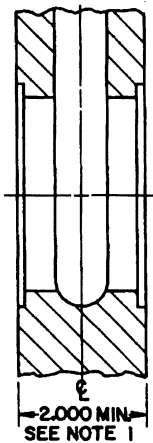
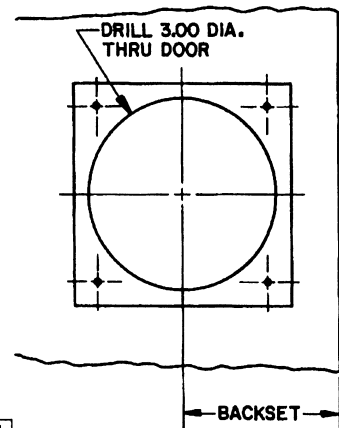


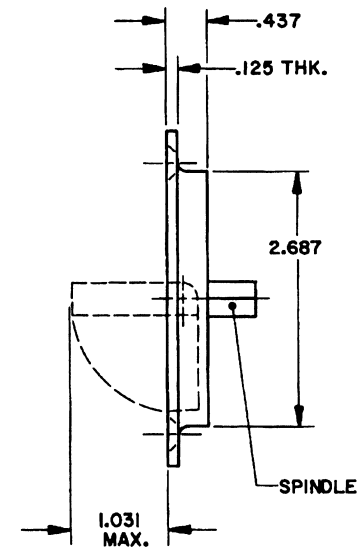
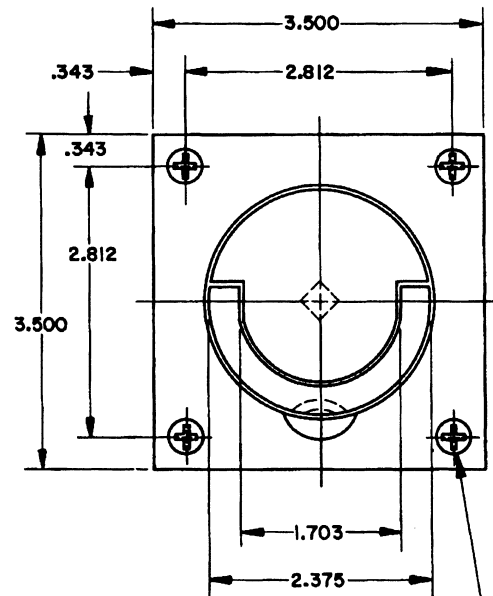
DOOR DETAIL



SINGLE MOUNTING



PULL DETAIL



NO. 8 FL. PH. W/S
X .500 LG. (4-REQ'D)

NOTE:

- 1.) A 2.00 MIN. DOOR THICKNESS IS REQUIRED WHEN USING FLUSH PULL WITH A MORTISE LOCK. A 1.750 THICK DOOR MAY BE USED WITH A .250 MIN. APPLIED PANEL.
- 2.) FOR ADDITIONAL LOCK AND DOOR CUTOUT DIMENSIONS, SEE APPROPRIATE LOCK TEMPLATE.
- 3.) INSTALLATION PLATES ARE NOT REQUIRED FOR THIS TRIM.

EFFECTIVE: 5-1-88 P. A4-5

B. BALDWIN	
0397 FLUSH CUP HANDLE	
TEMPLATE NO. VARIATIONS	TEMPLATE NO.
	A160

DO NOT SCALE DRAWING

© 1988 by Baldwin Hardware Corporation