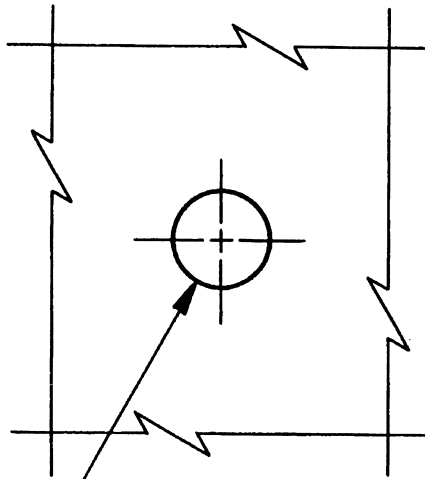
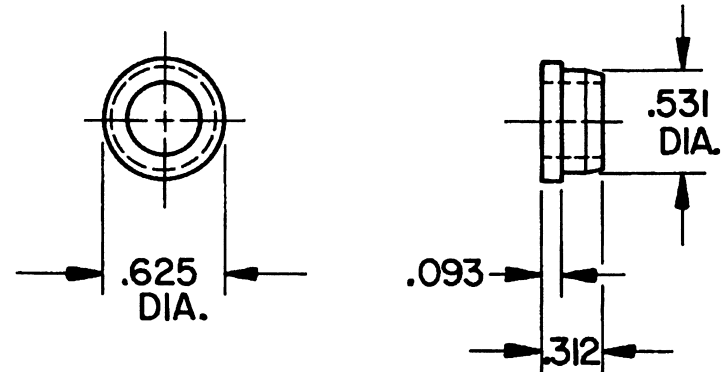


DOOR DETAIL



USE A $33/64$ " (.5156) DIA. DRILL.
BORE HALFWAY THROUGH DOOR ON
ONE SIDE ONLY.
(PLUG TO BE FORCE-FIT INTO DOOR.)

TRIM DETAIL



IMPORTANT NOTE:

TO ENABLE EMERGENCY TRIM TO FUNCTION,
THE TURN PIECE SPINDLE MUST BE CUT TO
EXTEND NO FURTHER THAN HALFWAY THROUGH
THE DOOR.

EFFECTIVE: 5-1-88
Z
M
3

B. BALDWIN

0407 EMERGENCY RELEASE TRIM

TEMPLATE NO. VARIATIONS

TEMPLATE NO.

A168