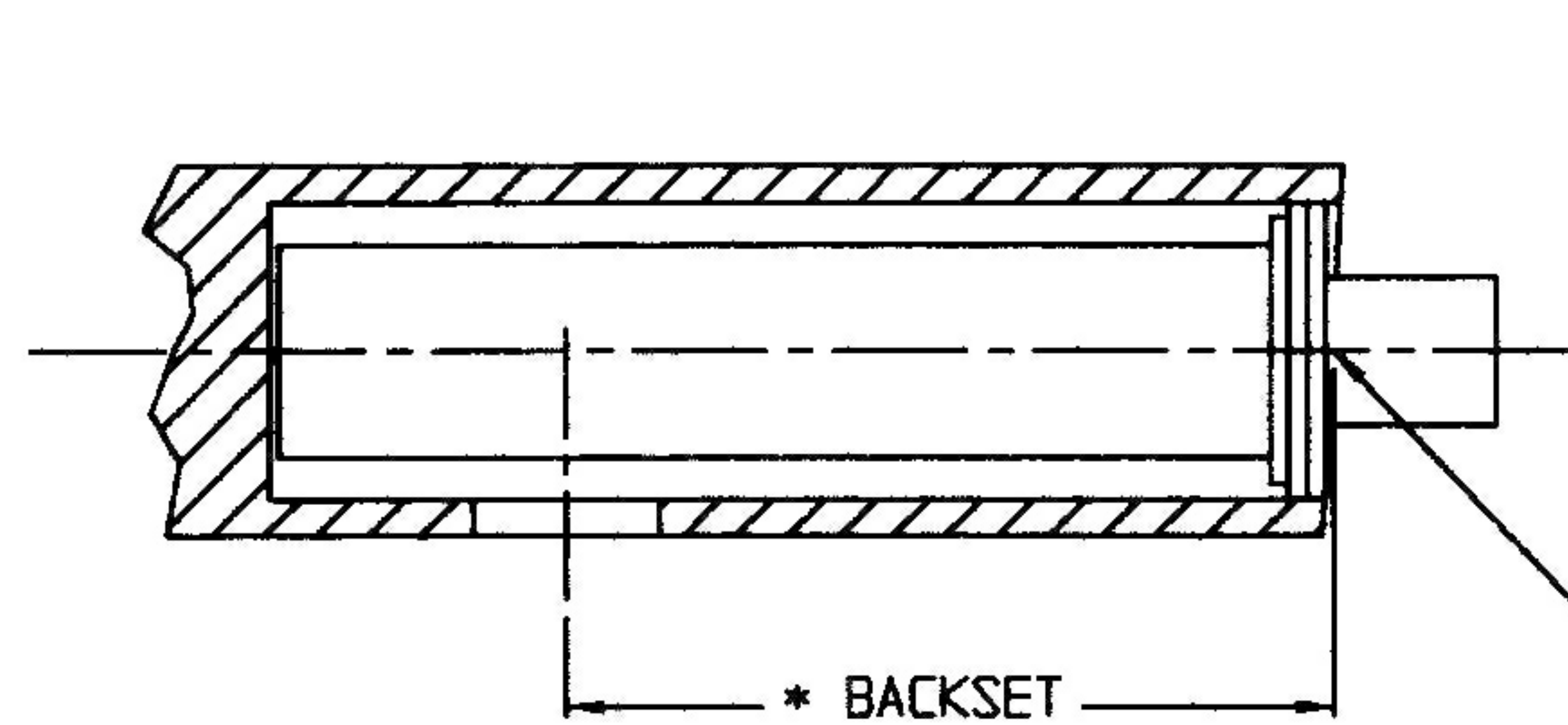
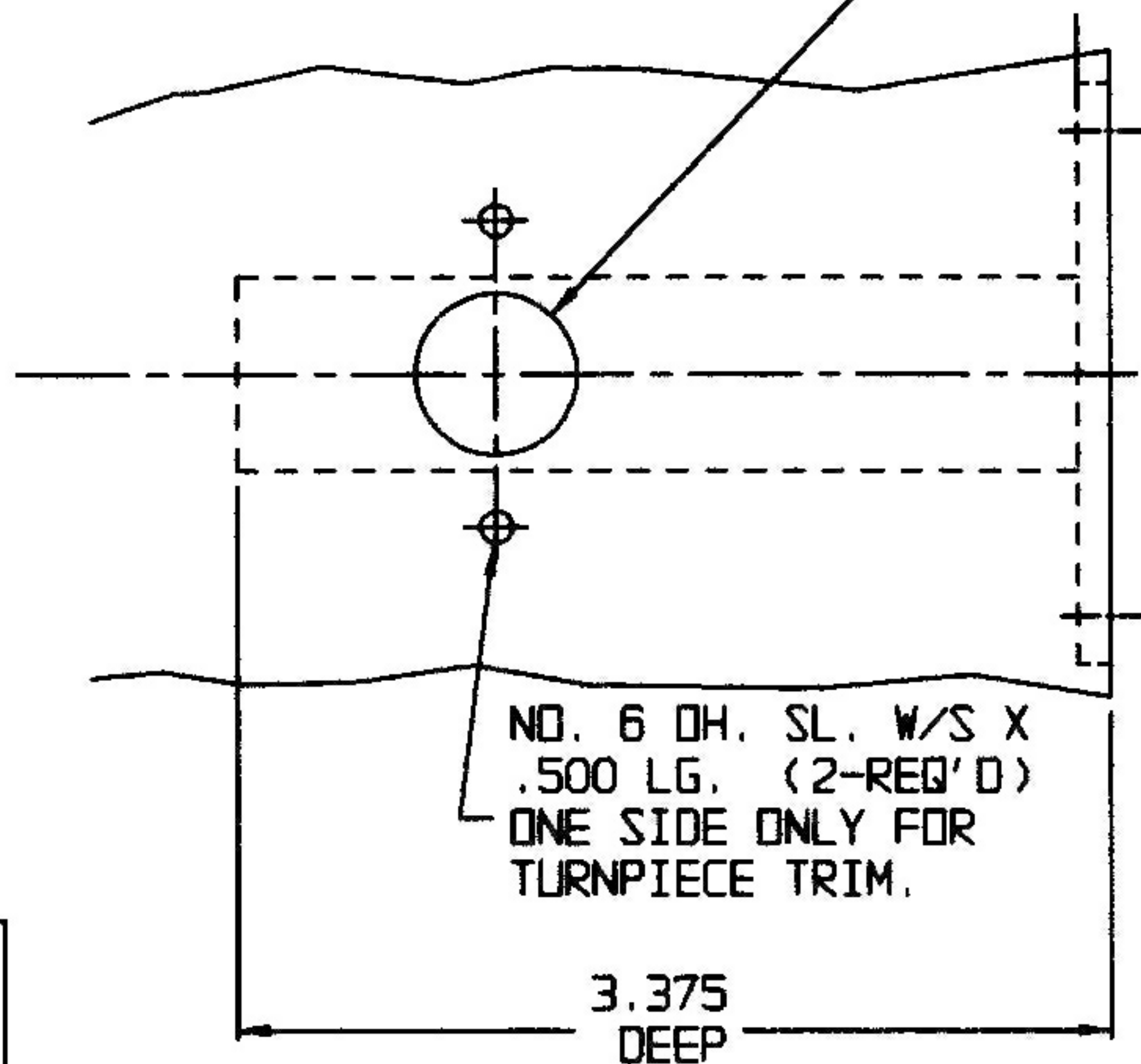


DOOR DETAIL

BOLT DETAIL



DRILL .625 DIA ONE SIDE ONLY FOR TURN PIECE TRIM. DRILL HALFWAY THRU DOOR.

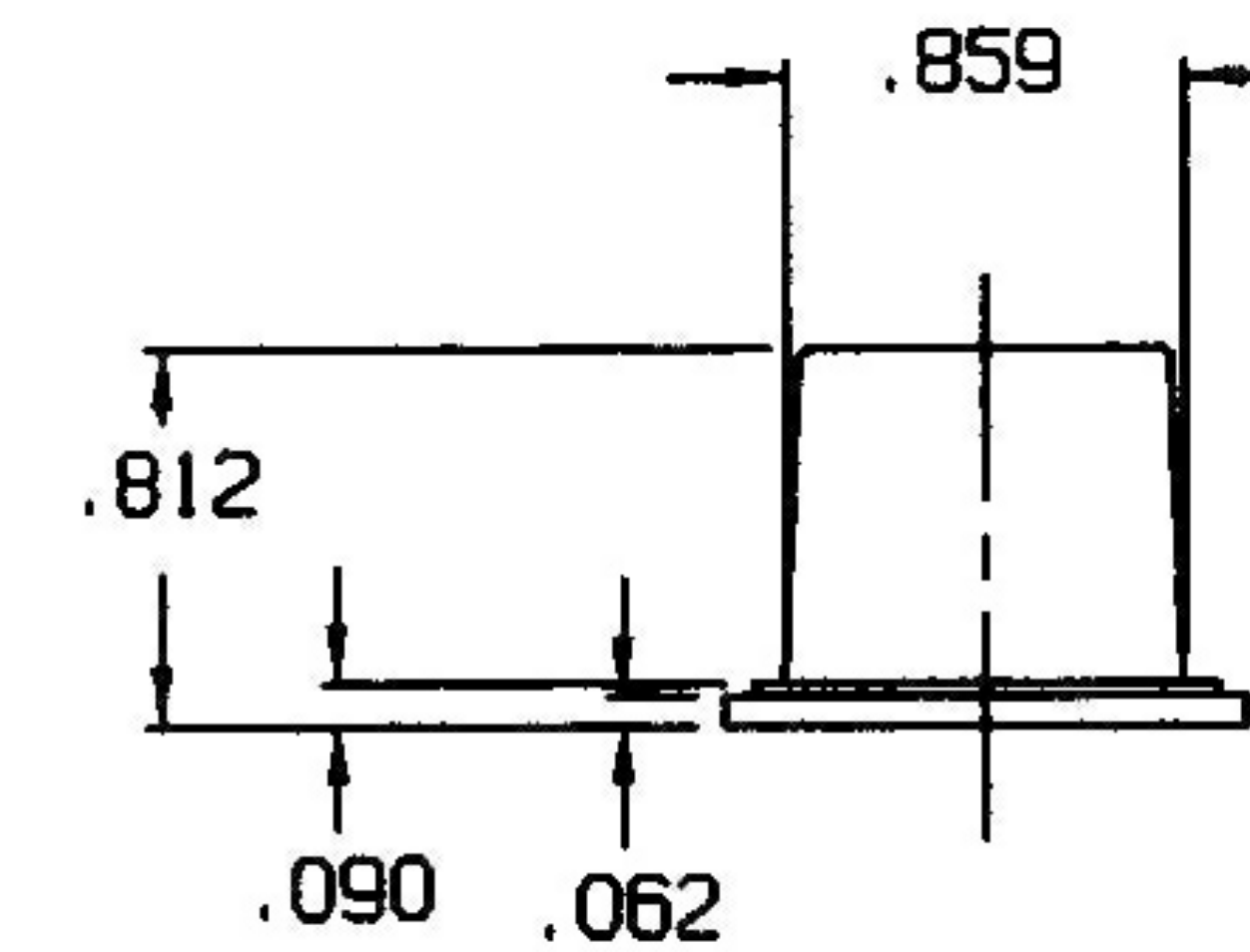
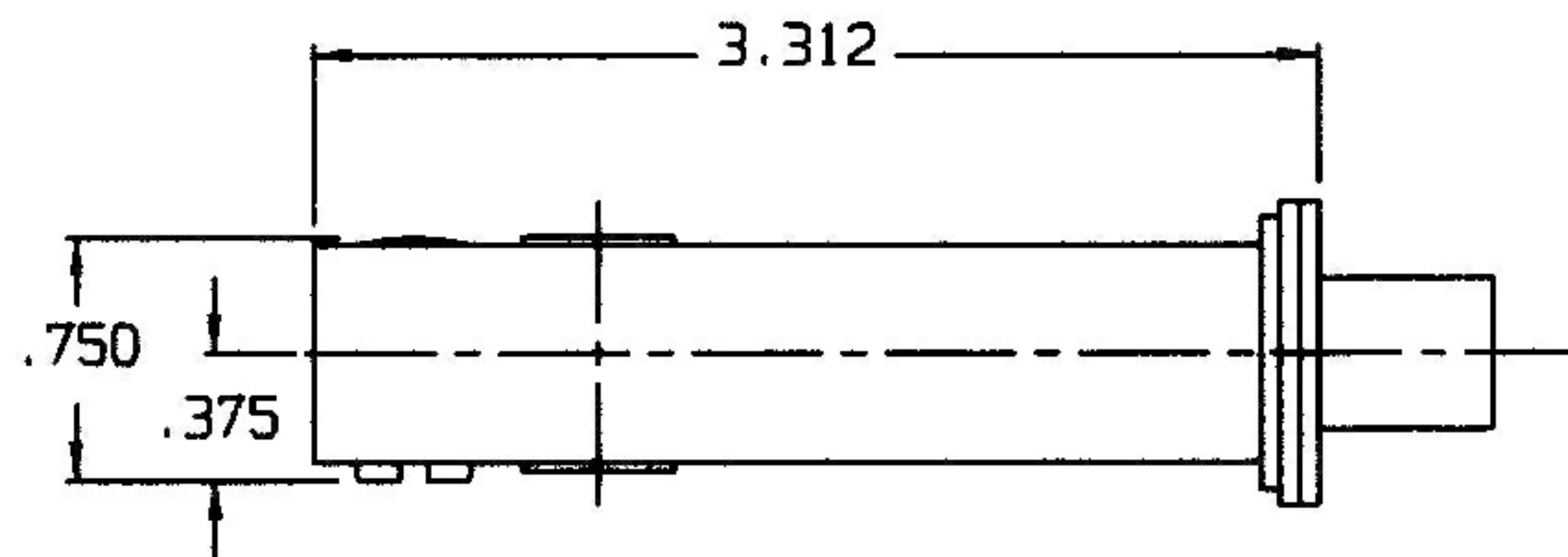


IMPORTANT NOTE:

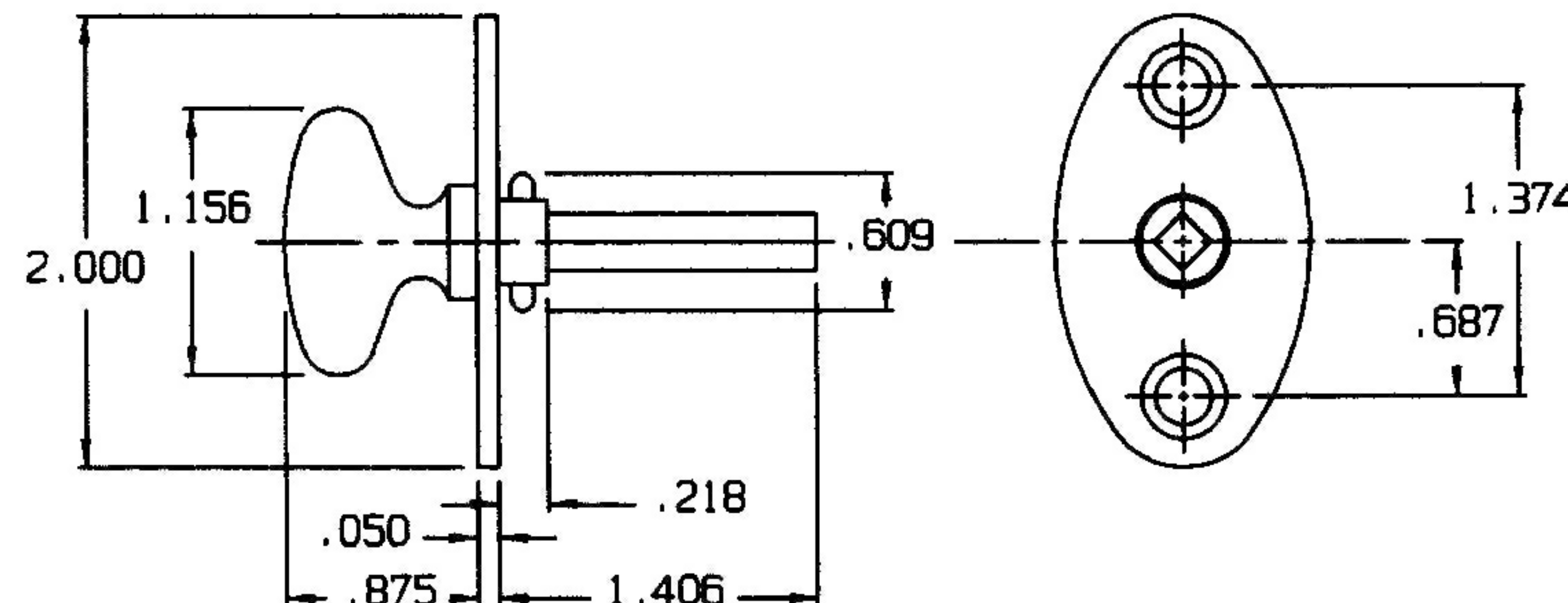
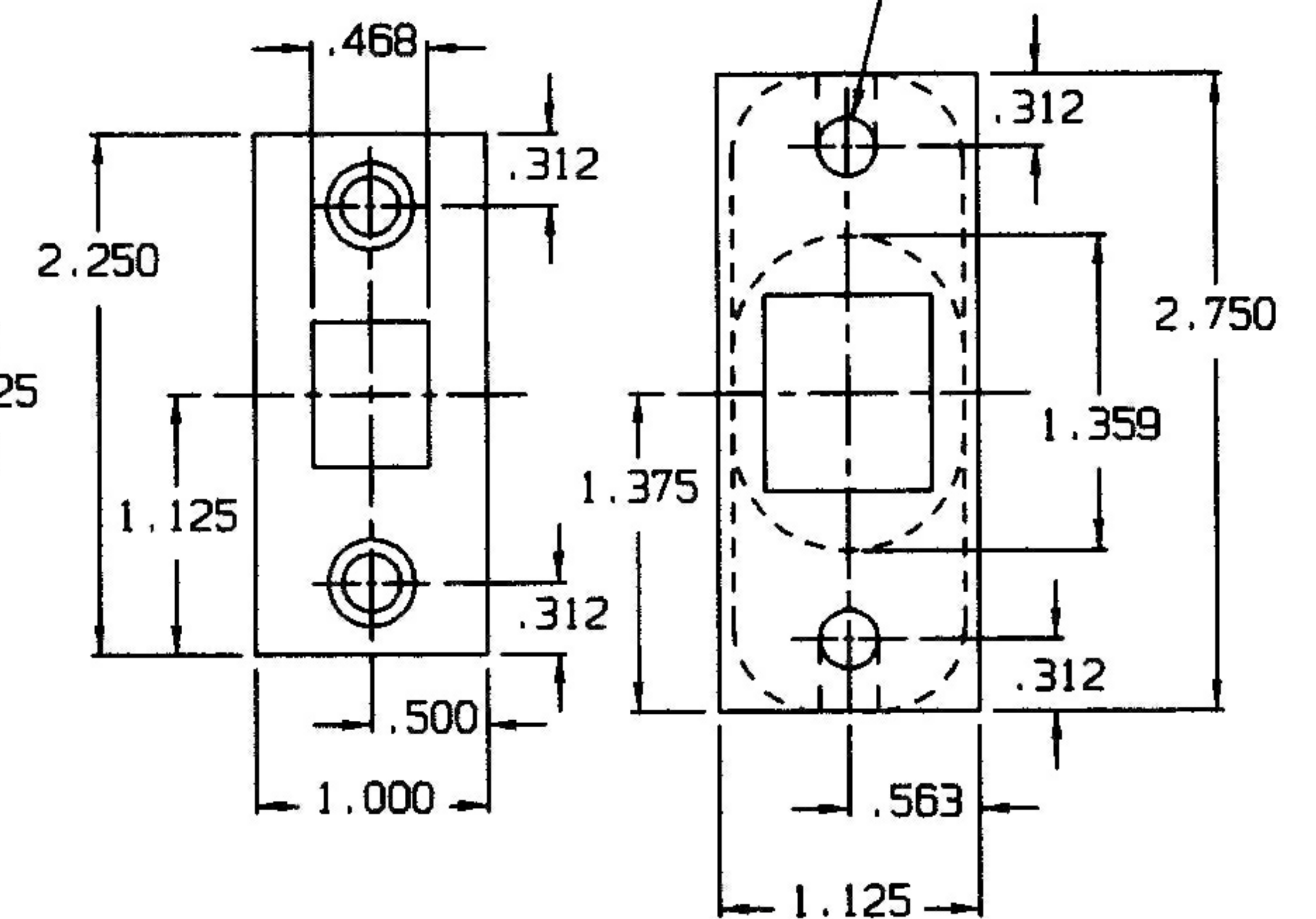
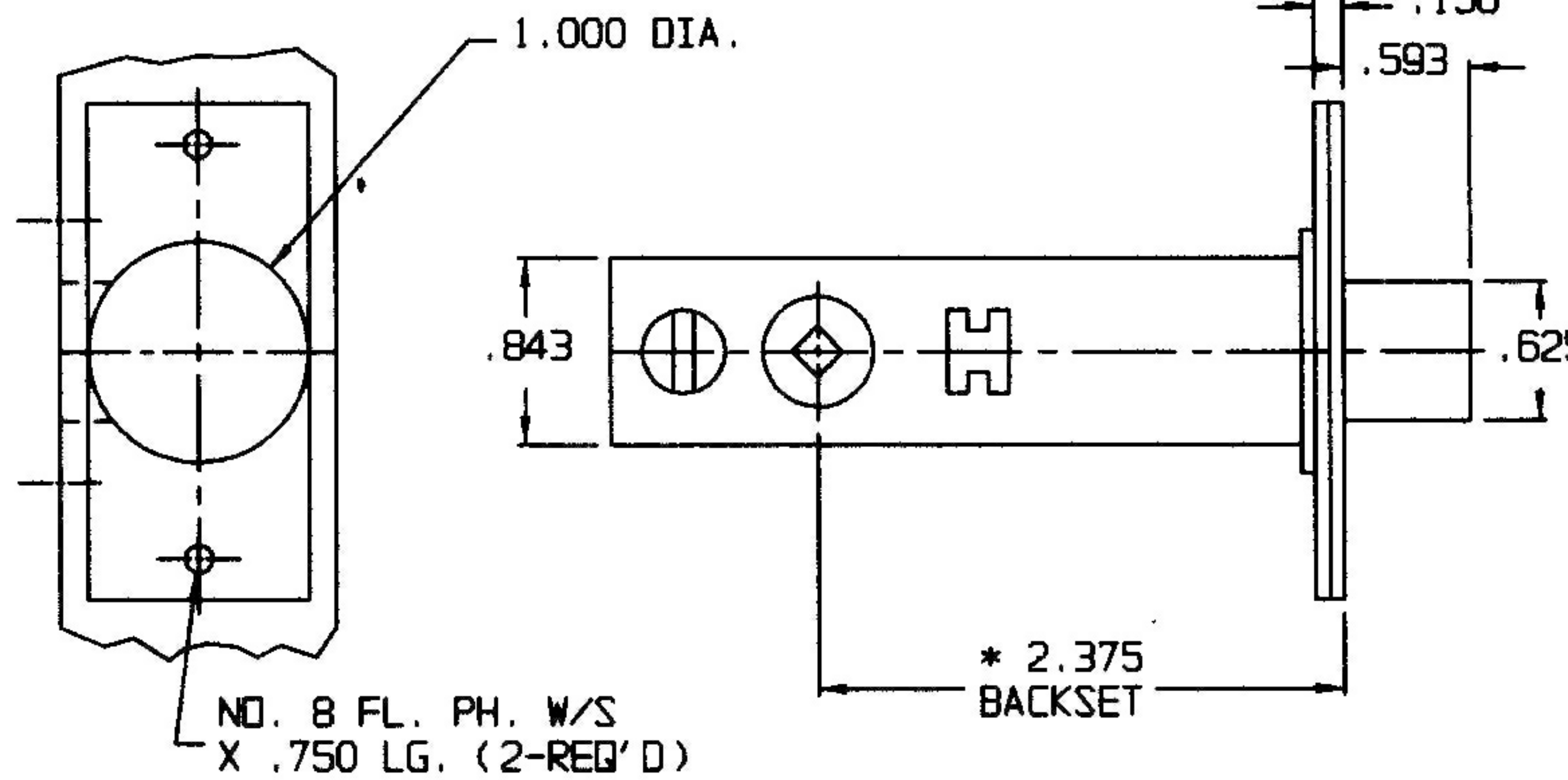
IF EMERGENCY TRIM IS USED, THE TURN PIECE SPINDLE MUST BE CUT TO EXTEND NO FURTHER THAN HALFWAY THRU THE BOLT. REFER TO SPECIFIC EMERGENCY RELEASE TRIM TEMPLATE FOR FURTHER DETAILS.

EFFECTIVE: 2-3-97

* NOTE:
IF INSTALLING ON A BEVELED DOOR
BE CERTAIN TO MEASURE 2.375 BACKSET
FROM THE CENTER OF THE BEVEL.



NO. 8 FL. PH. W/S
X .750 LG. (2-REQ'D)



DO NOT SCALE DRAWING

BALDWIN HARDWARE CORPORATION

0419 MORTISE BOLT

TEMPLATE NO. VARIATIONS

TEMPLATE NO.

© 1988 BY BALDWIN HARDWARE CORPORATION

A177 B