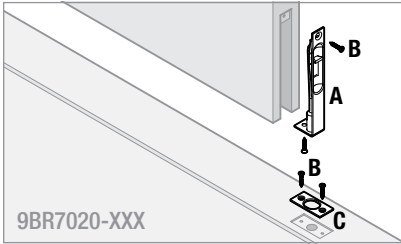


48773 / 01 Flush Bolt



9BR7020-XXX

Tools Needed

Herramientas necesarias
Outils nécessaires



3/32"
2 mm

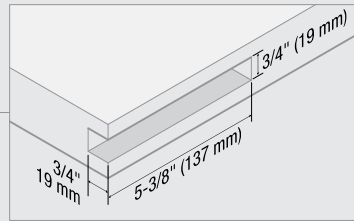
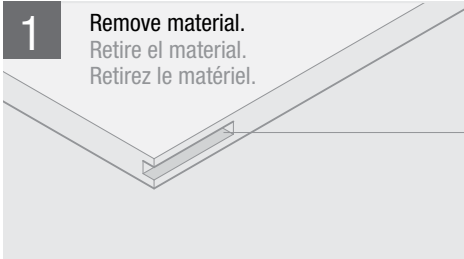


5/8"
16 mm



1

Remove material.
Retire el material.
Retirez le matériel.

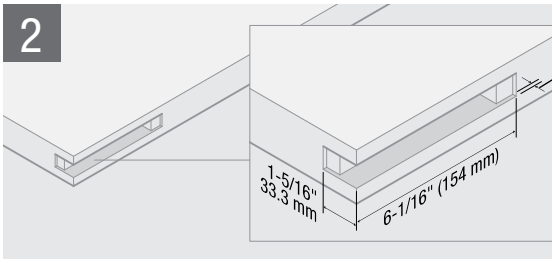


2

Remove material until bolt is flush with door.

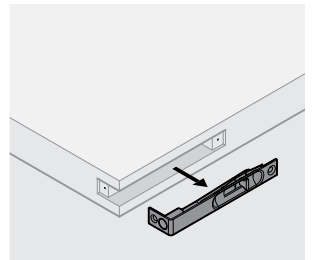
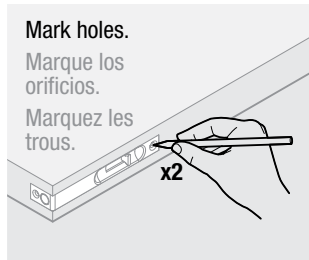
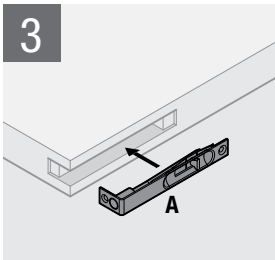
Retire el material hasta que el perno se encuentre nivelado con la puerta.

Retirez le matériel jusqu'à ce que le boulon soit au même niveau que la porte.



3

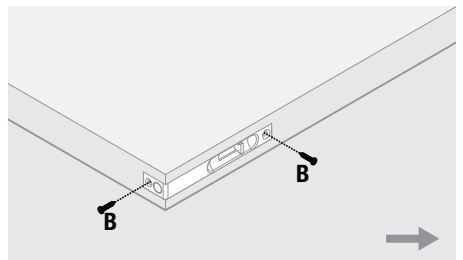
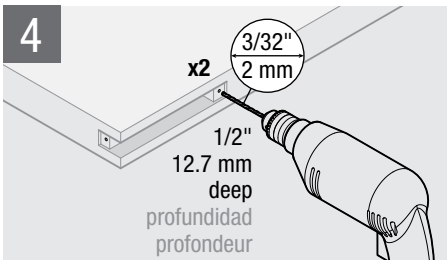
Mark holes.
Marque los orificios.
Marquez les trous.



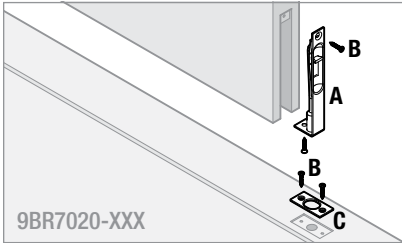
4

x2
3/32"
2 mm

1/2"
12.7 mm
deep
profundidad
profondeur



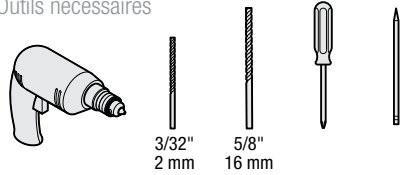
48773 / 01 Flush Bolt



9BR7020-XXX

Tools Needed

Herramientas necesarias
Outils nécessaires



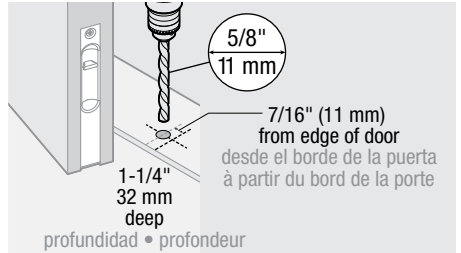
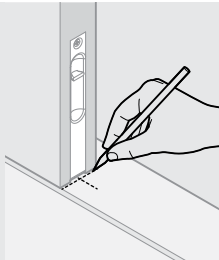
3/32"
2 mm

5/8"
16 mm

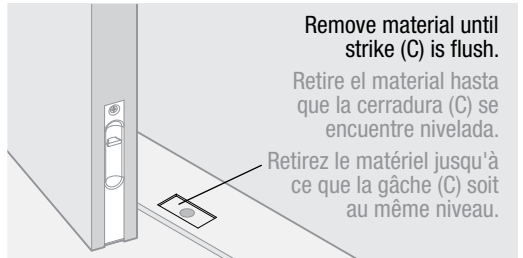
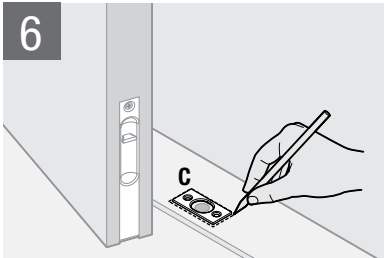
5 Mark edge and center of door.

Marque el costado y el centro de la puerta.

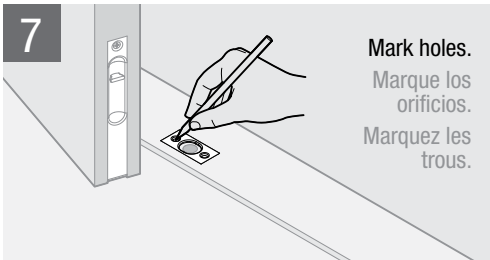
Marquez le bord ainsi que le centre de la porte.



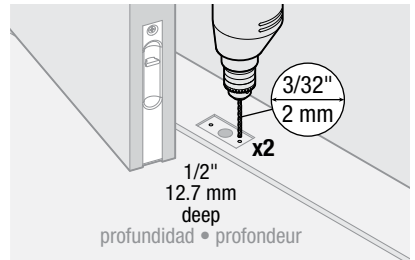
6



7



Mark holes.
Marque los orificios.
Marquez les trous.



8

