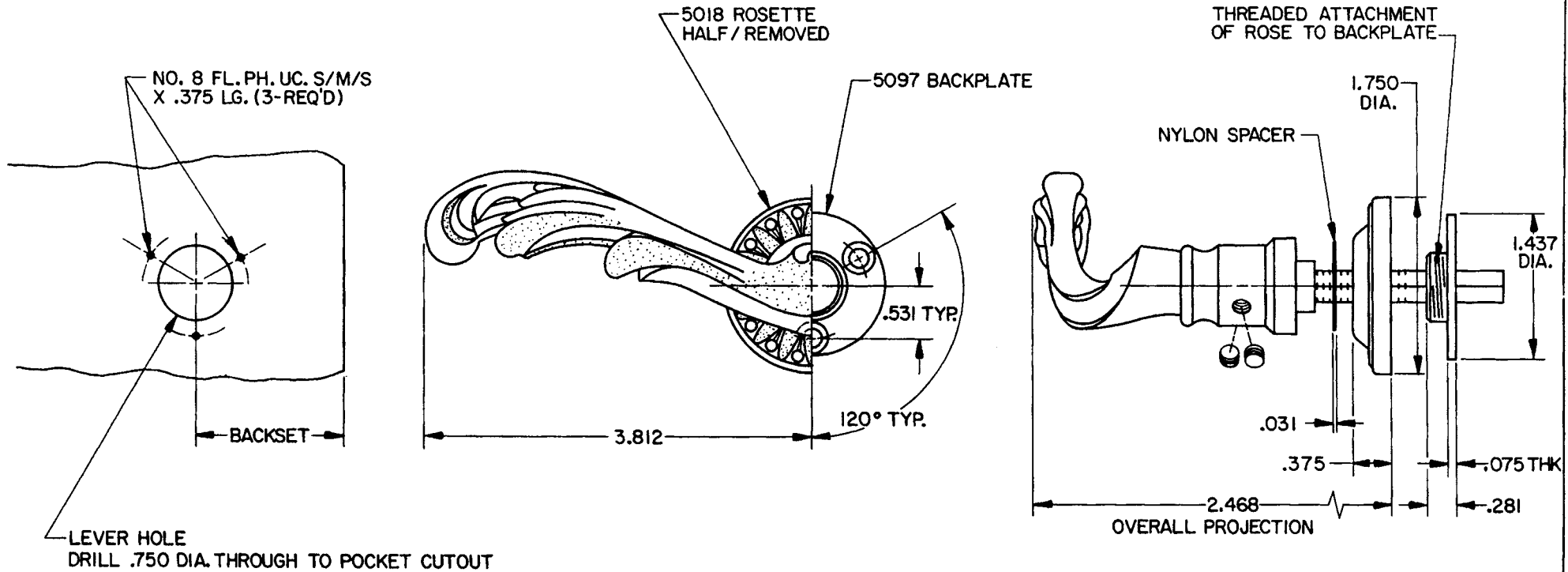


DOOR DETAIL

LEVER DETAIL (LEFT HAND ILLUSTRATED)



NOTE:

- 1.) FOR ADDITIONAL LOCK AND DOOR CUTOUT DIMENSIONS, SEE APPROPRIATE LOCK TEMPLATE.
- 2.) INSTALLATION PLATES ARE NOT REQ'D FOR THIS TRIM.
- 3.) SPECIFY RIGHT OR LEFT HAND. (NOT REVERSIBLE)

EFFECTIVE: 9-1-86 R.A.M.

B. BALDWIN	
5120 LEVER W/ROSETTE	
TEMPLATE NO. VARIATIONS	TEMPLATE NO.
	F103

DO NOT SCALE DRAWING

©1986 by Baldwin Hardware Corporation