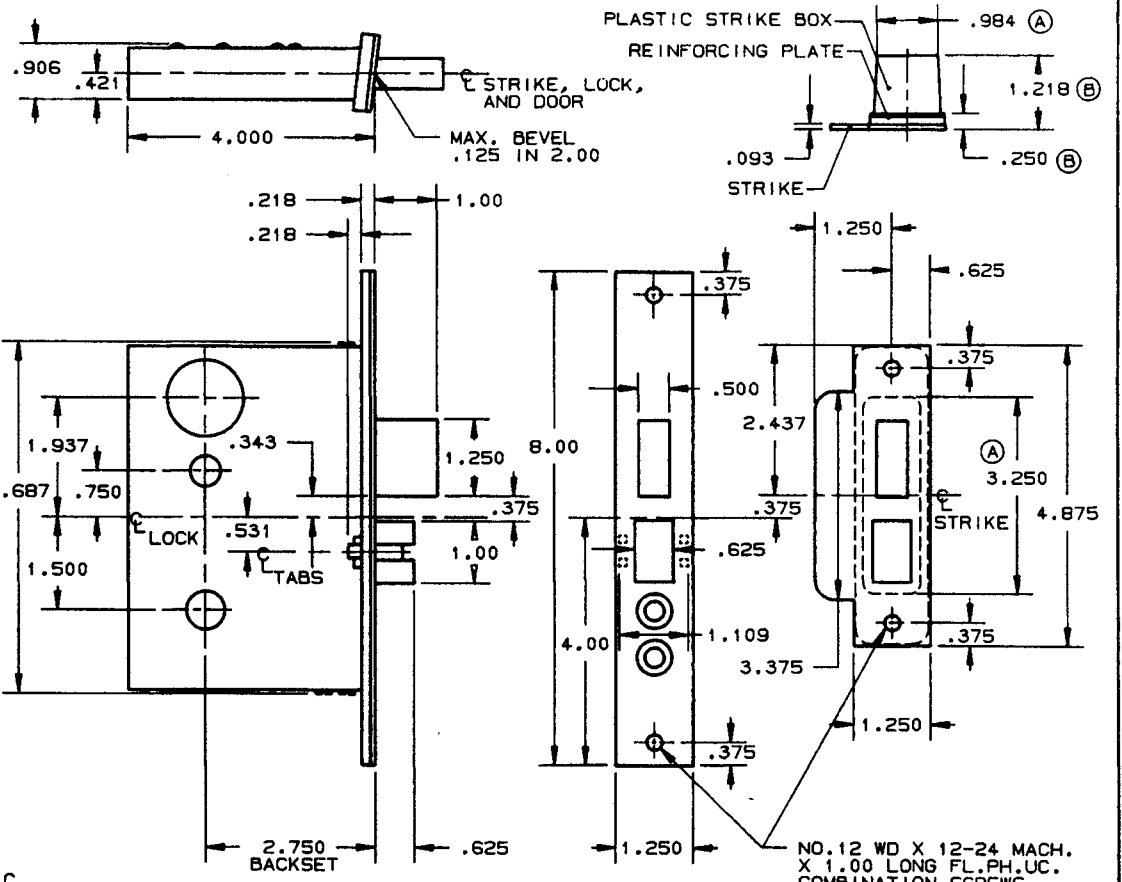
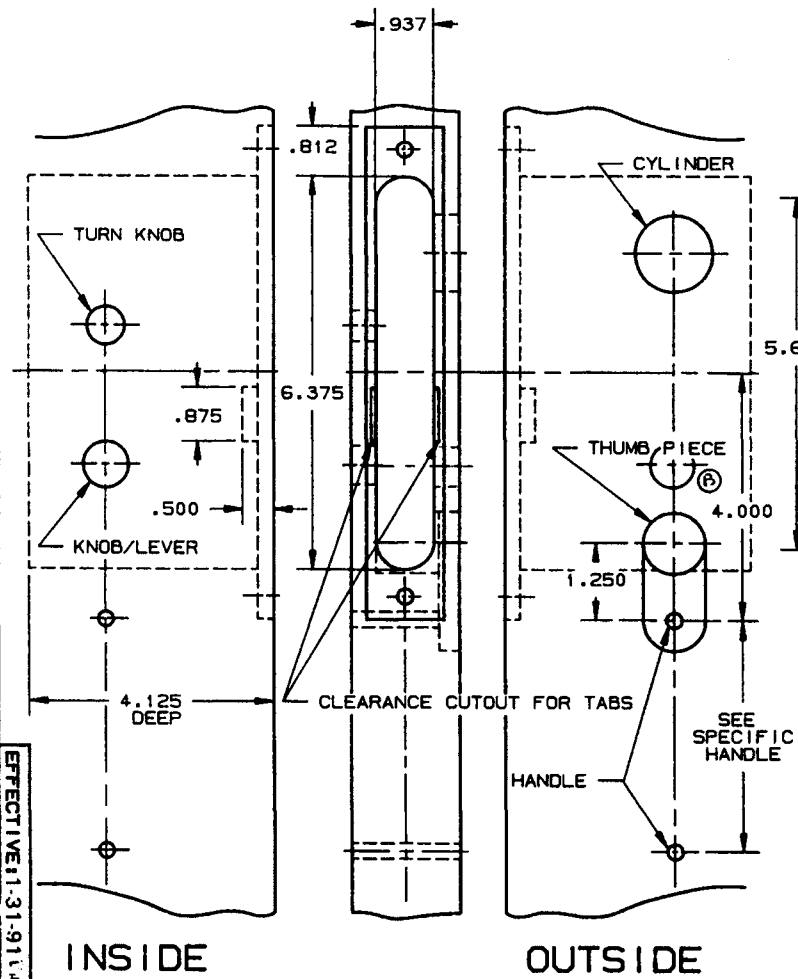


DOOR DETAIL

LOCK DETAIL



- NOTE:
- 1.) SEE SPECIFIC TRIM TEMPLATE FOR ADDITIONAL DOOR CUTOUT DETAILS.
 - 2.) DISCARD REINFORCING PLATE WHEN INSTALLING ON METAL DOORS & JAMBS.

DO NOT SCALE DRAWING

BALDWIN	
6021 AND 6021-LS LOCK	
TEMPLATE NO. VARIATIONS	TEMPLATE NO.
	H005-B

EFFECTIVE 11-31-91