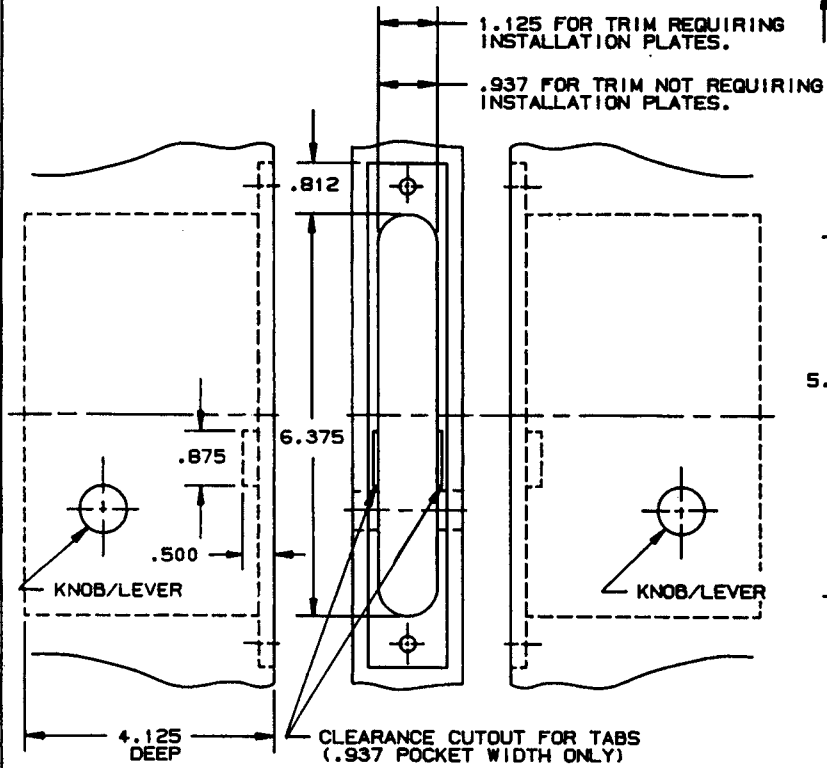
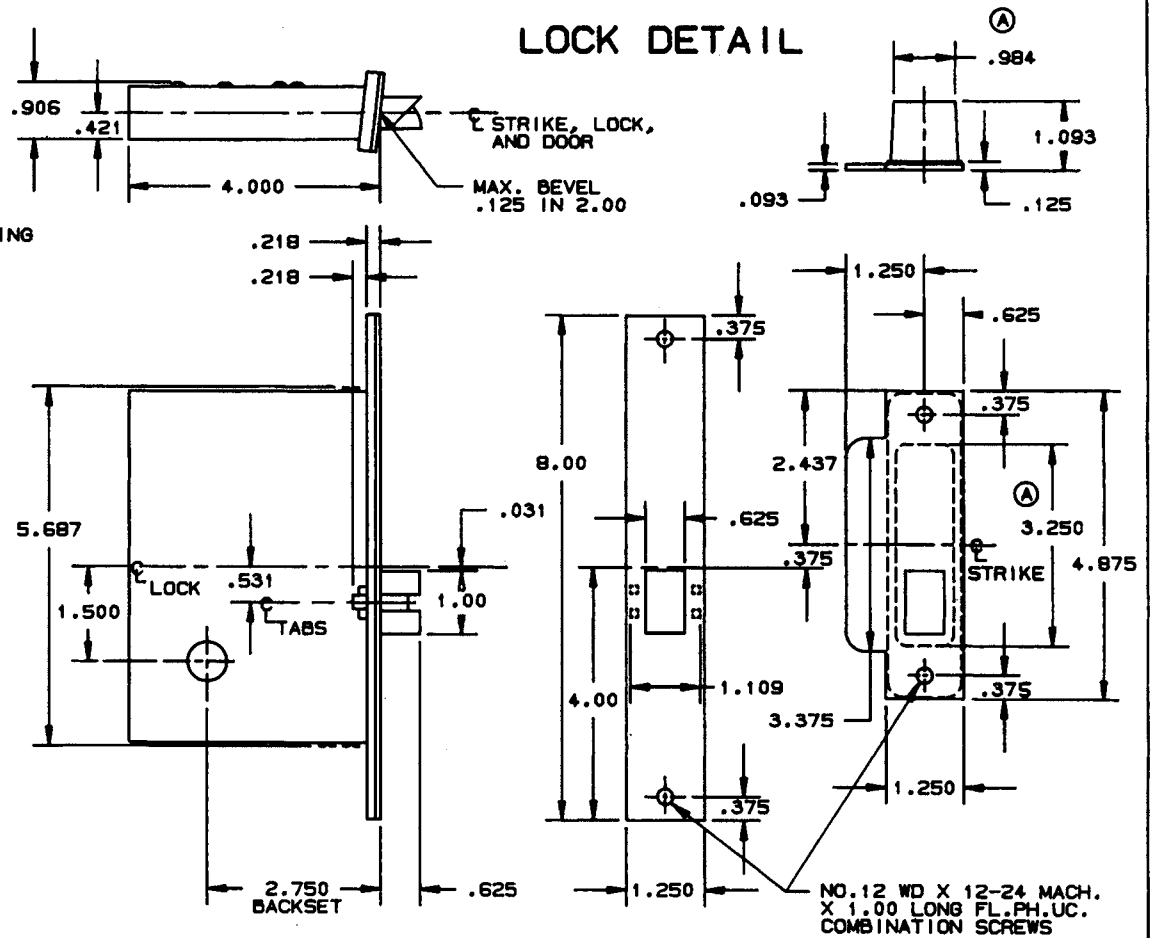


DOOR DETAIL



LOCK DETAIL



EFFECTIVE: 2-1-90 R.A.A.

INSIDE

OUTSIDE

NOTE:
 1.) SEE SPECIFIC TRIM TEMPLATE FOR ADDITIONAL DOOR CUTOUT DETAILS.

BALDWIN	
6110 AND 6110-LS LOCK	
TEMPLATE NO. VARIATIONS	TEMPLATE NO.
	H091-A

SUITABLE REINFORCEMENT BY OTHERS MAY BE REQUIRED FOR METAL AND COMPOSITE CORE DOOR INSTALLATION.

DO NOT SCALE DRAWING

©1990 by Baldwin Hardware Corporation