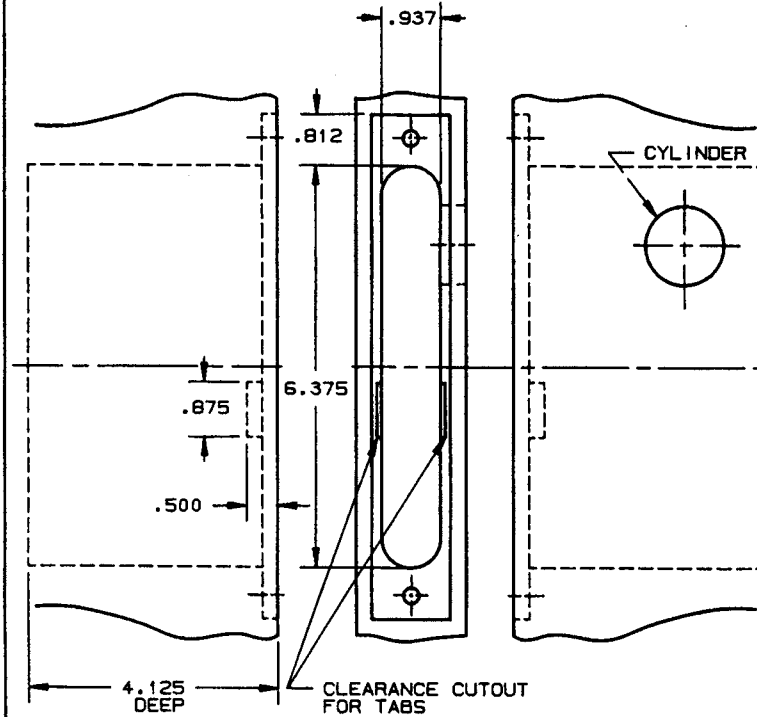
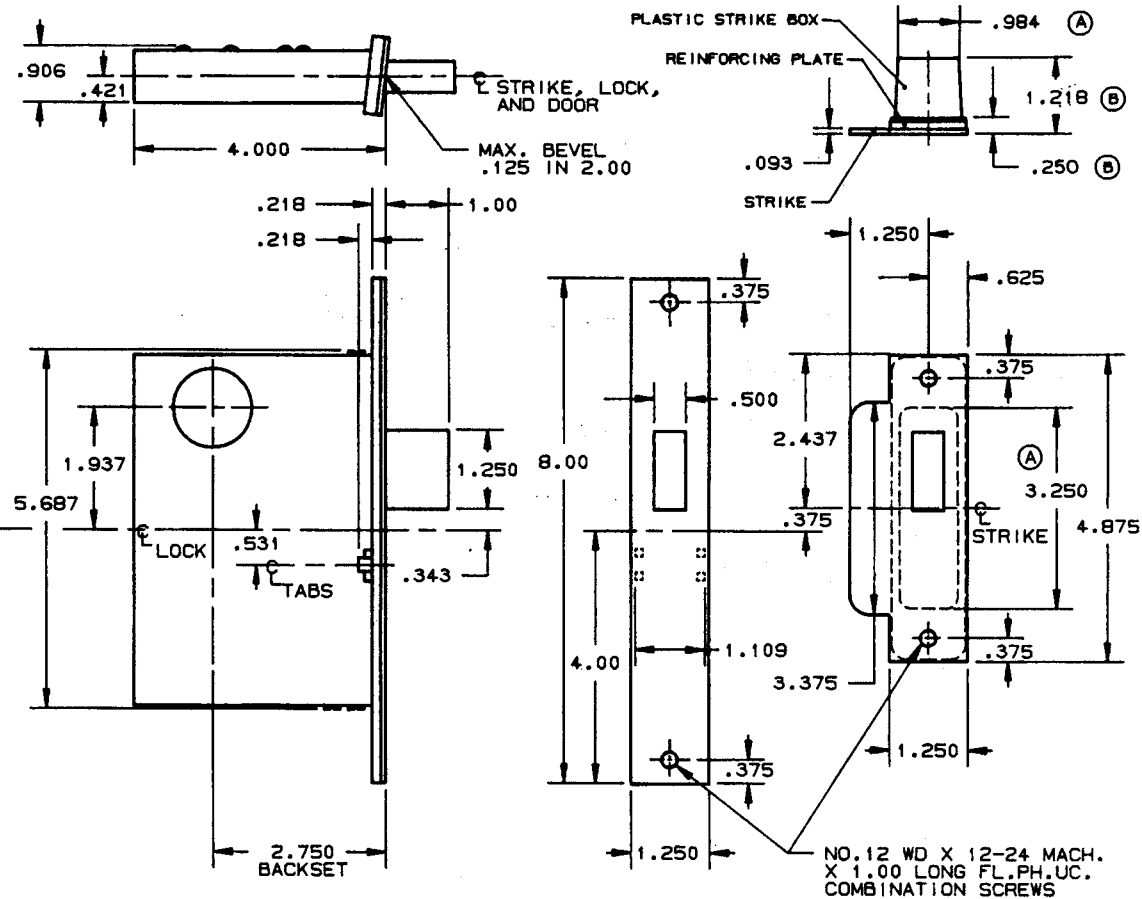


DOOR DETAIL



LOCK DETAIL



INSIDE

OUTSIDE

- NOTE:
- 1.) SEE SPECIFIC TRIM TEMPLATE FOR ADDITIONAL DOOR CUTOUT DETAILS.
 - 2.) DISCARD REINFORCING PLATE WHEN INSTALLING ON METAL DOORS & JAMBS.

SUITABLE REINFORCEMENT BY OTHERS MAY BE REQUIRED FOR METAL AND COMPOSITE CORE DOOR INSTALLATION.

DO NOT SCALE DRAWING

BALDWIN	
6150 DEADLOCK	
TEMPLATE NO. VARIATIONS	TEMPLATE NO.
	H105-B