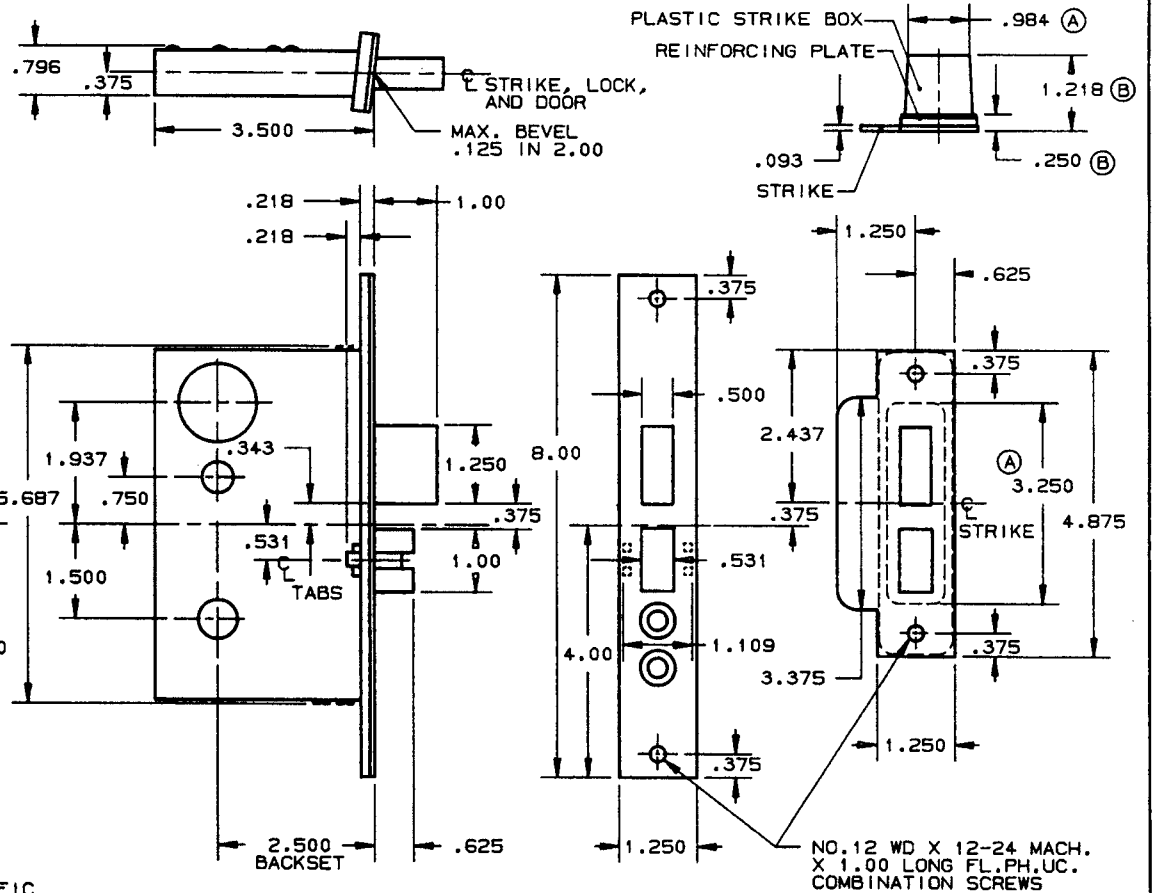
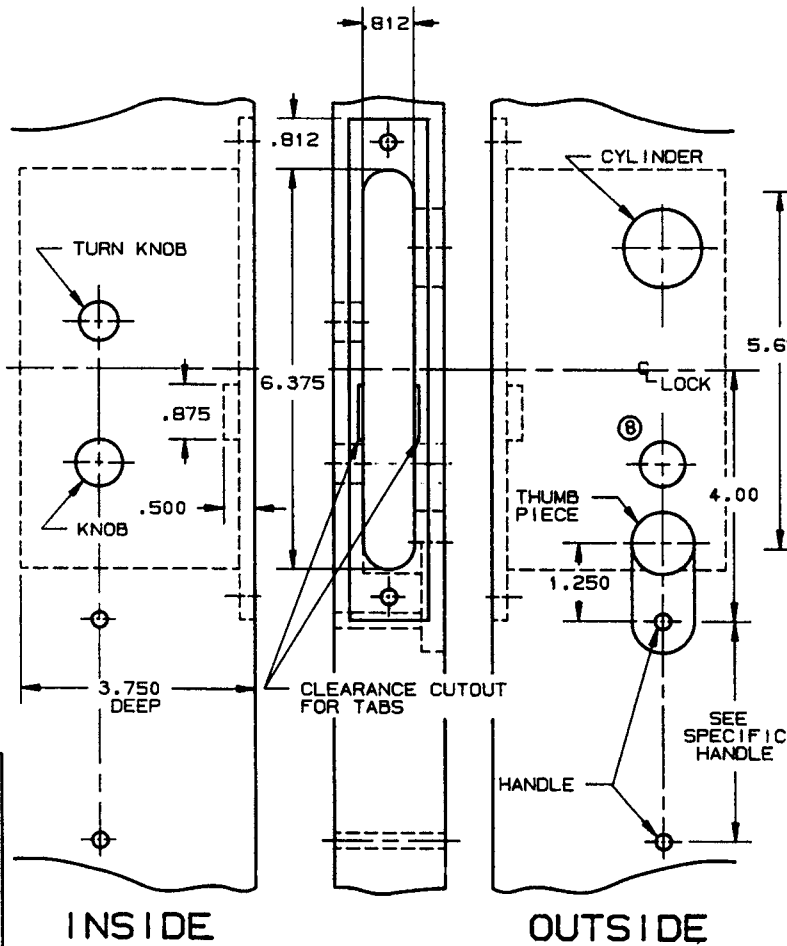


# DOOR DETAIL

# LOCK DETAIL



- NOTE:
- 1.) SEE SPECIFIC TRIM TEMPLATE FOR ADDITIONAL DOOR CUTOUT DETAILS.
  - 2.) DISCARD REINFORCING PLATE WHEN INSTALLING ON METAL DOORS & JAMBS.

DO NOT SCALE DRAWING

|                              |               |
|------------------------------|---------------|
| <b>B. BALDWIN</b>            |               |
| <b>6321 AND 6321 LS LOCK</b> |               |
| TEMPLATE NO. VARIATIONS      | TEMPLATE NO.  |
|                              | <b>H161-B</b> |