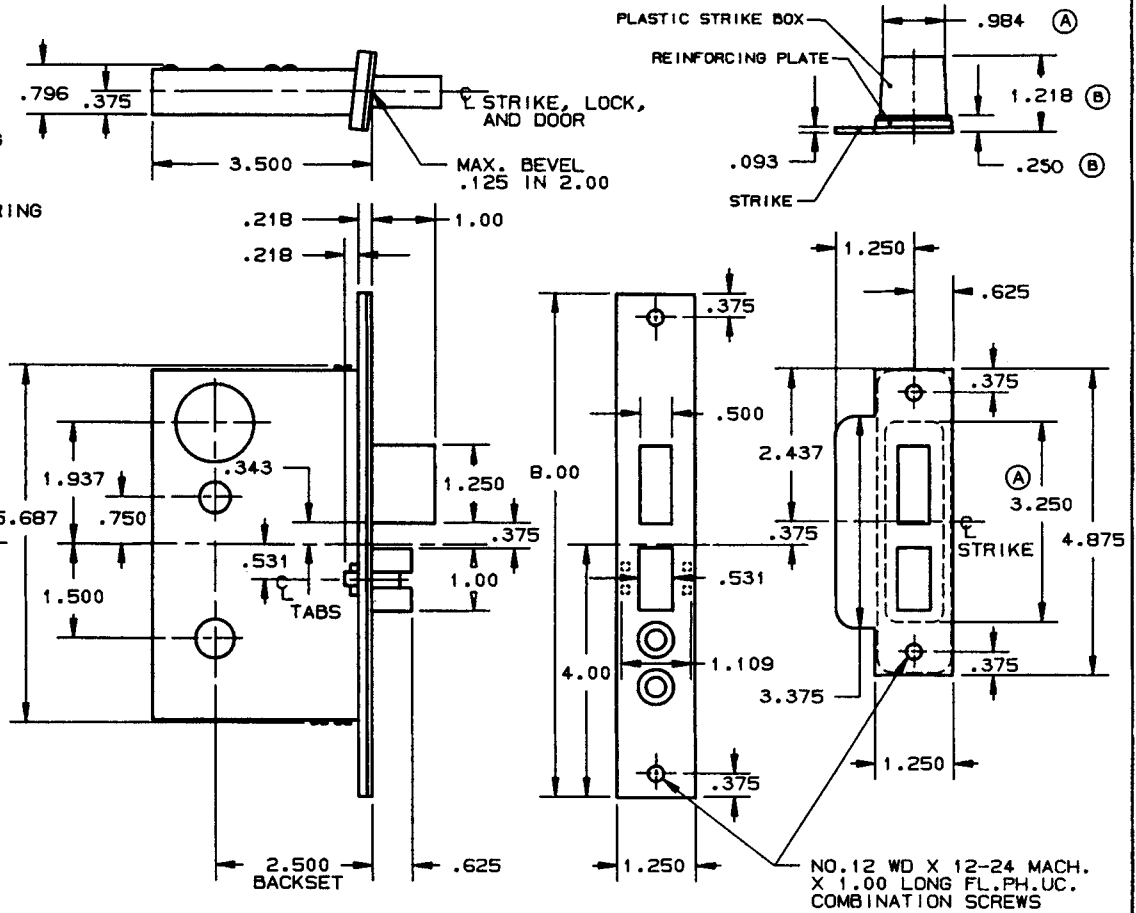
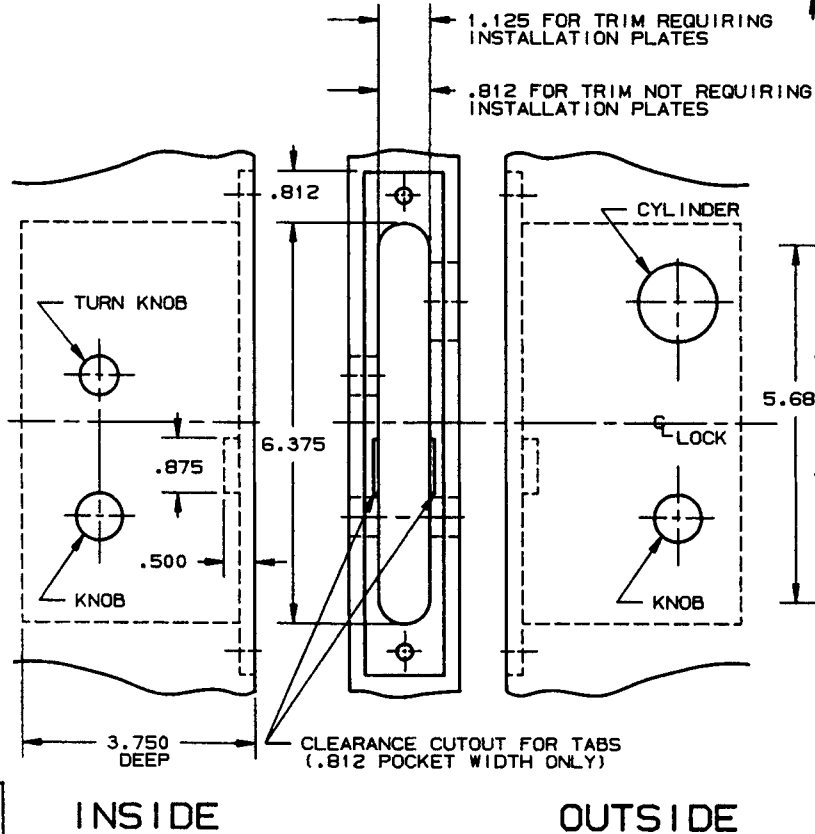


DOOR DETAIL

LOCK DETAIL



EFFECTIVE 11-31-91

SUITABLE REINFORCEMENT BY OTHERS MAY BE REQUIRED FOR METAL AND COMPOSITE CORE DOOR INSTALLATION.

- NOTE:
- SEE SPECIFIC TRIM TEMPLATE FOR ADDITIONAL DOOR CUTOUT DETAILS.
 - DISCARD REINFORCING PLATE WHEN INSTALLING ON METAL DOORS & JAMBS.

DO NOT SCALE DRAWING

BALDWIN	
6375 AND 6375 LS LOCK	
TEMPLATE NO. VARIATIONS	TEMPLATE NO.
	H195-B