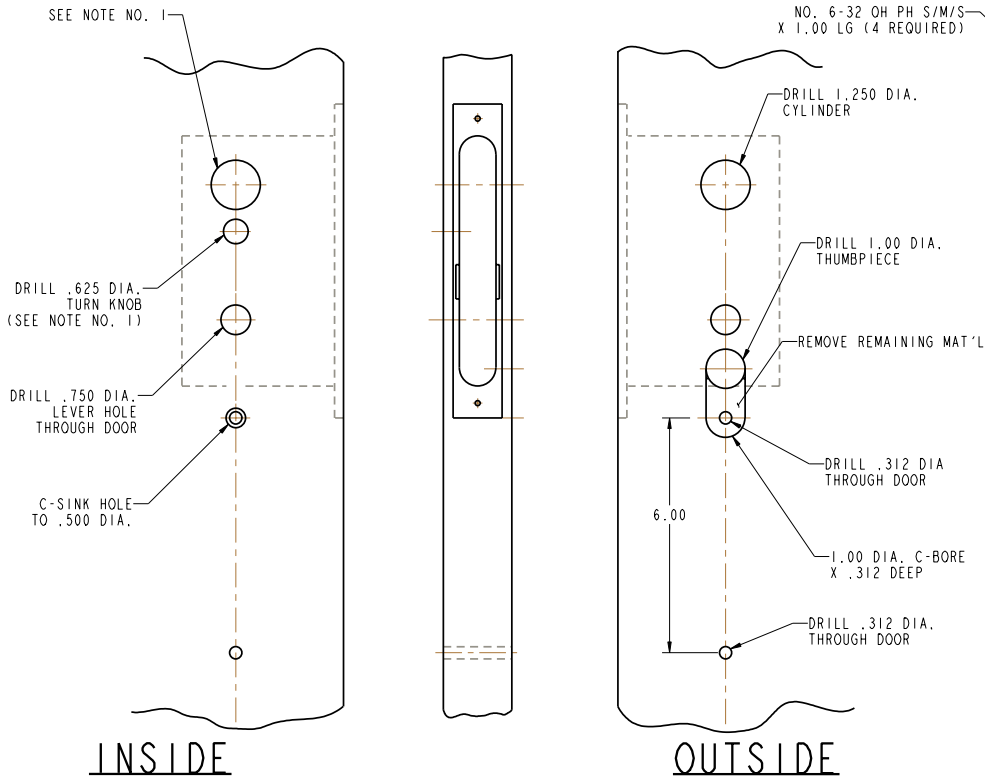
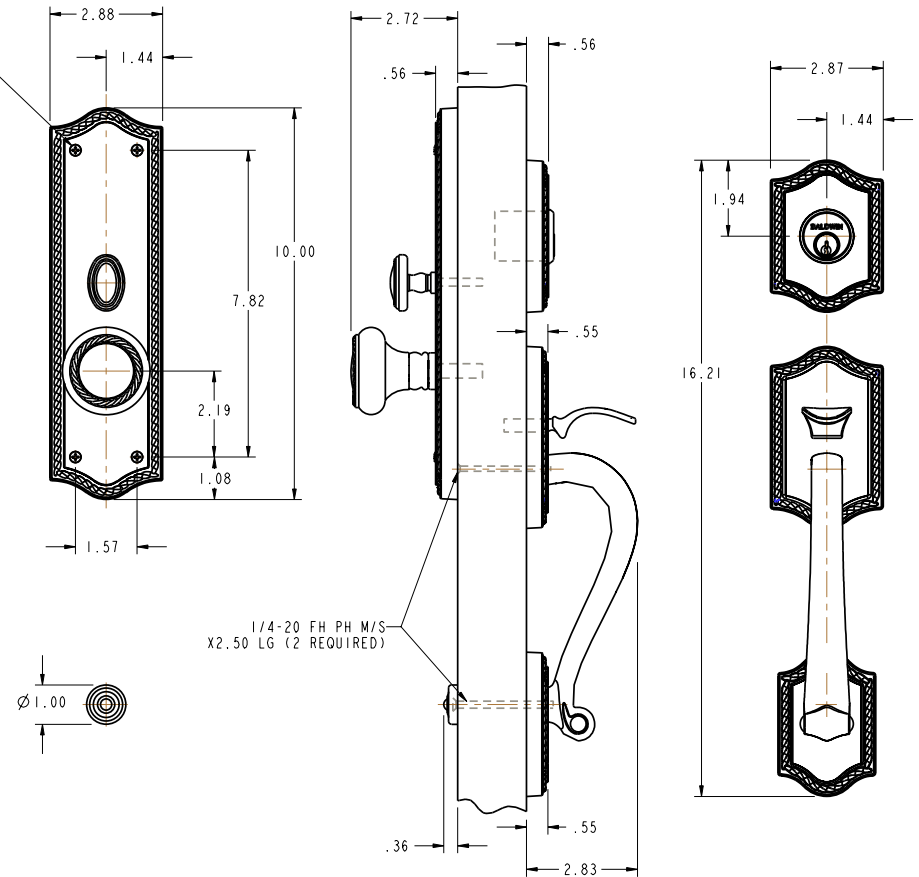


DOOR DETAIL



TRIM DETAIL



NOTE:

- 1) WHEN PREPARING DOOR FOR ^LR ^RDBL FUNCTION, OMIT DRILLING OF Ø.625 TURN KNOB HOLE (INSIDE). DRILL A Ø1.250 CYLINDER HOLE INSTEAD, USING SAME CENTER LINE AS OUTSIDE CYLINDER HOLE.
- 2) FOR ADDITIONAL LOCK AND DOOR CUTOUT DIMENSIONS, SEE APPROPRIATE LOCK TEMPLATE.
- 3) DRILL ALL HOLES HALFWAY THROUGH DOOR UNLESS OTHERWISE SPECIFIED.
- 4) INSTALLATION PLATES ARE NOT REQUIRED FOR THIS TRIM

DO NOT SCALE DRAWING

	BALDWIN HARDWARE CORPORATION <small>READING, PENNSYLVANIA</small>	BLACK & DECKER COMPANY
	6520 BRISTOL	
TEMPLATE: NO VARIATIONS		TEMPLATE NO.
©2006 BY BALDWIN HARDWARE CORPORATION		I-520

EFFECTIVE 2/7/07