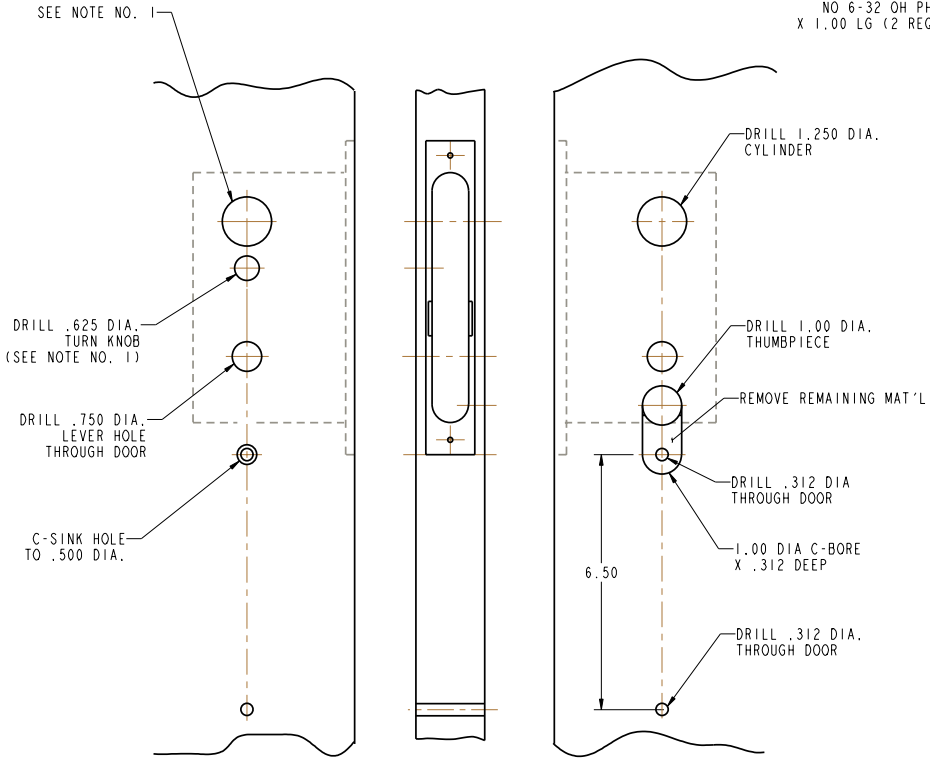


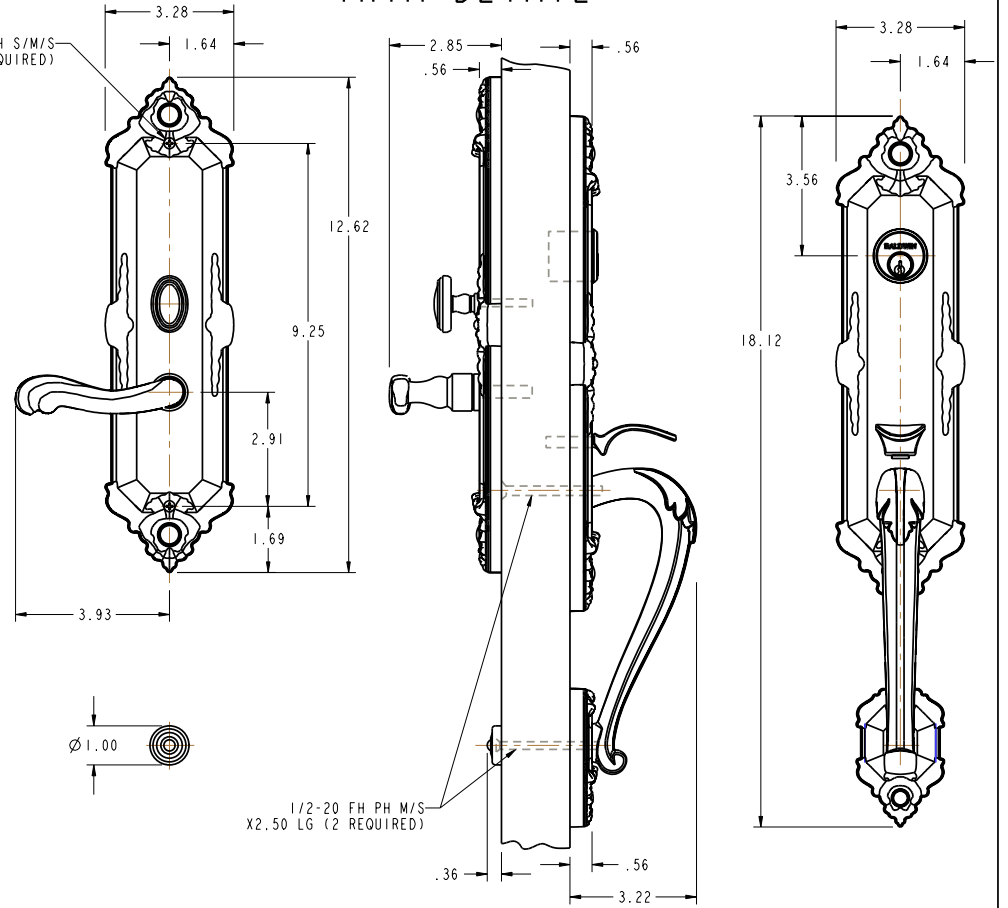
DOOR DETAIL



INSIDE

OUTSIDE

TRIM DETAIL



- NOTE:
- 1) WHEN PREPARING DOOR FOR $\frac{L}{R}$ DBL FUNCTION, OMIT DRILLING OF $\varnothing .625$ TURN KNOB HOLE (INSIDE). DRILL A $\varnothing 1.250$ CYLINDER HOLE INSTEAD, USING SAME CENTER LINE AS OUTSIDE CYLINDER HOLE.
 - 2) FOR ADDITIONAL LOCK AND DOOR CUTOUT DIMENSIONS, SEE APPROPRIATE LOCK TEMPLATE.
 - 3) DRILL ALL HOLES HALF WAY THROUGH DOOR UNLESS OTHERWISE SPECIFIED.
 - 4) INSTALLATION PLATES ARE NOT REQUIRED FOR THIS TRIM.

DO NOT SCALE DRAWING

	BALDWIN HARDWARE CORPORATION READING, PENNSYLVANIA	BLACK & DECKER COMPANY
	6526 KENSINGTON	
TEMPLATE: NO VARIATIONS		TEMPLATE NO.
© 2006 BY BALDWIN HARDWARE CORPORATION		I-526

EFFECTIVE 2/08/07