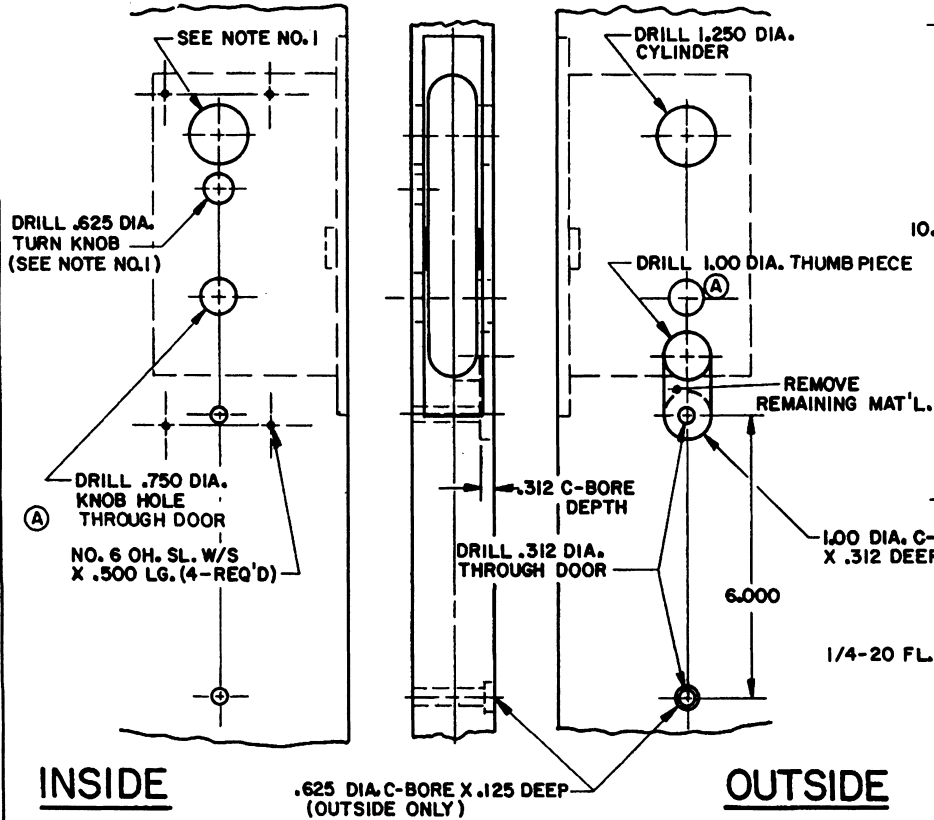
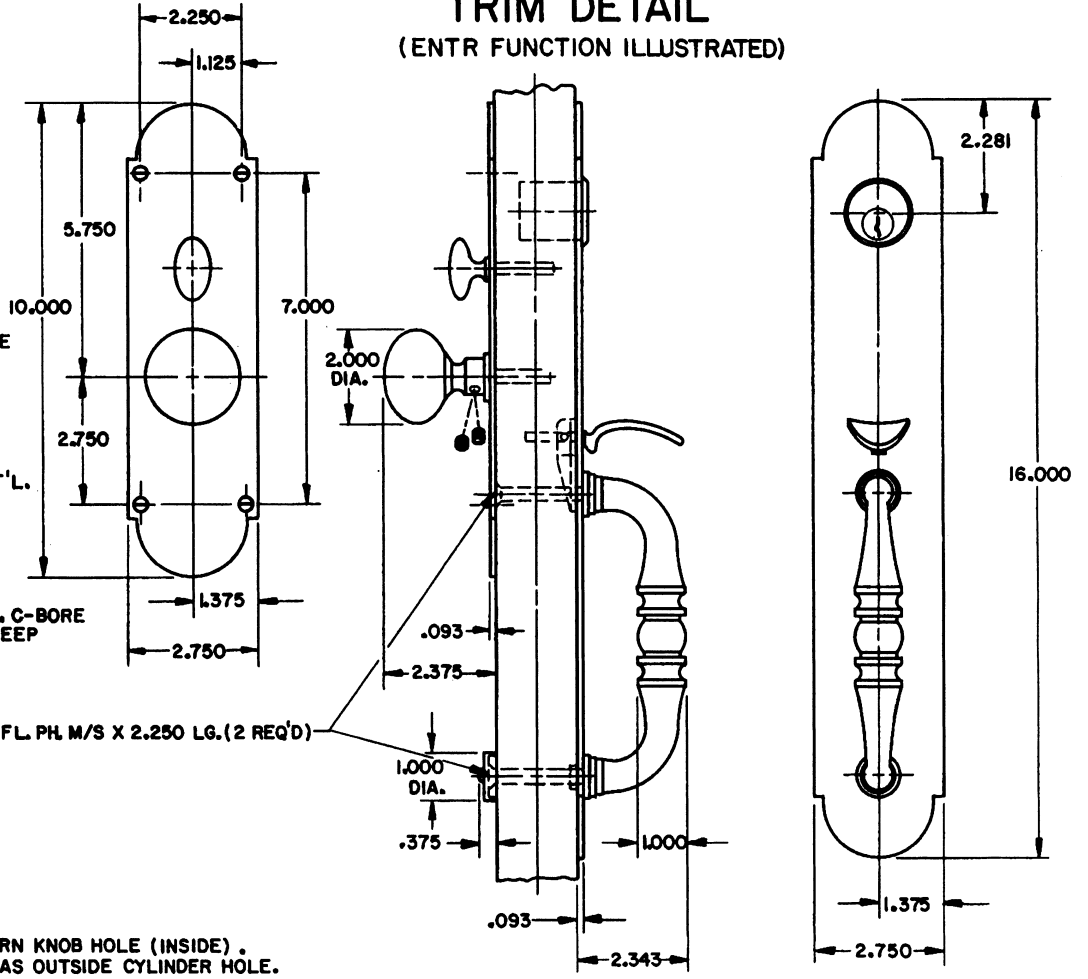


DOOR DETAIL



TRIM DETAIL (ENTR FUNCTION ILLUSTRATED)



- NOTE:
- 1.) WHEN PREPARING DOOR FOR DBLC FUNCTION, OMIT DRILLING OF .625 DIA. TURN KNOB HOLE (INSIDE). DRILL A 1.250 DIA. CYLINDER HOLE INSTEAD, USING SAME CENTER LINE AS OUTSIDE CYLINDER HOLE.
 - 2.) DRILL ALL HOLES HALFWAY THROUGH DOOR UNLESS OTHERWISE SPECIFIED.
 - 3.) FOR ADDITIONAL LOCK AND DOOR CUTOUT DIMENSIONS, SEE APPROPRIATE LOCK TEMPLATE.
 - 4.) INSTALLATION PLATES ARE NOT REQUIRED FOR THIS TRIM.

EFFECTIVE: 1-31-91 R.A.S.

BALDWIN	
6543 LANCASTER TRIM	
TEMPLATE NO. VARIATIONS	TEMPLATE NO.
	I543-A

DO NOT SCALE DRAWING

© 1990 by Baldwin Hardware Corporation