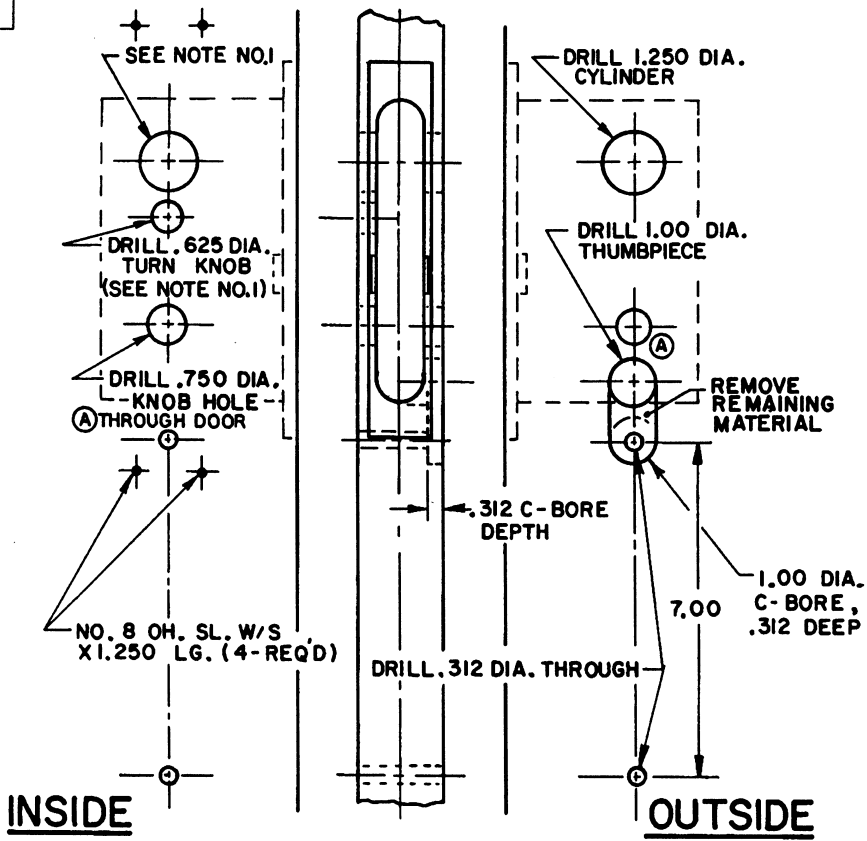
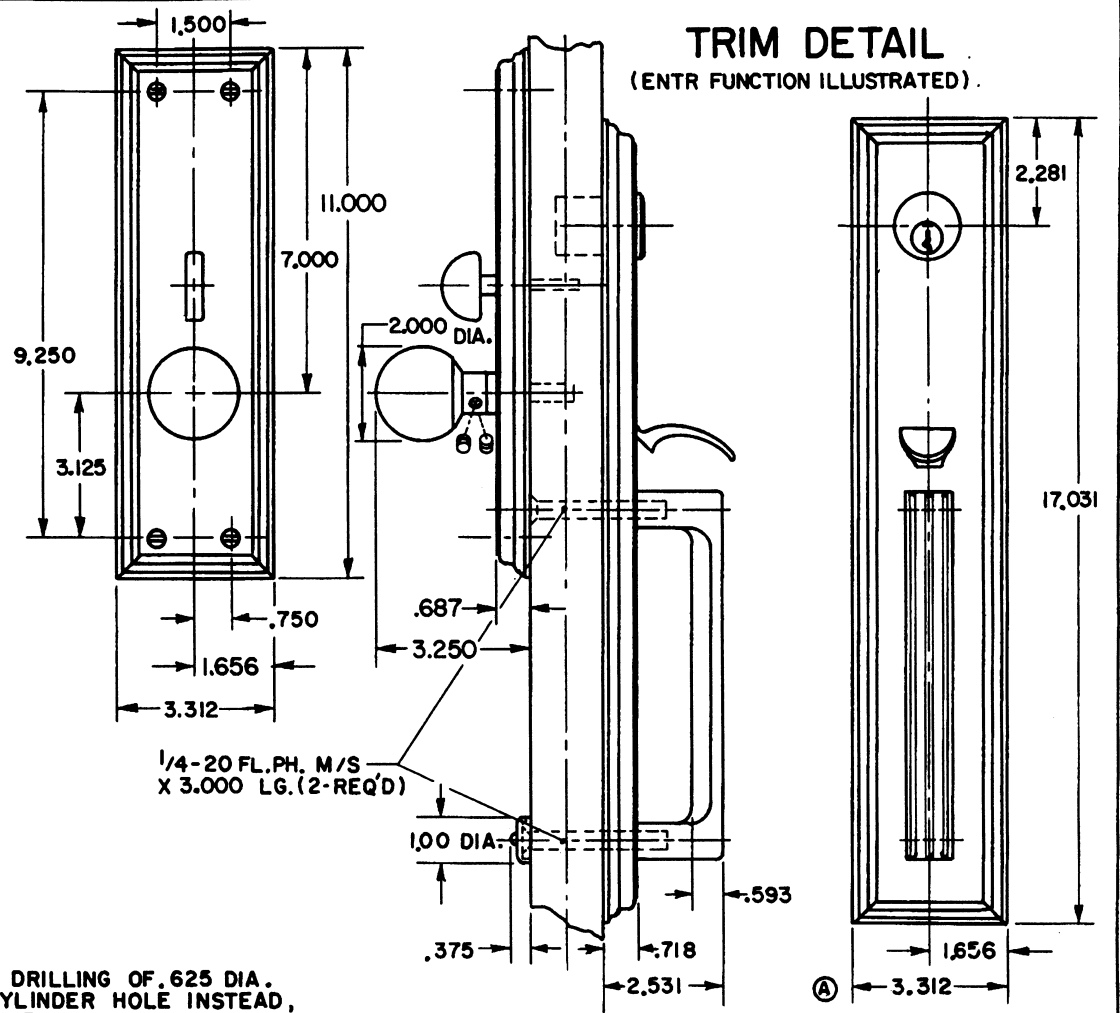


DOOR DETAIL



TRIM DETAIL

(ENTR FUNCTION ILLUSTRATED)



NOTE:

- 1) WHEN PREPARING DOOR FOR DBLC FUNCTION, OMIT DRILLING OF .625 DIA. TURN KNOB HOLE (INSIDE). DRILL A 1.250 DIA. CYLINDER HOLE INSTEAD, USING SAME CENTER LINE AS OUTSIDE CYLINDER HOLE.
- 2) DRILL ALL HOLES HALF WAY THROUGH DOOR.
- 3) FOR ADDITIONAL LOCK AND DOOR CUT OUT DIMENSIONS, SEE APPROPRIATE LOCK TEMPLATE.
- 4) INSTALLATION PLATES ARE NOT REQUIRED FOR THIS TRIM.

EFFECTIVE 1-31-91 R. Adams

B. BALDWIN	
6545 EMPIRE TRIM	
TEMPLATE NO. VARIATIONS	TEMPLATE NO.
	I545A

DO NOT SCALE DRAWING

© 1990 by Baldwin Hardware Corporation