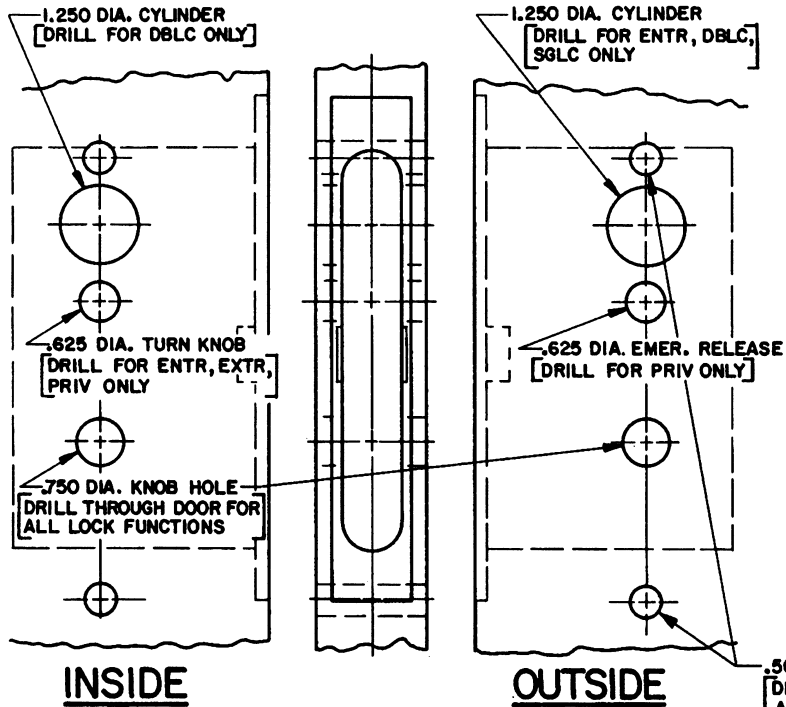
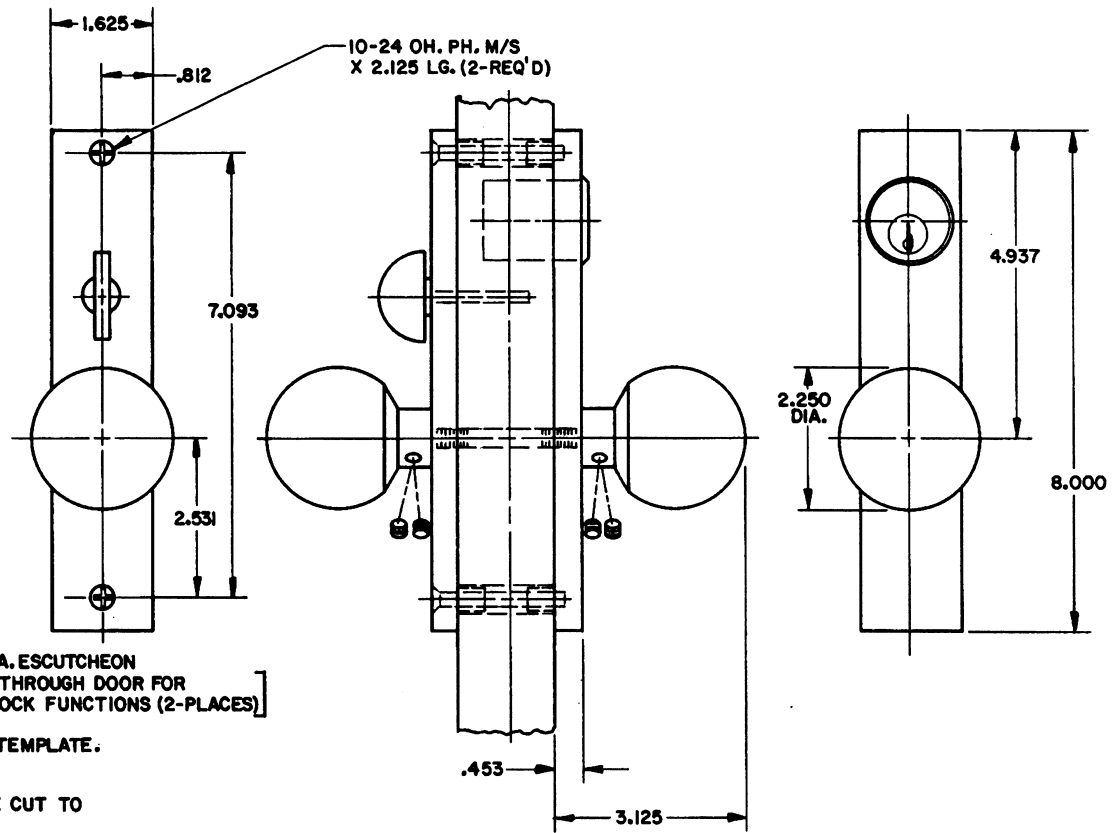


# DOOR DETAIL



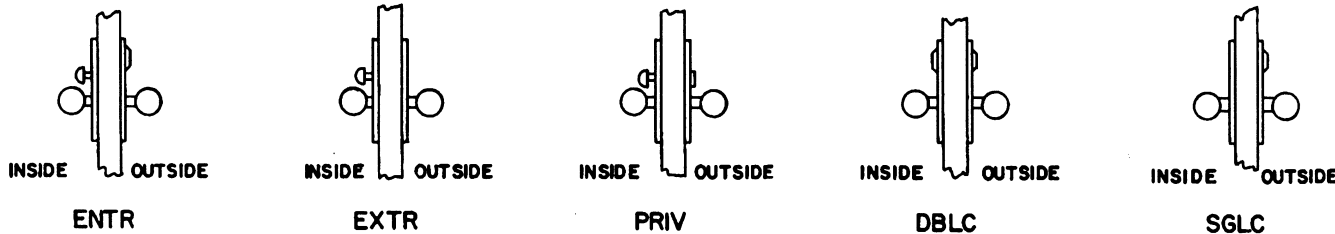
# TRIM DETAIL (ENTR FUNCTION ILLUSTRATED)



**NOTE:**

- 1.) FOR ADDITIONAL LOCK AND DOOR CUTOUT DIMENSIONS, SEE APPROPRIATE LOCK TEMPLATE.
- 2.) DRILL ALL HOLES HALFWAY THROUGH DOOR UNLESS OTHERWISE SPECIFIED.
- 3.) TO ENABLE EMERGENCY TRIM TO FUNCTION, THE TURN PIECE SPINDLE MUST BE CUT TO EXTEND NO FURTHER THAN HALF WAY THROUGH THE LOCK.
- 4.) INSTALLATION PLATES ARE NOT REQUIRED FOR THIS TRIM.

EFFECTIVE: 2-1-90 R.A.S.



<b>BALDWIN</b>	
<b>6548 DETROIT TRIM</b>	
TEMPLATE NO. VARIATIONS	TEMPLATE NO.
	<b>I548</b>

**DO NOT SCALE DRAWING**

©1990 by Baldwin Hardware Corporation