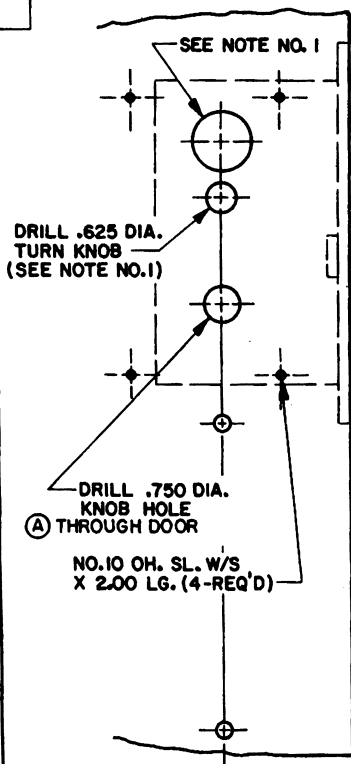
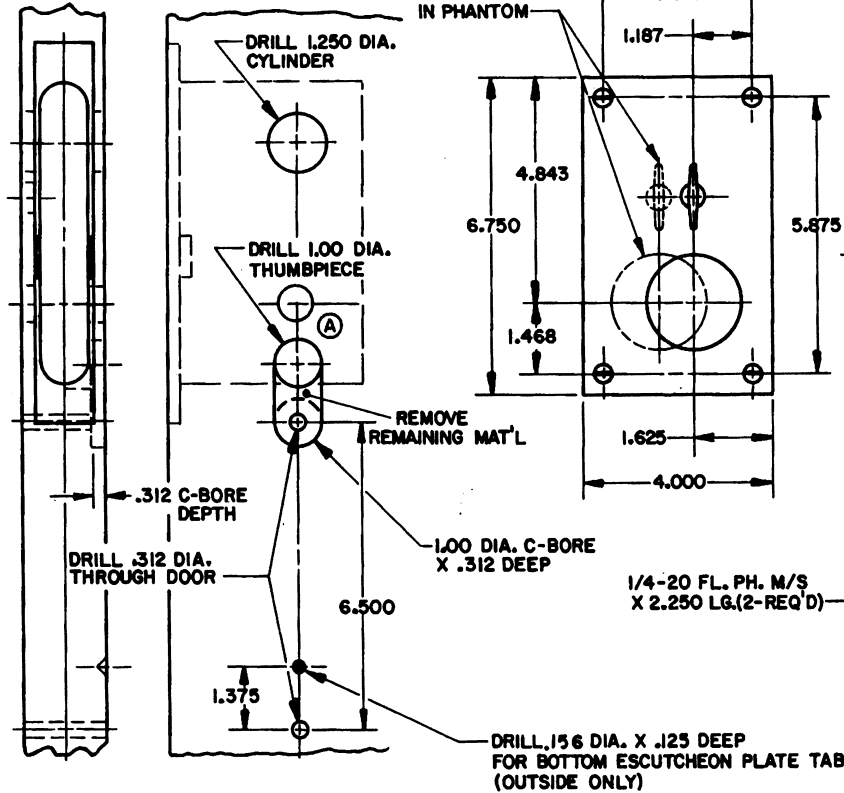


DOOR DETAIL

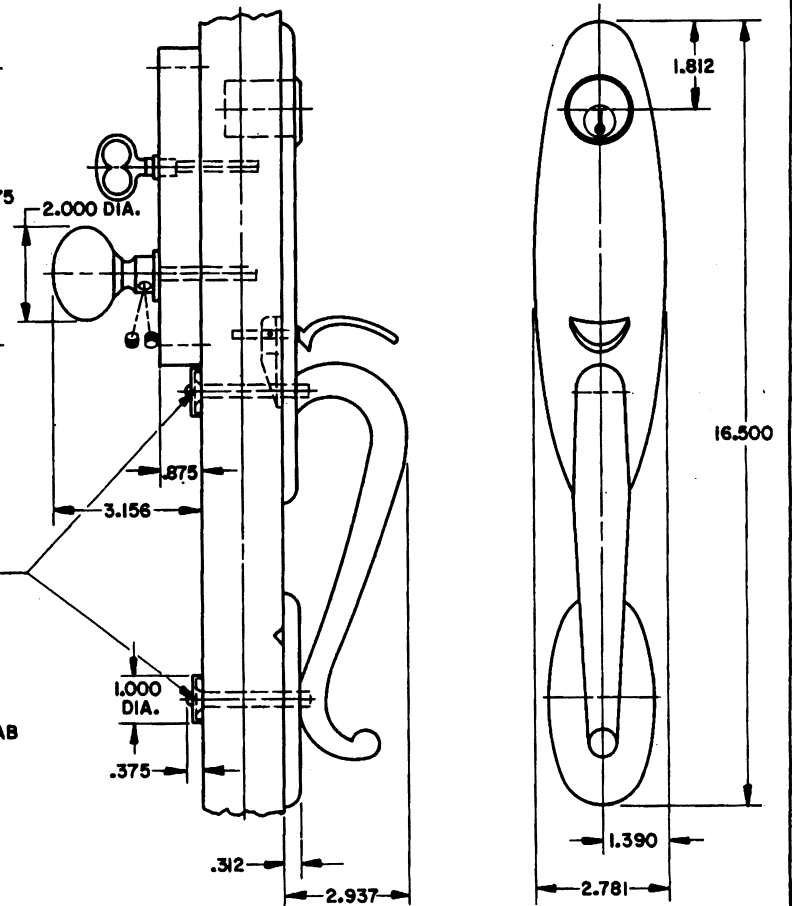


INSIDE



OUTSIDE

TRIM DETAIL (LENT FUNCTION ILLUSTRATED)



- NOTE:**
- 1.) WHEN PREPARING DOOR FOR RDBL FUNCTION, OMIT DRILLING OF .625 DIA. TURN KNOB HOLE.(INSIDE) DRILL A 1.250 DIA. CYLINDER HOLE INSTEAD, USING SAME CENTER LINE AS OUTSIDE CYLINDER HOLE.
 - 2.) DRILL ALL HOLES HALFWAY THROUGH DOOR UNLESS OTHERWISE SPECIFIED.
 - 3.) FOR ADDITIONAL LOCK AND DOOR CUTOUT DIMENSIONS, SEE APPROPRIATE LOCK TEMPLATE.
 - 4.) INSTALLATION PLATES ARE NOT REQUIRED FOR THIS TRIM.

EFFECTIVE: 1-31-91

BALDWIN	
6549 WILLIAMSBURG TRIM	
TEMPLATE NO. VARIATIONS	TEMPLATE NO.
	I549A

DO NOT SCALE DRAWING

©1990 by Baldwin Hardware Corporation