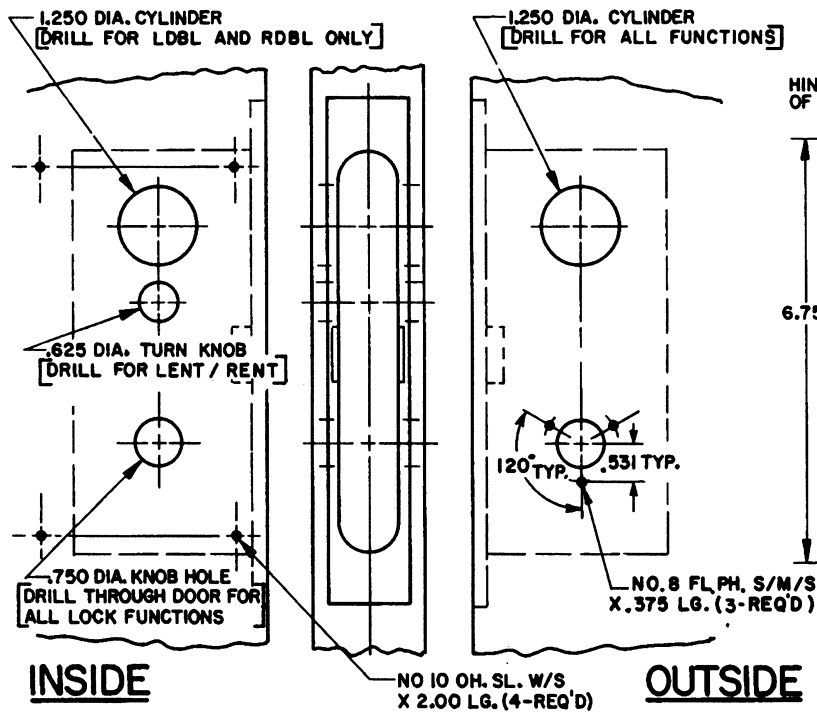
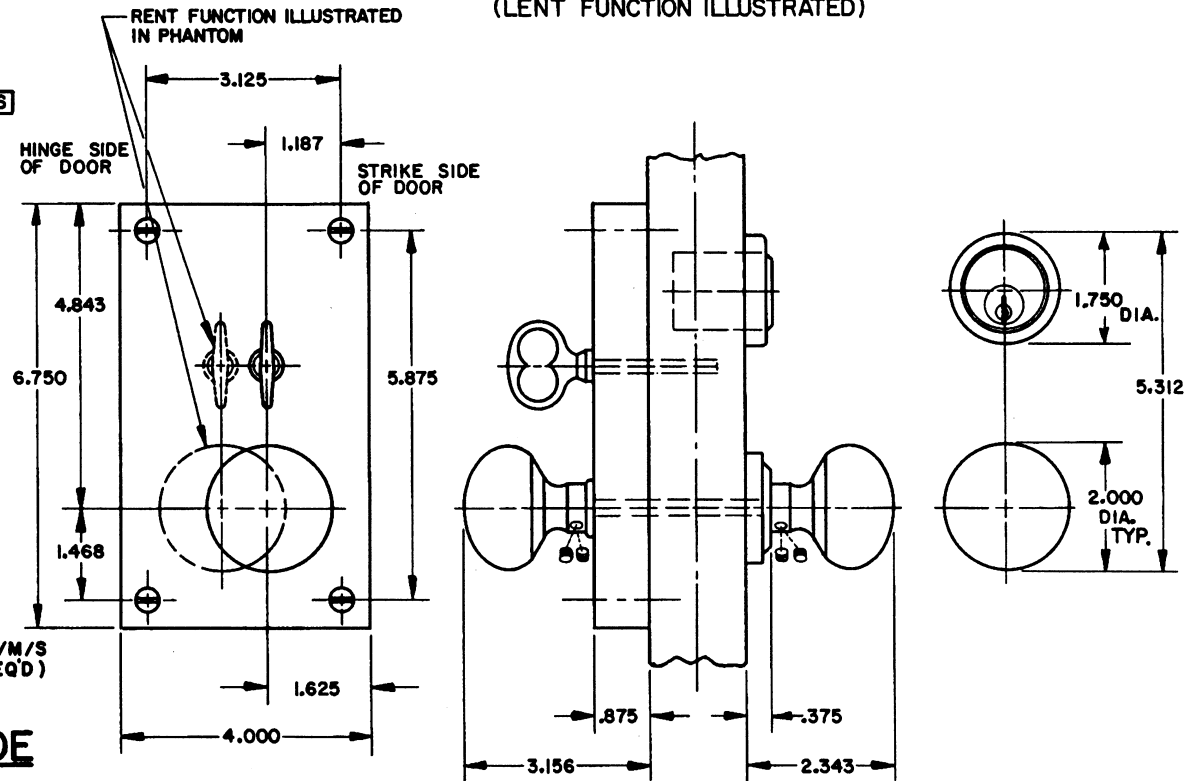


DOOR DETAIL



TRIM DETAIL (LENT FUNCTION ILLUSTRATED)



NOTE:

- 1.) FOR ADDITIONAL LOCK AND DOOR CUTOUT DIMENSIONS, SEE APPROPRIATE LOCK TEMPLATE.
- 2.) DRILL ALL HOLES HALF WAY THROUGH DOOR UNLESS OTHERWISE SPECIFIED.
- 3.) TO ENABLE EMERGENCY TRIM TO FUNCTION, THE TURN PIECE SPINDLE MUST BE CUT TO EXTEND NO FURTHER THAN HALF WAY THROUGH THE LOCK.
- 4.) INSTALLATION PLATES ARE NOT REQ'D.



BALDWIN	
6550 GEORGETOWN TRIM	
TEMPLATE NO. VARIATIONS	TEMPLATE NO.
	I550

DO NOT SCALE DRAWING