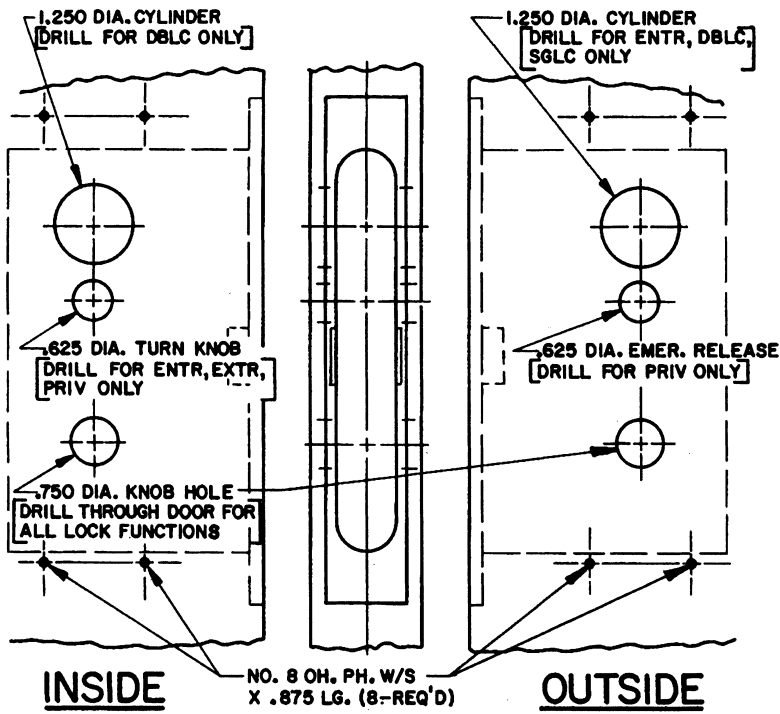
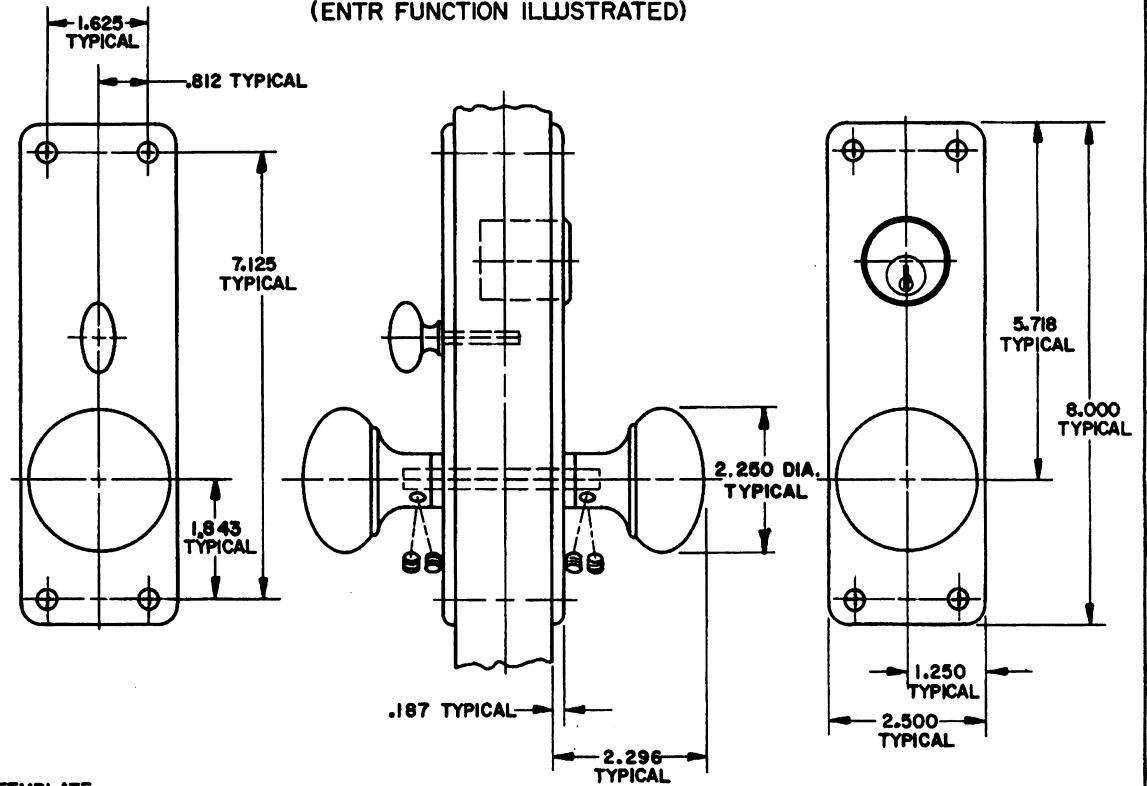


# DOOR DETAIL

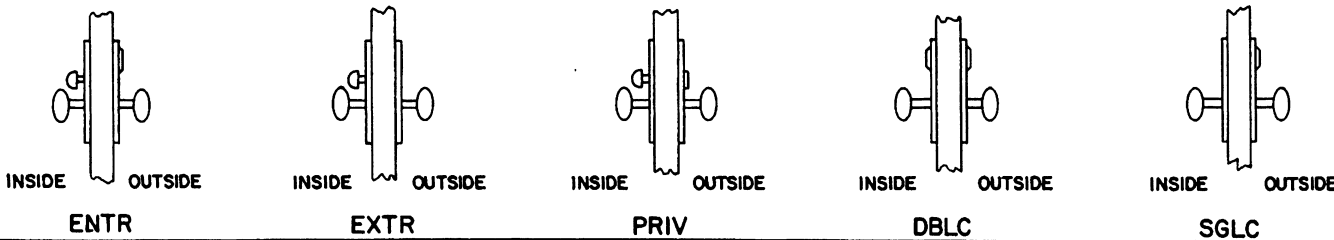


# TRIM DETAIL (ENTR FUNCTION ILLUSTRATED)



- NOTE:**
- 1.) FOR ADDITIONAL LOCK AND DOOR CUTOUT DIMENSIONS, SEE APPROPRIATE LOCK TEMPLATE.
  - 2.) DRILL ALL HOLES HALF WAY THROUGH DOOR UNLESS OTHERWISE SPECIFIED.
  - 3.) TO ENABLE EMERGENCY TRIM TO FUNCTION, THE TURN PIECE SPINDLE MUST BE CUT TO EXTEND NO FURTHER THAN HALF WAY THROUGH THE LOCK.
  - 4.) INSTALLATION PLATES ARE NOT REQ'D. FOR THIS TRIM.

EFFECTIVE: 2-1-90 E.A.S.



<b>BALDWIN</b>	
<b>6551<sup>™</sup> READING TRIM</b>	
TEMPLATE NO. VARIATIONS	TEMPLATE NO.
	<b>I551</b>

DO NOT SCALE DRAWING

© 1990 by Baldwin Hardware Corporation