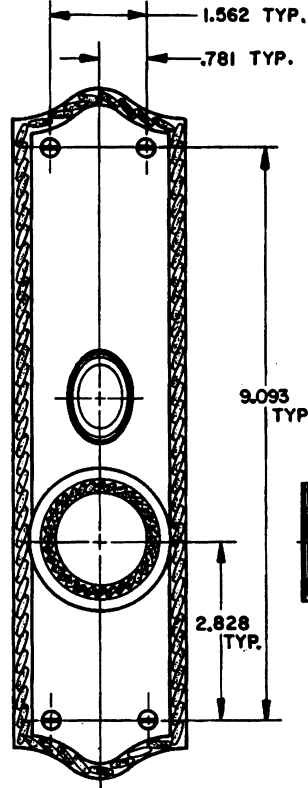
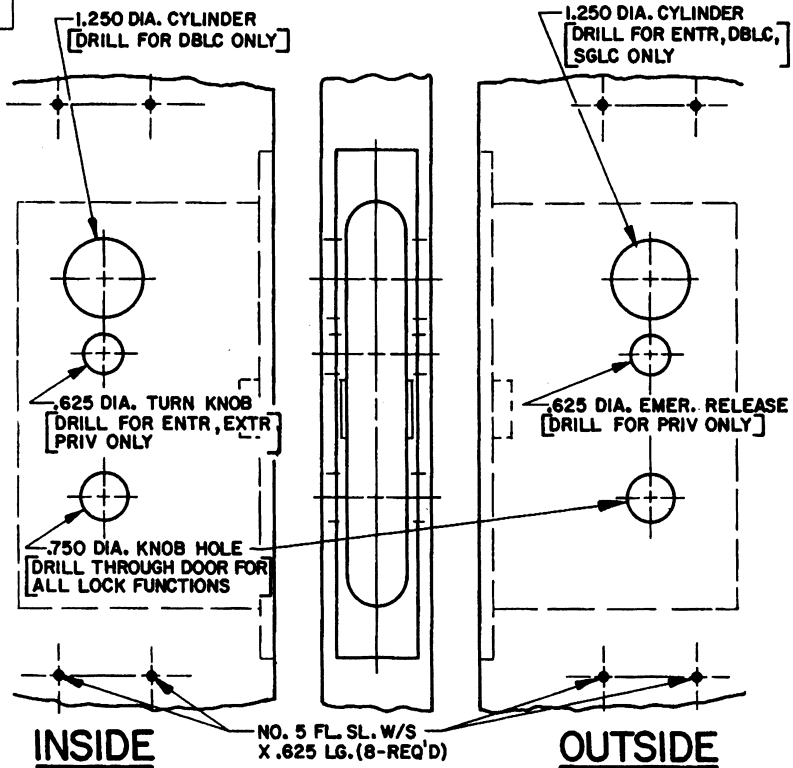
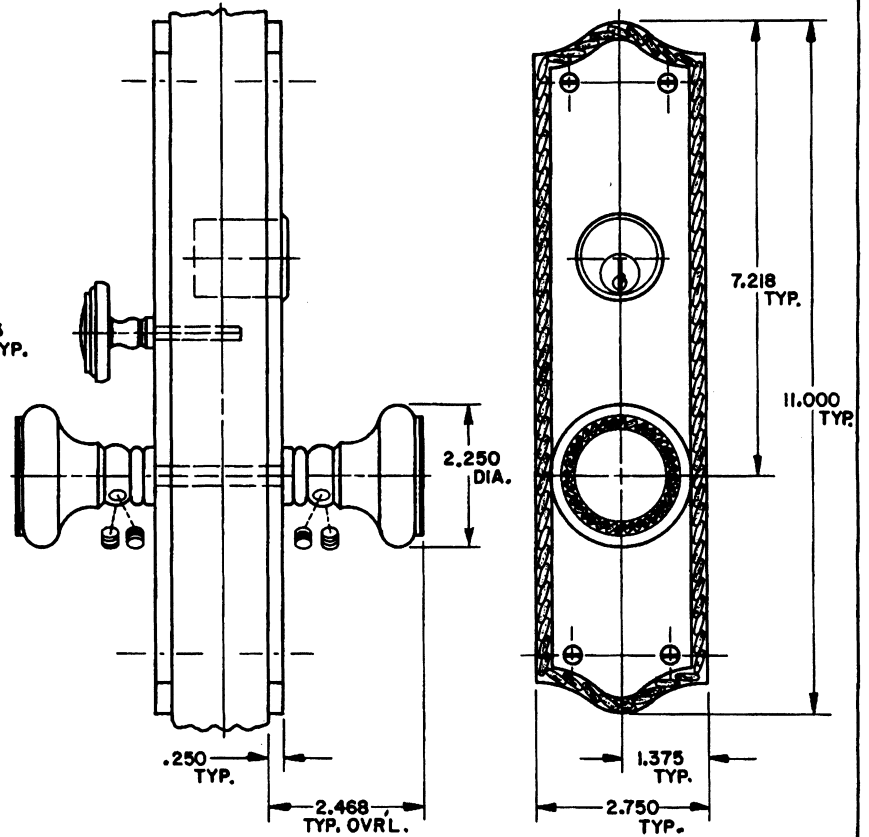


DOOR DETAIL



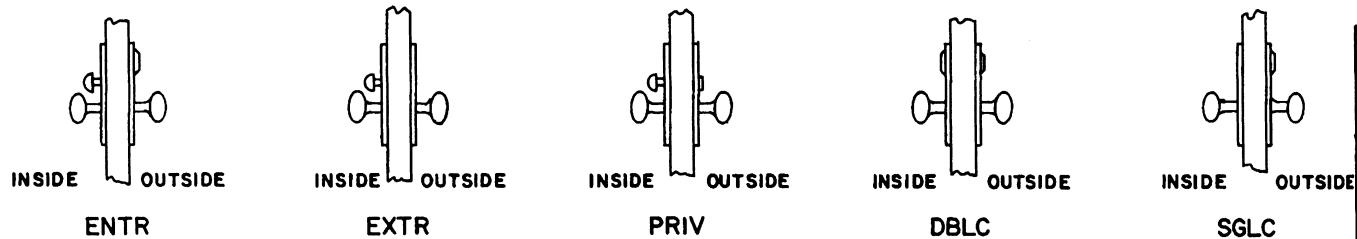
TRIM DETAIL (ENTR FUNCTION ILLUSTRATED)



NOTE:

- 1.) FOR ADDITIONAL LOCK AND DOOR CUTOUT DIMENSIONS, SEE APPROPRIATE LOCK TEMPLATE.
- 2.) DRILL ALL HOLES HALF WAY THROUGH DOOR UNLESS OTHERWISE SPECIFIED.
- 3.) TO ENABLE EMERGENCY TRIM TO FUNCTION, THE TURN PIECE SPINDLE MUST BE CUT TO EXTEND NO FURTHER THAN HALF WAY THROUGH THE LOCK.
- 4.) INSTALLATION PLATES ARE NOT REQ'D FOR THIS TRIM.

EFFECTIVE: 2-1-90 RA-4



B. BALDWIN	
6554 BARCLAY TRIM	
TEMPLATE NO. VARIATIONS	TEMPLATE NO.
	I554

DO NOT SCALE DRAWING

©1990 by Baldwin Hardware Corporation