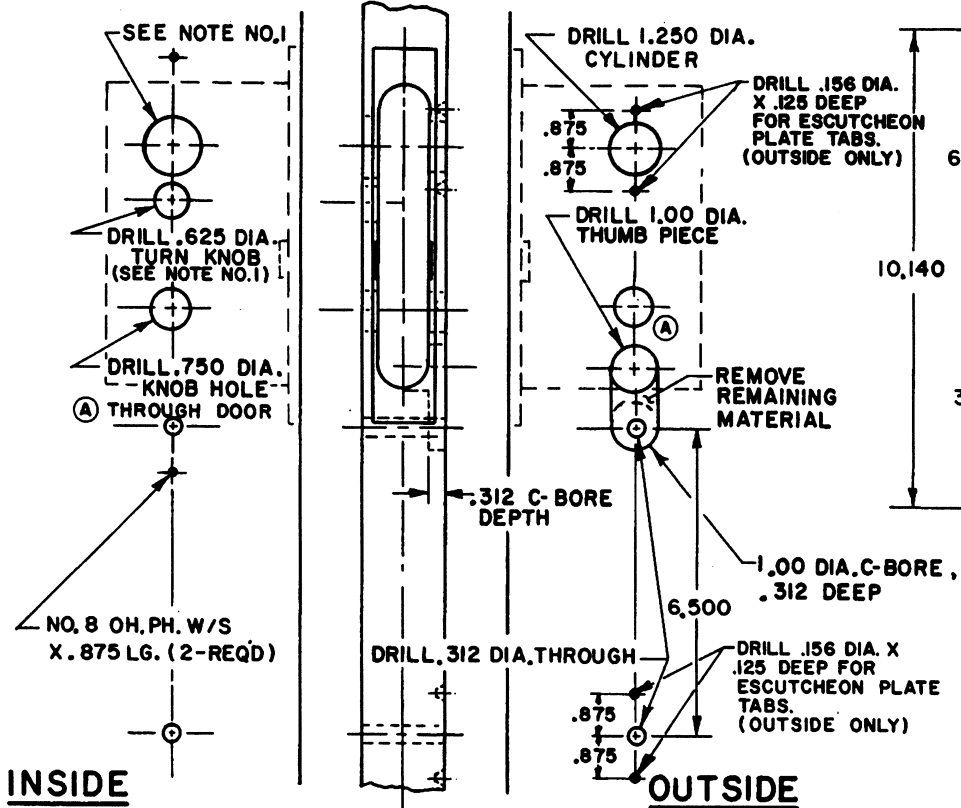
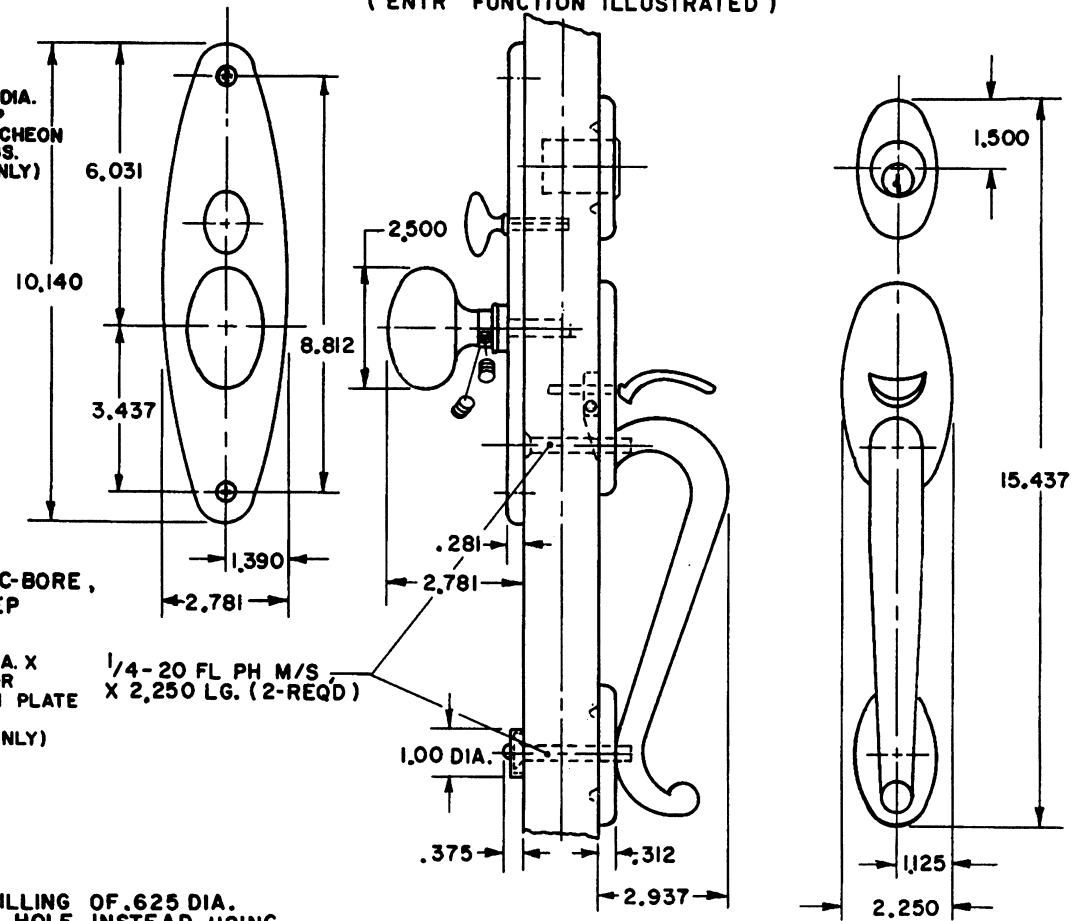


DOOR DETAIL



TRIM DETAIL (ENTR FUNCTION ILLUSTRATED)



NOTE:

- 1) WHEN PREPARING DOOR FOR DBLC FUNCTION, OMIT DRILLING OF .625 DIA. TURN KNOB HOLE (INSIDE). DRILL A 1.250 DIA. CYL. HOLE INSTEAD, USING SAME CENTER LINE AS OUTSIDE CYLINDER HOLE.
- 2) DRILL ALL HOLES HALF WAY THROUGH DOOR UNLESS OTHERWISE SPECIFIED.
- 3) FOR ADDITIONAL LOCK AND DOOR CUTOUT DIMENSIONS, SEE APPROPRIATE LOCK TEMPLATE.
- 4) INSTALLATION PLATES ARE NOT REQ'D. FOR THIS TRIM.

EFFECTIVE: 1-31-91 R.M.S.

BALDWIN	
6560 LEXINGTON TRIM	
TEMPLATE NO. VARIATIONS	TEMPLATE NO.
	I560-A

DO NOT SCALE DRAWING

©1990 by Baldwin Hardware Corporation