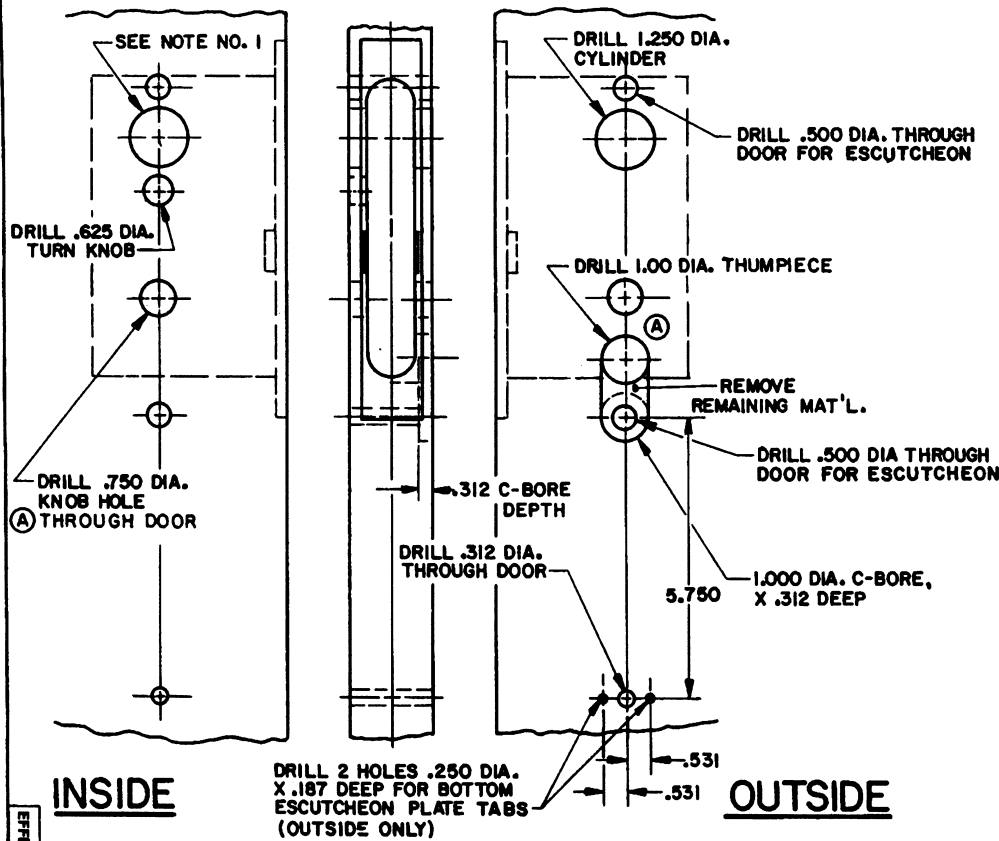
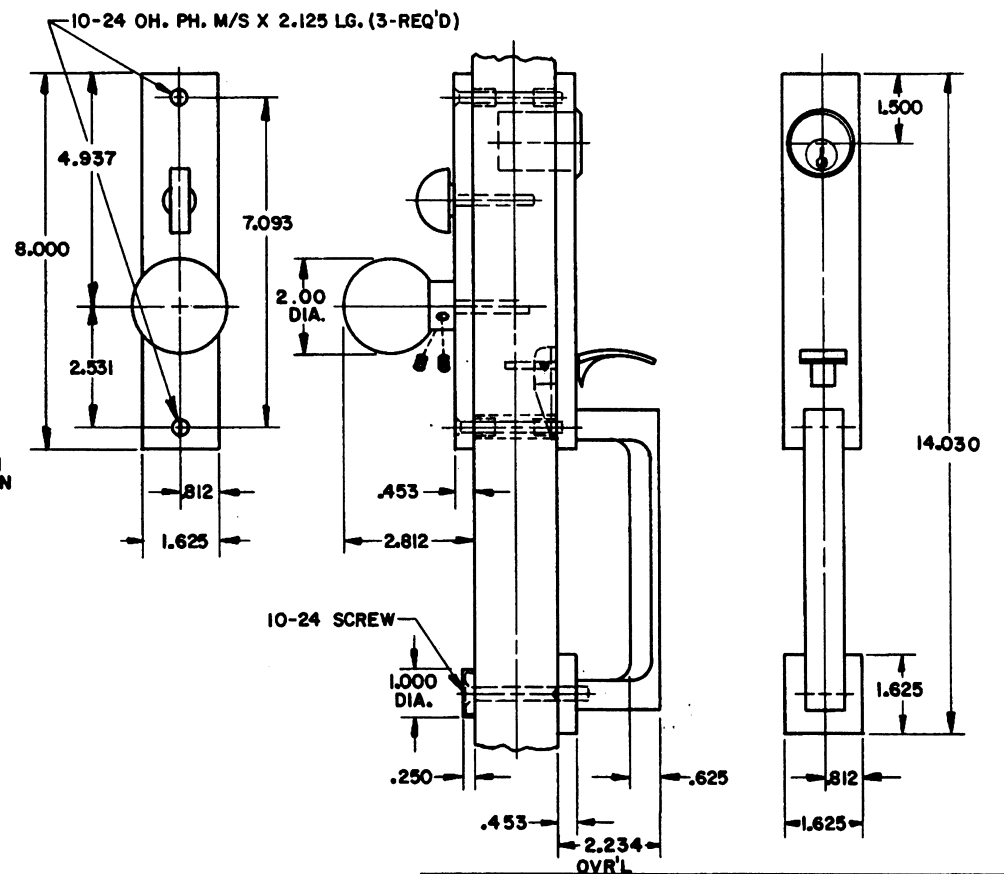


DOOR DETAIL



TRIM DETAIL (ENTR FUNCTION ILLUSTRATED)



- NOTE:**
- 1.) WHEN PREPARING DOOR FOR DBLC FUNCTION, OMIT DRILLING OF .625 DIA. TURN KNOB HOLE (INSIDE) DRILL A 1.250 DIA. CYLINDER HOLE INSTEAD, USING SAME CENTER LINE AS OUTSIDE ESCUTCHEON.
 - 2.) DRILL ALL HOLES HALF WAY THROUGH DOOR UNLESS OTHERWISE SPECIFIED.
 - 3.) FOR ADDITIONAL LOCK AND DOOR CUTOUT DIMENSIONS SEE APPROPRIATE LOCK TEMPLATE.
 - 4.) INSTALLATION PLATES ARE NOT REQ'D. FOR THIS TRIM.

BALDWIN	
6562 NEW YORK TRIM	
TEMPLATE NO. VARIATIONS	TEMPLATE NO.
	I562-A

DO NOT SCALE DRAWING

©1990 by Baldwin Hardware Corporation

EFFECTIVE: 1-31-91 R.M.S.