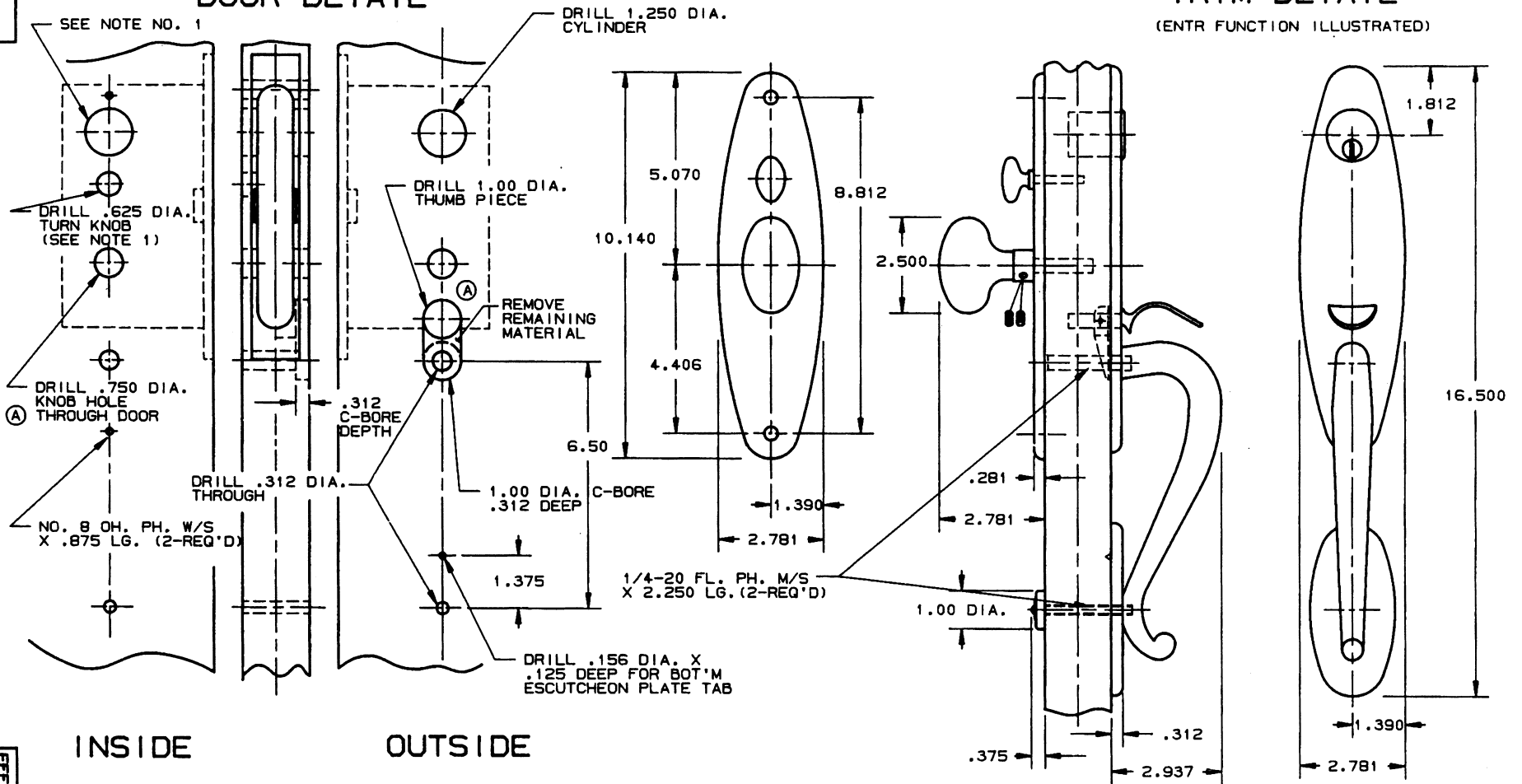


DOOR DETAIL

TRIM DETAIL

(ENTR FUNCTION ILLUSTRATED)



INSIDE

OUTSIDE

NOTE:

- 1) WHEN PREPARING DOOR FOR DBLC FUNCTION, OMIT DRILLING OF .625 DIA. TURN KNOB HOLE (INSIDE). DRILL A 1.250 DIA. CYLINDER HOLE INSTEAD, USING SAME CENTER LINE AS OUTSIDE CYLINDER HOLE.
- 2) DRILL ALL HOLES HALF WAY THROUGH DOOR UNLESS OTHERWISE SPECIFIED.
- 3) FOR ADDITIONAL LOCK AND DOOR CUTOUT DIMENSIONS SEE APPROPRIATE LOCK TEMPLATE.
- 4) INSTALLATION PLATES ARE NOT REQ'D.

DO NOT SCALE DRAWING

BALDWIN

6573 SPRINGFIELD TRIM

TEMPLATE NO. VARIATIONS

TEMPLATE NO.

I573A

EFFECTIVE 1-31-91