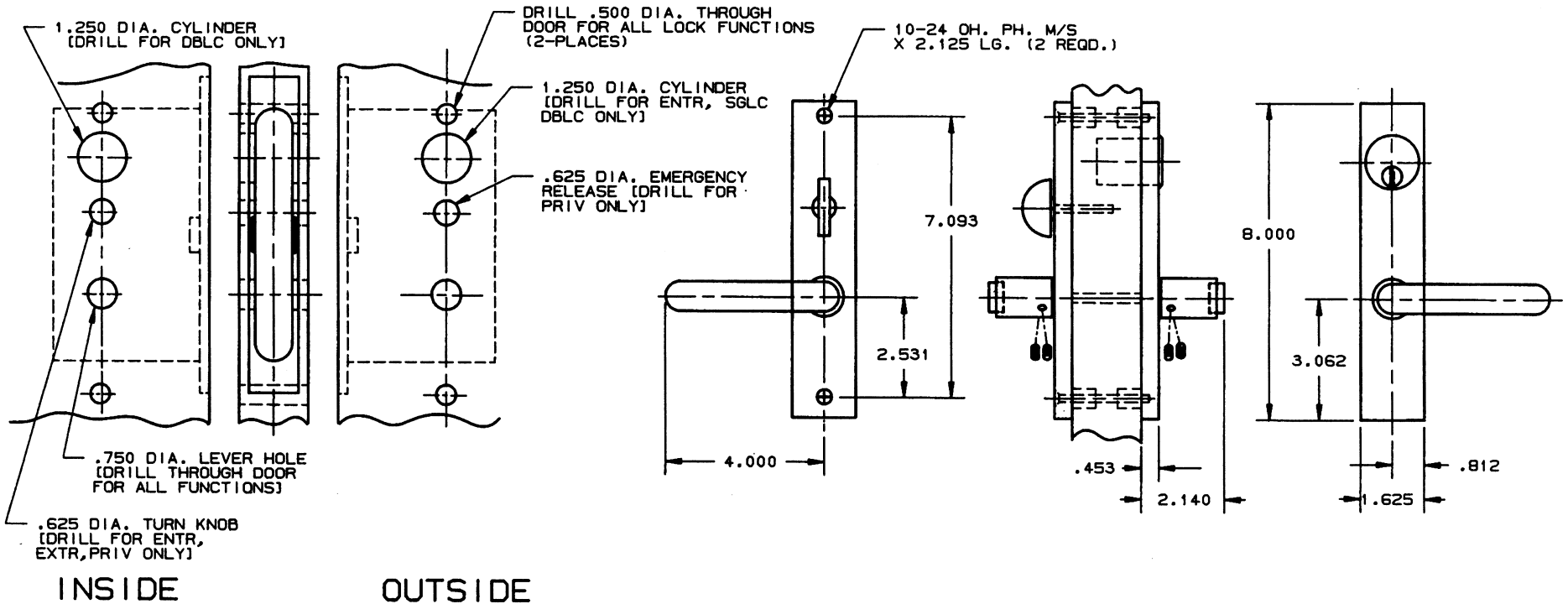


DOOR DETAIL

TRIM DETAIL



INSIDE

OUTSIDE

NOTE:

- 1) FOR ADDITIONAL LOCK AND DOOR CUTOUT DIMENSIONS, SEE APPROPRIATE LOCK TEMPLATE.
- 2) DRILL ALL HOLES HALFWAY THROUGH DOOR UNLESS OTHERWISE SPECIFIED.
- 3) TO ENABLE EMERGENCY TRIM TO FUNCTION, THE TURN PIECE SPINDLE MUST BE CUT TO EXTEND NO FURTHER THAN HALF WAY THROUGH THE LOCK.
- 4) INSTALLATION PLATES ARE NOT REQUIRED FOR THIS TRIM.

EFFECTIVE: 11-1-89 2A49

DO NOT SCALE DRAWING

B. BALDWIN	
6910 MIDTOWN TRIM	
TEMPLATE NO. VARIATIONS	TEMPLATE NO.
	I061

