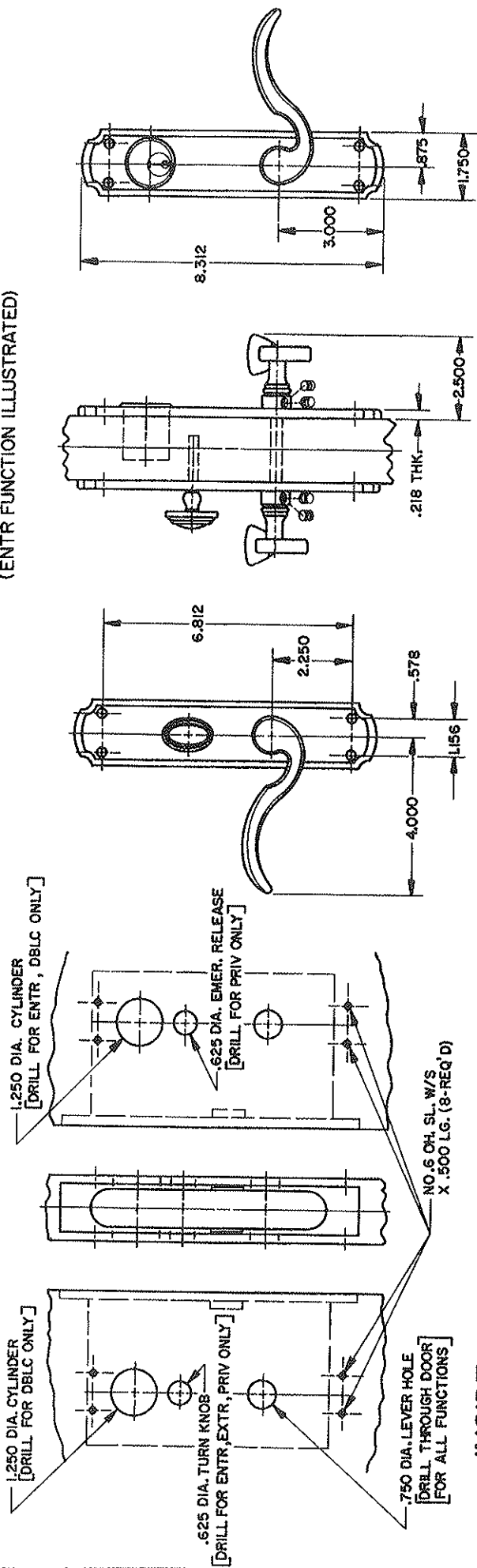


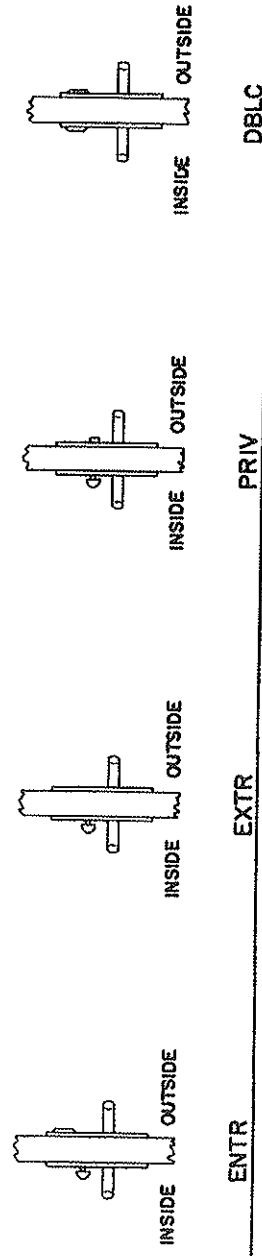
DOOR DETAIL

TRIM DETAIL (ENTR FUNCTION ILLUSTRATED)



INSIDE OUTSIDE

- NOTE:
- 1.) FOR ADDITIONAL LOCK AND DOOR CUTOUT DIMENSIONS, SEE APPROPRIATE LOCK TEMPLATE.
 - 2.) DRILL ALL HOLES HALF WAY THROUGH DOOR UNLESS OTHERWISE SPECIFIED.
 - 3.) TO ENABLE EMERGENCY TRIM TO FUNCTION, THE TURN PIECE SPINDLE MUST BE CUT TO EXTEND NO FURTHER THAN HALF WAY THROUGH THE LOCK.
 - 4.) INSTALLATION PLATES ARE NOT REQUIRED FOR THIS TRIM.



BALDWIN	
6942 BISMARCK TRIM	
TEMPLATE NO. VARIATIONS	TEMPLATE NO. I090

© 1986 by Baldwin Hardware Corporation