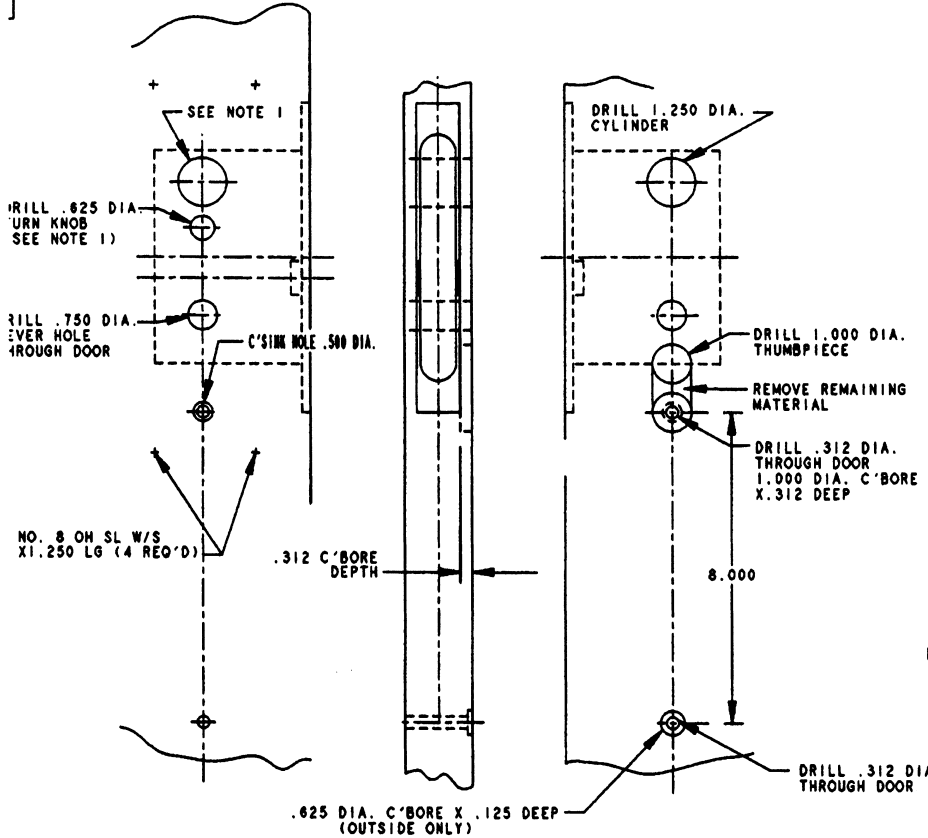


DOOR DETAIL

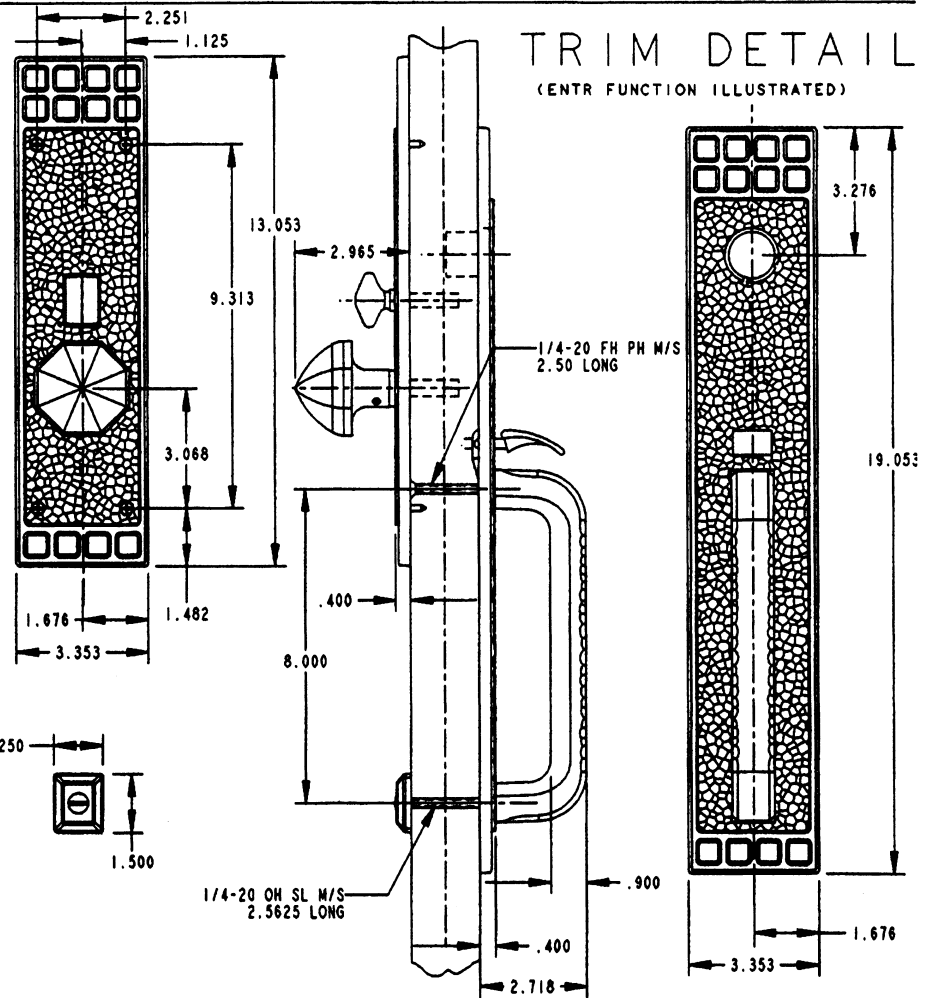


INSIDE

OUTSIDE

TRIM DETAIL

(ENTR FUNCTION ILLUSTRATED)



- NOTE:
- 1.) WHEN PREPARING DOOR FOR DBL FUNCTION, OMIT DRILLING OF .625 DIA. TURN KNOB HOLE. (INSIDE)
DRILL A 1.250 DIA. CYLINDER HOLE INSTEAD, USING THE SAME CENTER LINE AS THE OUTSIDE CYLINDER HOLE.
 - 2.) DRILL ALL HOLES HALF WAY THROUGH DOOR UNLESS OTHERWISE SPECIFIED.
 - 3.) FOR ADDITIONAL LOCK AND DOOR CUTOUT DIMENSIONS, SEE APPROPRIATE LOCK TEMPLATE.
 - 4.) INSTALLATION PLATES ARE NOT REQUIRED FOR THIS TRIM.

DO NOT SCALE DRAWING

BALDWIN	
6944 PASADENA	
TEMPLATE NO. VARIATIONS	TEMPLATE NO.
© 1998 BY BALDWIN HARDWARE CORPORATION	1-129