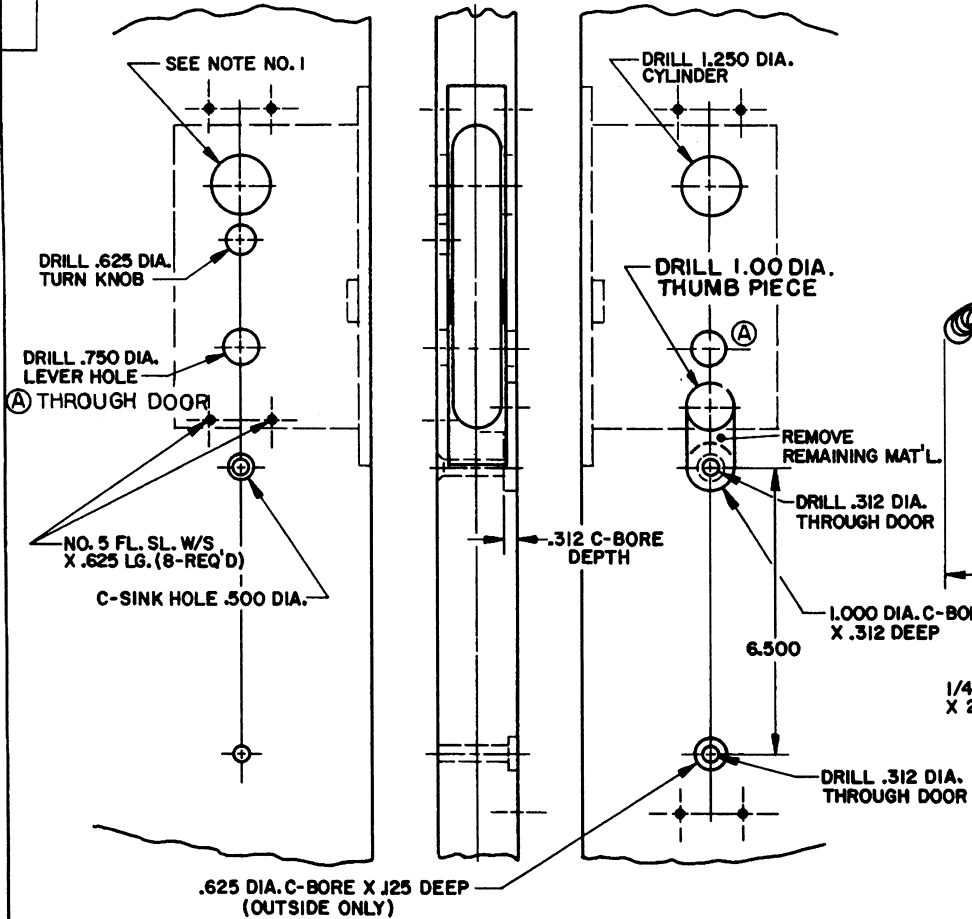
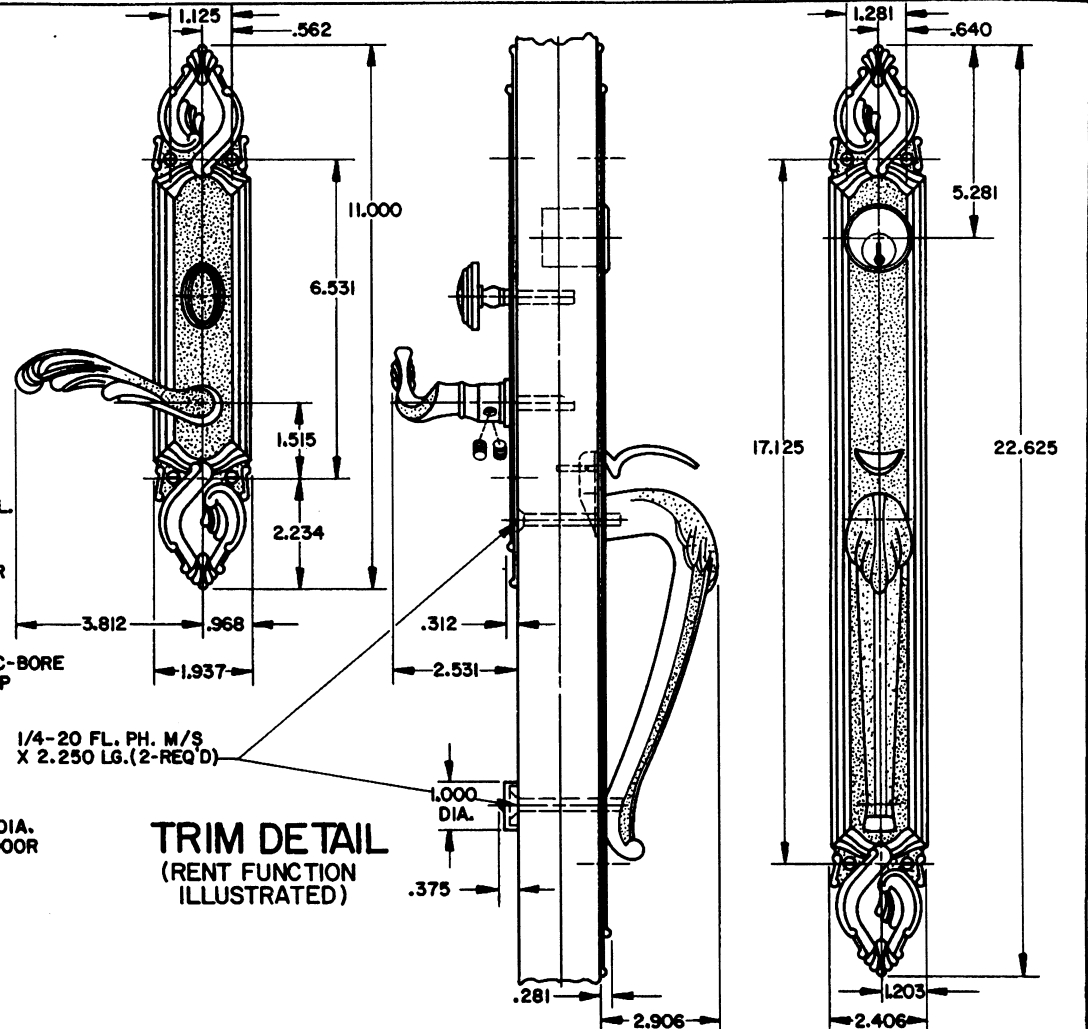


# DOOR DETAIL



**INSIDE**

**OUTSIDE**



**TRIM DETAIL**  
(RENT FUNCTION ILLUSTRATED)

- NOTE:
- 1.) WHEN PREPARING DOOR FOR RDBL FUNCTION, OMIT DRILLING OF .625 DIA. TURN KNOB HOLE. (INSIDE) DRILL A 1.250 DIA. CYLINDER HOLE INSTEAD, USING SAME CENTER LINE AS OUTSIDE CYLINDER HOLE.
  - 2.) DRILL ALL HOLES HALFWAY THROUGH DOOR UNLESS OTHERWISE SPECIFIED.
  - 3.) FOR ADDITIONAL LOCK AND DOOR CUTOUT DIMENSIONS, SEE APPROPRIATE LOCK TEMPLATE.
  - 4.) INSTALLATION PLATES ARE NOT REQUIRED FOR THIS TRIM.

<b>B. BALDWIN</b>	
<b>6948 VICTORIA TRIM</b>	
TEMPLATE NO. VARIATIONS	TEMPLATE NO.
	<b>I094-A</b>

DO NOT SCALE DRAWING

©1986 by Baldwin Hardware Corporation

EFFECTIVE: 1-31-91 R.M.-g