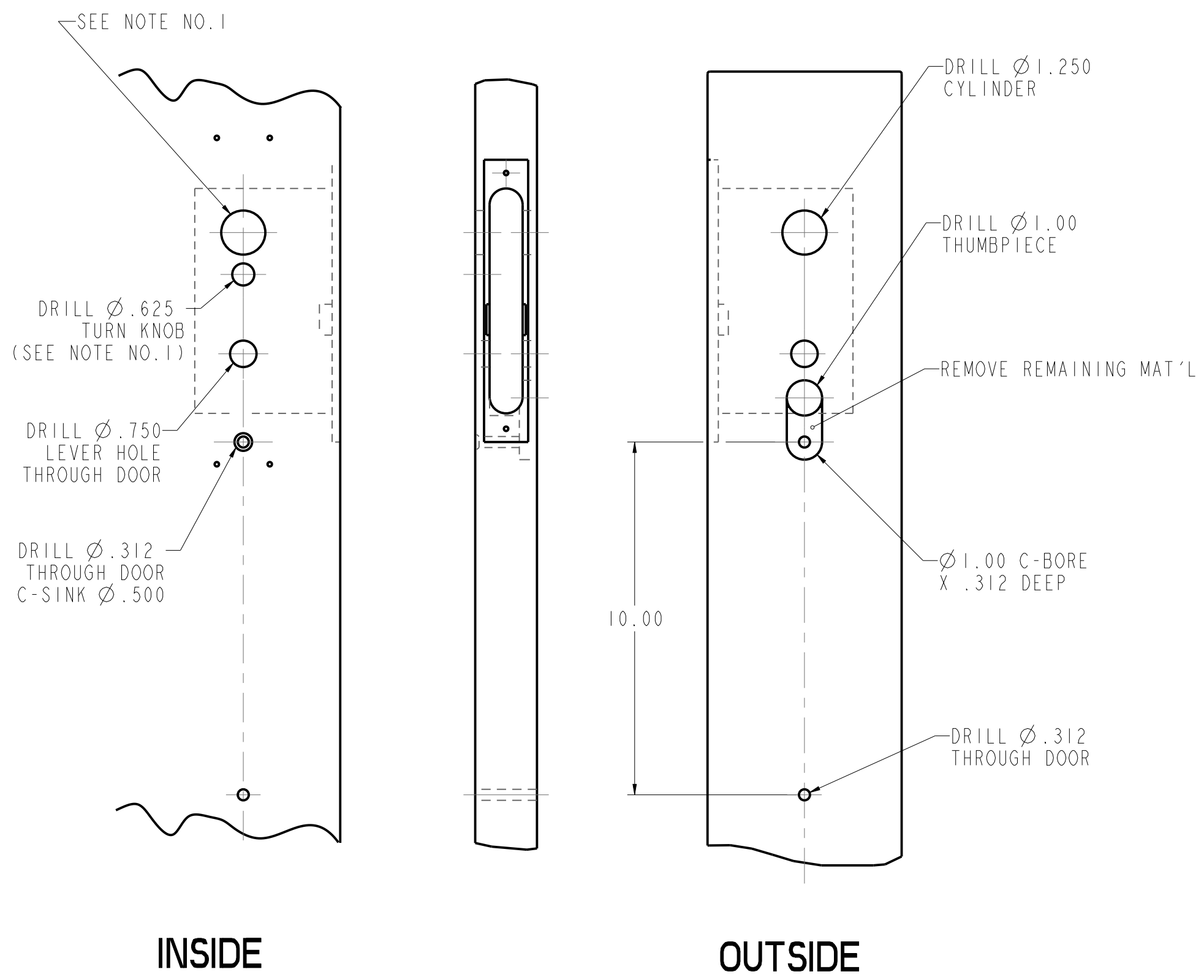


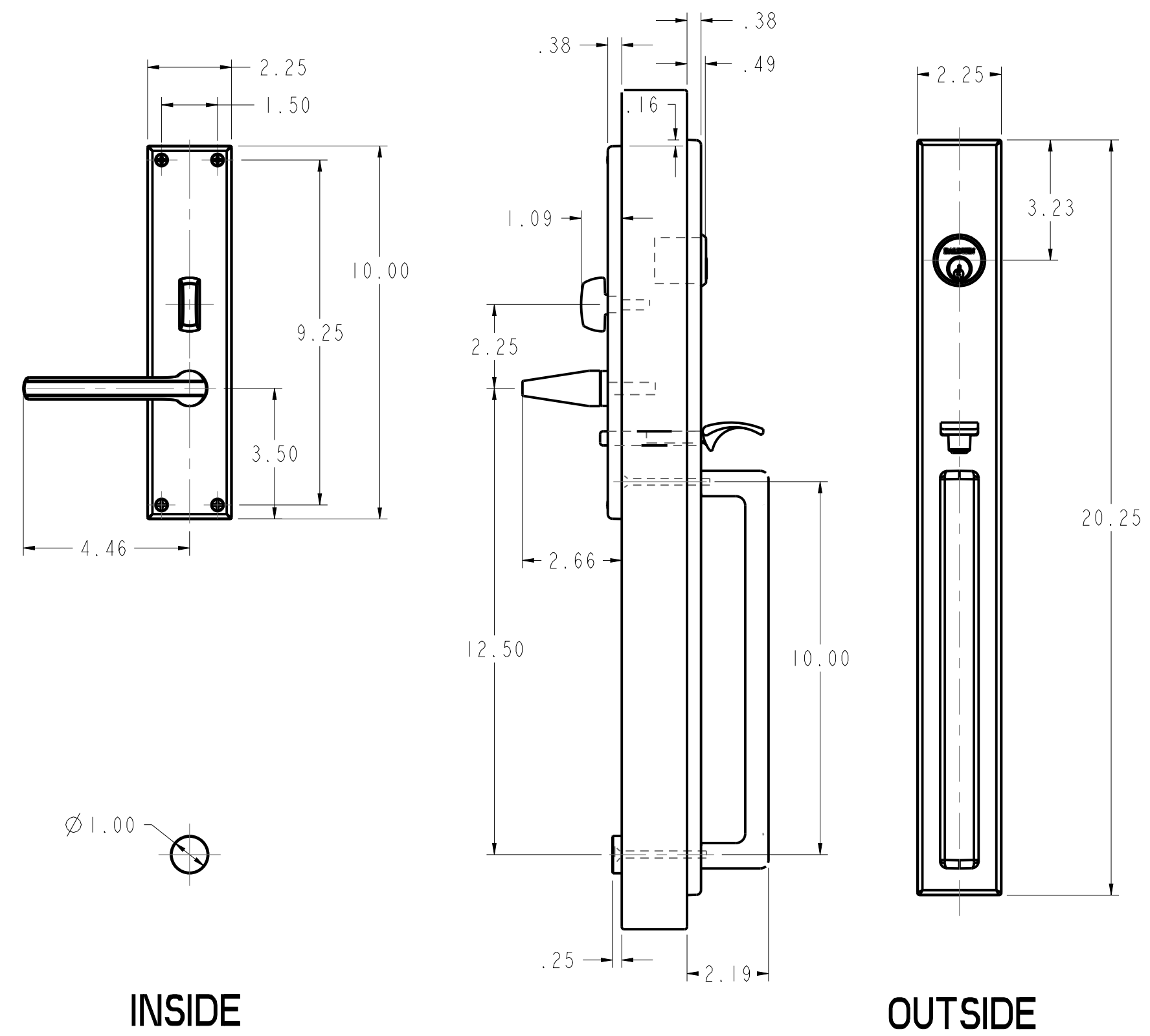
REV	DESCRIPTION
A	SEE SHEET 1

- NOTE:
1. WHEN PREPARING DOOR FOR DOUBLE CYLINDER FUNCTION, OMIT DRILLING OF  $\varnothing .625$  TURN KNOB HOLE (INSIDE). INSTEAD DRILL  $\varnothing 1.250$  CYLINDER HOLE USING SAME CENTER LINE AS OUTSIDE CYLINDER HOLE.
  2. FOR ADDITIONAL LOCK AND DOOR CUTOUT DIMENSIONS, SEE APPROPRIATE LOCK TEMPLATE.
  3. DRILL ALL HOLES HALF WAY THROUGH DOOR UNLESS OTHERWISE SPECIFIED.
  4. INSTALLATION PLATES ARE NOT REQUIRED FOR THIS TRIM.

### DOOR DETAIL



### TRIM DETAIL



TITLE		6977 MINN, 20 INCH, MRTS HS	
SIZE	DO NOT SCALE DRAWING	DWG NO	P13954
RELEASE STATE		Preliminary	
SCALE	0.300	SHEET	2 OF 2
REV	A	ITER	3

**BALDWIN**  
Spectrum Brands | Hardware & Home Improvement

THIS DOCUMENT IS THE PROPERTY OF SPECTRUM BRANDS, INC. AND/OR ITS AFFILIATES. THE CONTENTS OF THIS DOCUMENT ARE CONFIDENTIAL AND CONSTITUTE TRADE SECRETS PROPRIETARY TO SPECTRUM BRANDS. NEITHER THIS DOCUMENT NOR ITS CONTENTS SHALL BE DISCLOSED TO ANY UNAUTHORIZED PERSON, COPIED, OR PUBLISHED WITHOUT SPECTRUM BRANDS' PRIOR WRITTEN CONSENT.