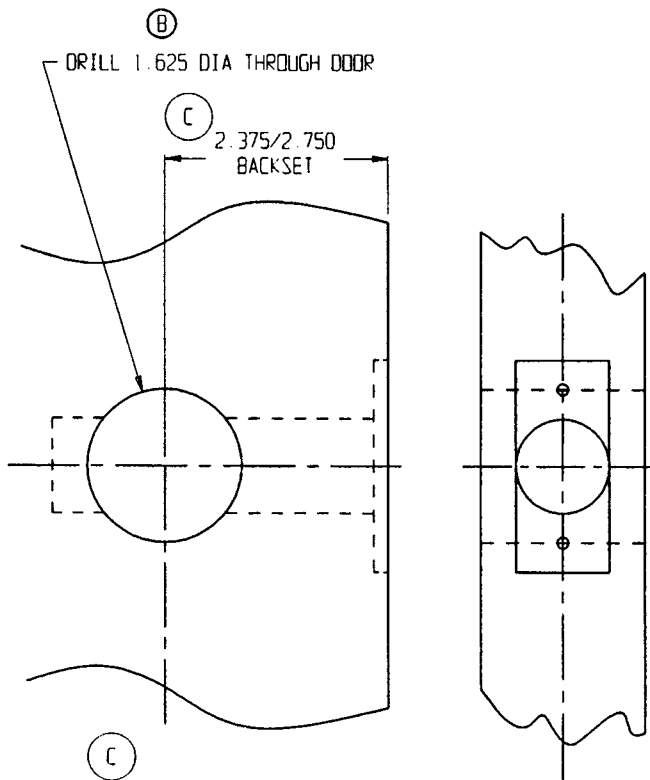
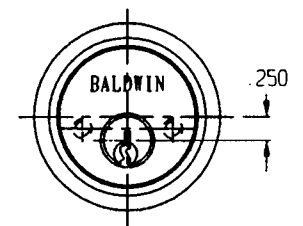
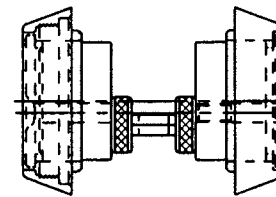
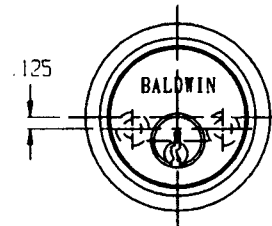
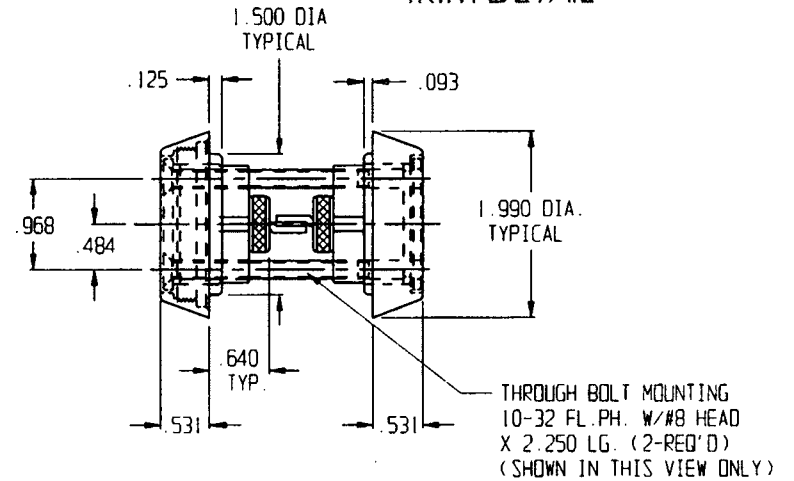


# DOOR DETAIL



# TRIM DETAIL



DO NOT SCALE DRAWING

NOTE:

- 1>REFER TO TEMPLATE #G009 FOR DEADBOLT DETAILS.
- 2>REFER TO TEMPLATE #G101 FOR STRIKE DETAILS.
- 3>SCREW LENGTH AND TAILPIECE SPECIFICATIONS SHOWN ARE FOR 1 3/4" THICK DOORS. CONVERSION KITS ARE AVAILABLE FOR THICKER DOORS.

EFFECTIVE 2-3-97

<b>BALDWIN</b>	
<b>8011 DOUBLE CYLINDER TRIM</b>	
TEMPLATE NO VARIATIONS	(C)
© 1996 BY BALDWIN HARDWARE CORPORATION	
TEMPLATE NO. <b>G011-C</b>	