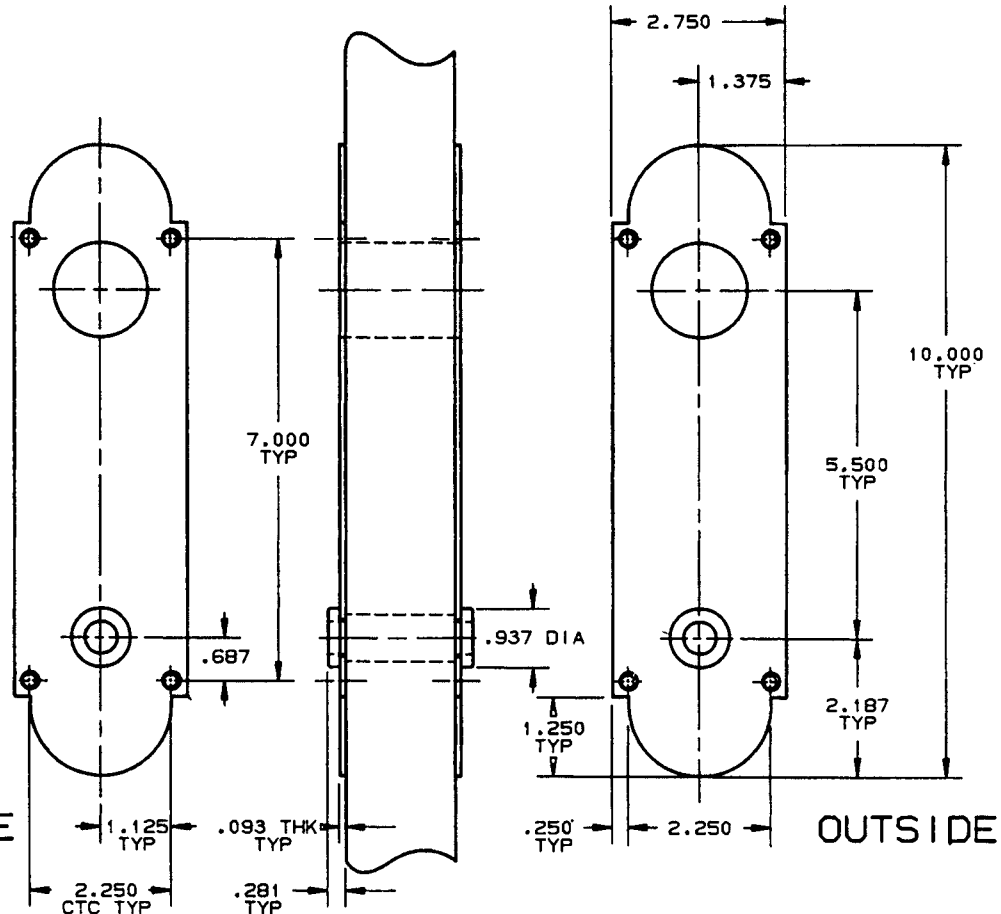
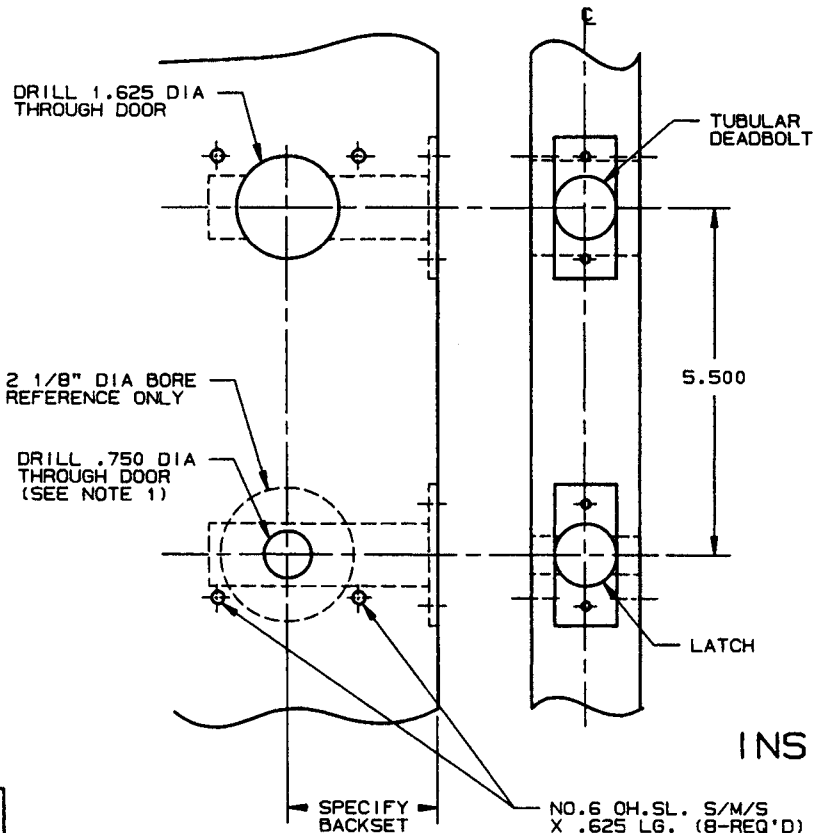


# DOOR DETAIL

# TRIM DETAIL



EFFECTIVE: 11-1-89 2/4/5

**NOTE:**

- 1.) CAN BE USED ON DOORS WITH AN EXISTING 2-1/8" BORE. (MAXIMUM)
- 2.) FOR ADDITIONAL LOCK AND DOOR CUTOUT DIMENSIONS SEE APPROPRIATE LATCH TEMPLATES.

**DO NOT SCALE DRAWING**

|                         |              |
|-------------------------|--------------|
| <b>B. BALDWIN</b>       |              |
| <b>8080 ESCUTCHEON</b>  |              |
| TEMPLATE NO. VARIATIONS | TEMPLATE NO. |
|                         | <b>G080</b>  |