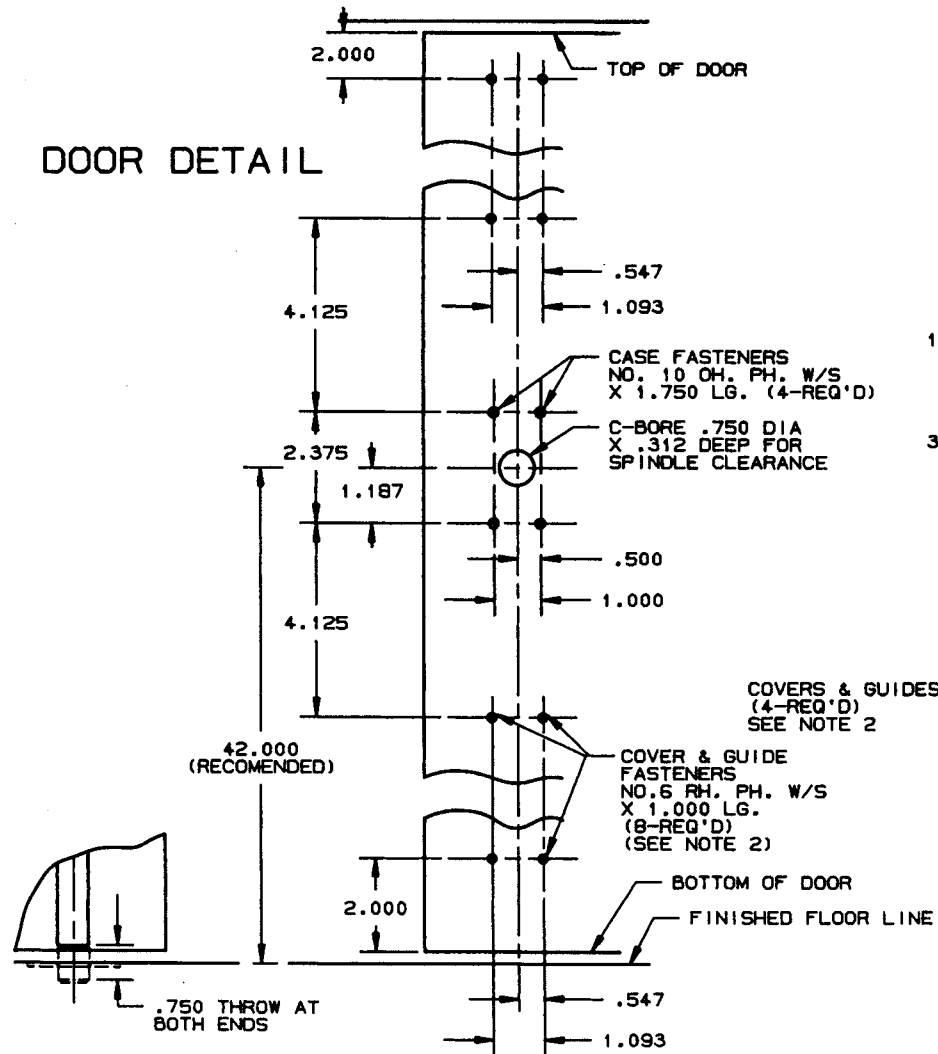
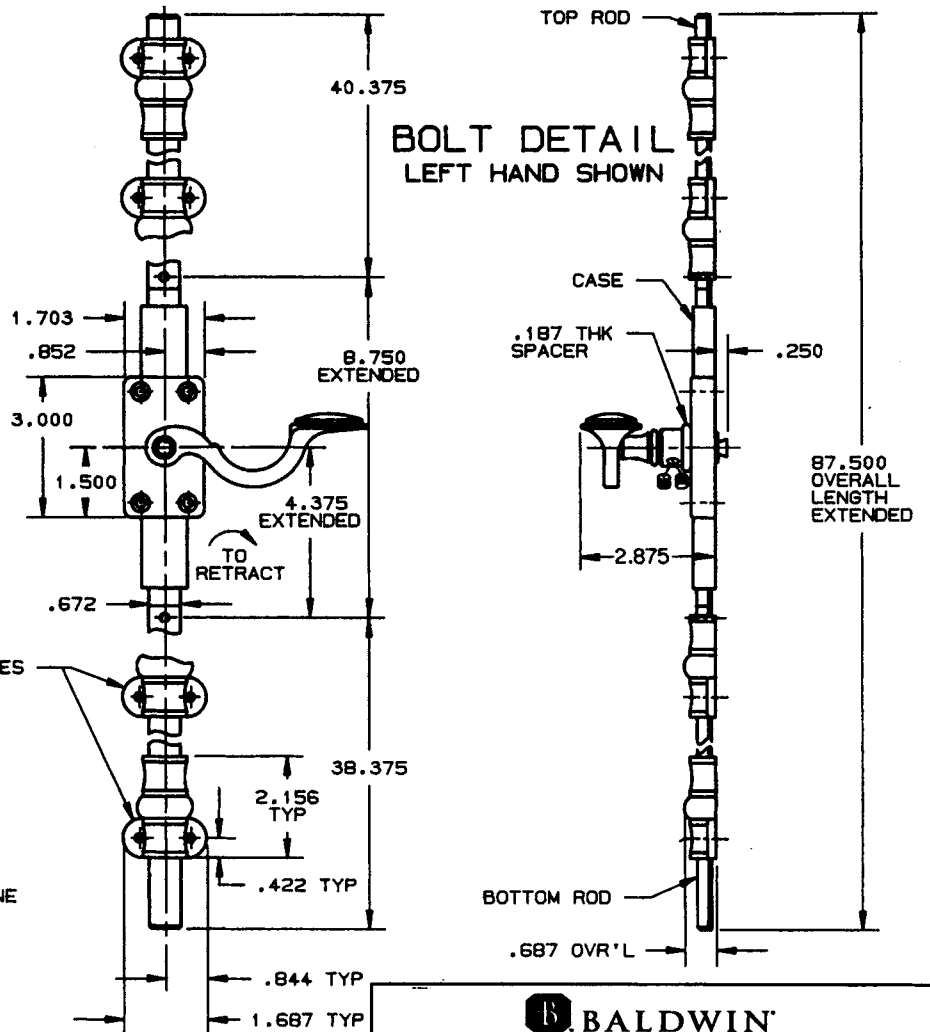


DOOR DETAIL



BOLT DETAIL LEFT HAND SHOWN



COVERS & GUIDES
(4-REQ'D)
SEE NOTE 2

COVER & GUIDE
FASTENERS
NO. 6 RH. PH. W/S
X 1.000 LG.
(8-REQ'D)
(SEE NOTE 2)

- NOTES:
- 1.) FOR STRIKE DETAILS REFER TO TEMPLATE NUMBERS A126, A129, AND A131.
 - 2.) SUPPLIED WITH 4 DECORATIVE GUIDE COVERS.

DO NOT SCALE DRAWING

B. BALDWIN	
8116-$\frac{L}{R}$ 7' CREMONE BOLT	
TEMPLATE NO. VARIATIONS	TEMPLATE NO.
	J123

EFFECTIVE 1-31-91 (RM)