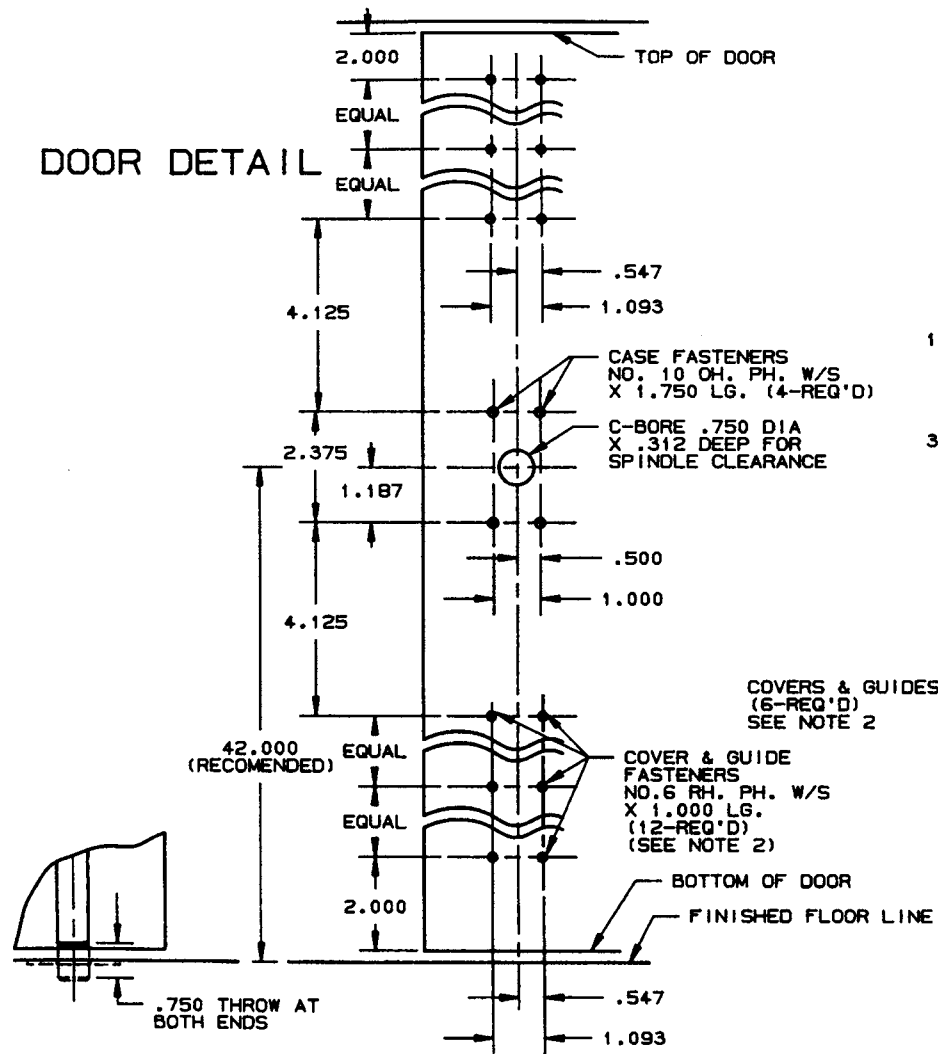
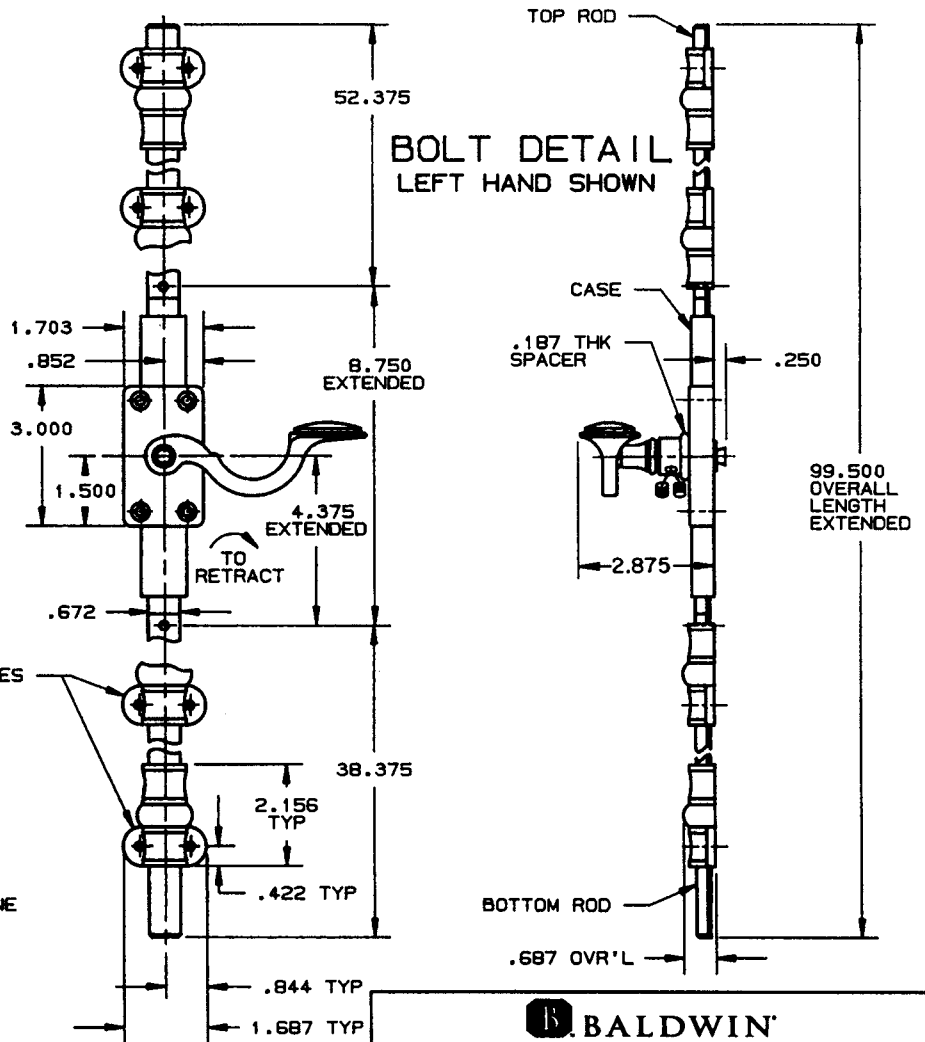


**DOOR DETAIL**



**BOLT DETAIL  
LEFT HAND SHOWN**



EFFECTIVE 1-31-91 8449

**NOTES:**

- 1.) FOR STRIKE DETAILS REFER TO TEMPLATE NUMBERS A126, A129, AND A131.
- 2.) SUPPLIED WITH 6 DECORATIVE GUIDE COVERS. (2 NOT SHOWN)

**DO NOT SCALE DRAWING**

<b>BALDWIN</b>	
<b>B116-<sup>L8</sup>/<sub>RB</sub> 8' CREMONE BOLT</b>	
TEMPLATE NO. VARIATIONS	TEMPLATE NO.
	<b>J124</b>