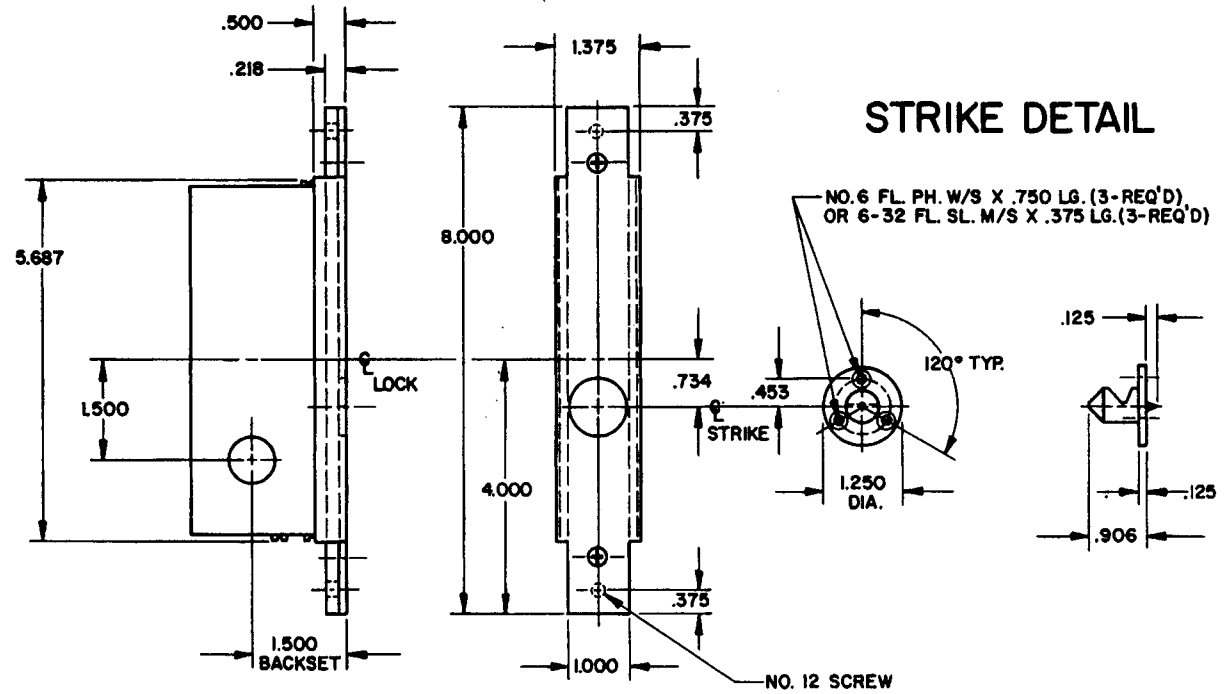
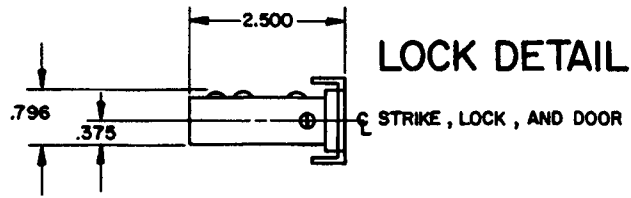
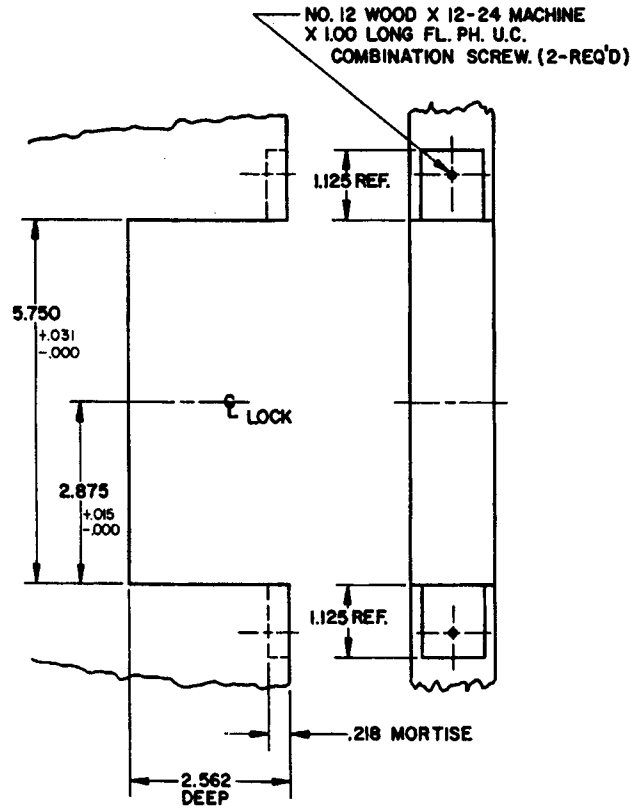


DOOR DETAIL



NOTE:

- 1.) SEE SPECIFIC TRIM TEMPLATE FOR ADDITIONAL DOOR CUTOUT DETAILS.
- 2.) THIS LOCK IS TO BE USED ON 1.375 THICK DOORS ONLY.

B. BALDWIN	
8570 LOCK (PASS)	
TEMPLATE NO. VARIATIONS	TEMPLATE NO.
	J046

EFFECTIVE 5-1-88 2.14.4

DO NOT SCALE DRAWING

© 1988 by Baldwin Hardware Corporation