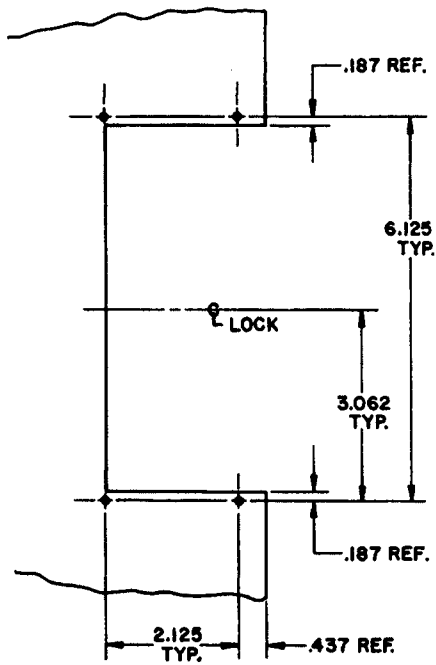
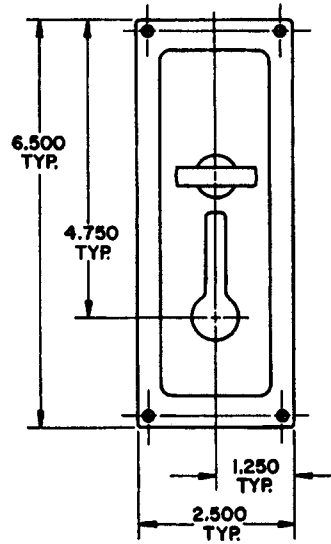
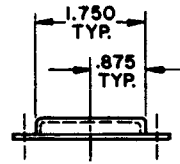


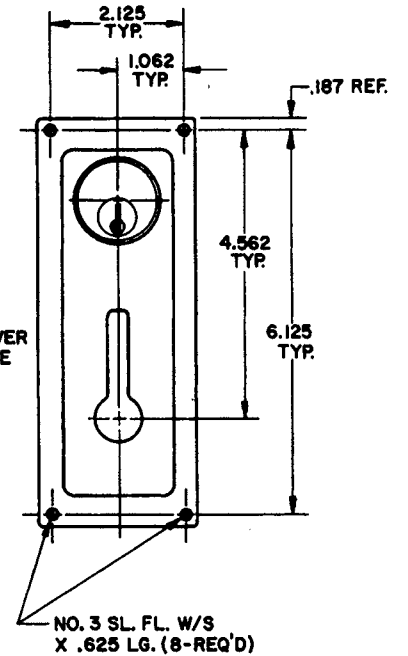
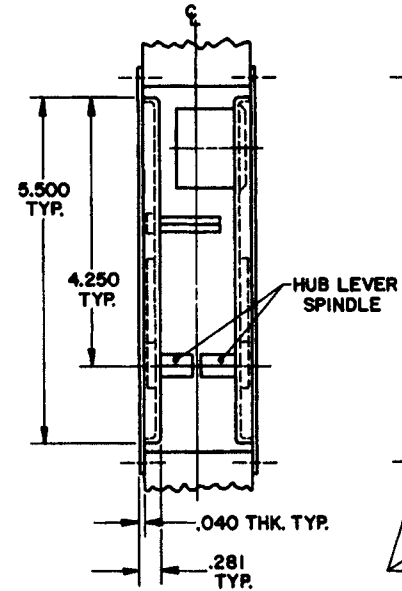
DOOR DETAIL



TRIM DETAIL



INSIDE



OUTSIDE

NOTE:

- 1.) FOR ADDITIONAL LOCK AND DOOR CUTOUT DIMENSIONS, SEE APPROPRIATE LOCK TEMPLATE.
- 2.) WHEN TRIM IS USED ON A 1.375 THK. DOOR, THE HUB LEVER SPINDLE MUST BE CUT TO EXTEND NO FURTHER THAN HALFWAY THROUGH THE LOCK.

EFFECTIVE: 5-1-88

BALDWIN	
8590 AND 8595 ENTRANCE TRIM	
TEMPLATE NO. VARIATIONS	TEMPLATE NO.
8590 FOR 1.375 THK. DOORS ONLY	J152
8595 FOR 1.750 THK. DOORS ONLY	

DO NOT SCALE DRAWING

©1988 by Baldwin Hardware Corporation