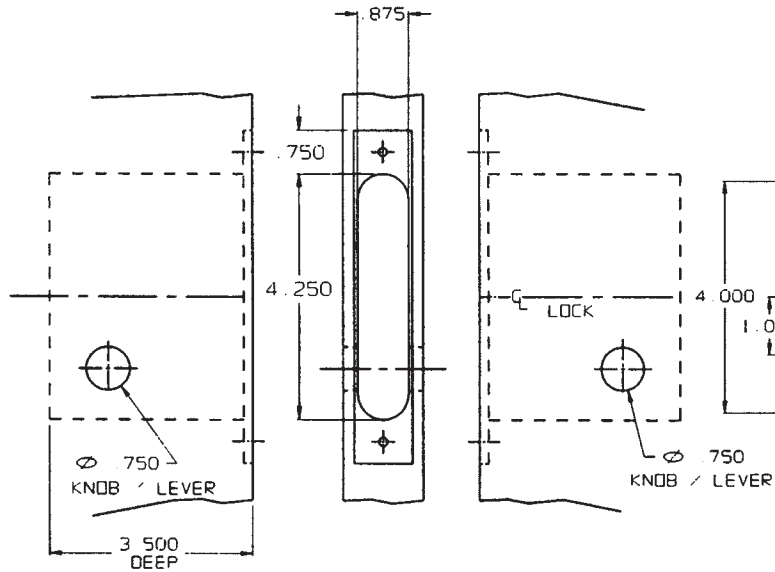


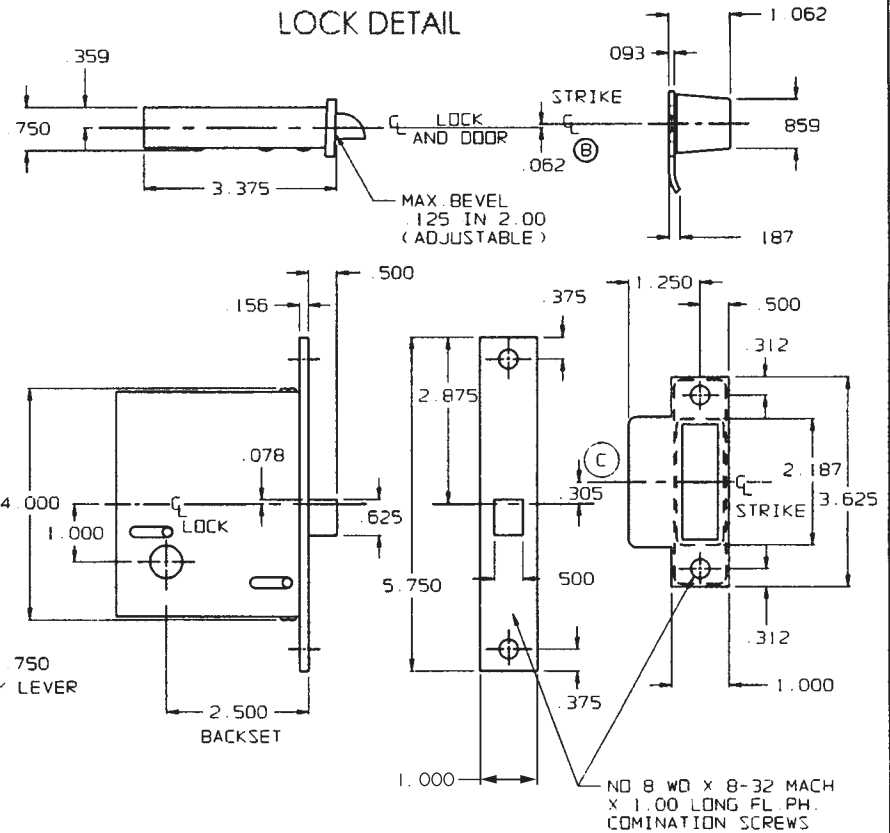
DOOR DETAIL



INSIDE

OUTSIDE

LOCK DETAIL



NOTE:

1. THIS TEMPLATE IS TO BE USED WHEN INVERTED LOCK INSTALLATION IS REQ'D. REFER TO H285C WHEN STANDARD INSTALLATION REQ'D.
2. SEE SPECIFIC TRIM TEMPLATE FOR ADDITIONAL DOOR CUTOUT DETAILS.
3. USE THIS TEMPLATE WHEN 6500 SERIES ESCUTCHEON TRIM IS USED IN CONJUNCTION WITH THIS LOCK.

EFFECTIVE: 2-3-97

DO NOT SCALE DRAWING

**B. BALDWIN**

8530 & 8535 INVERTED INSTALLATION

TEMPLATE NO. VARIATIONS  
H285 - C

TEMPLATE NO.  
H287 - C