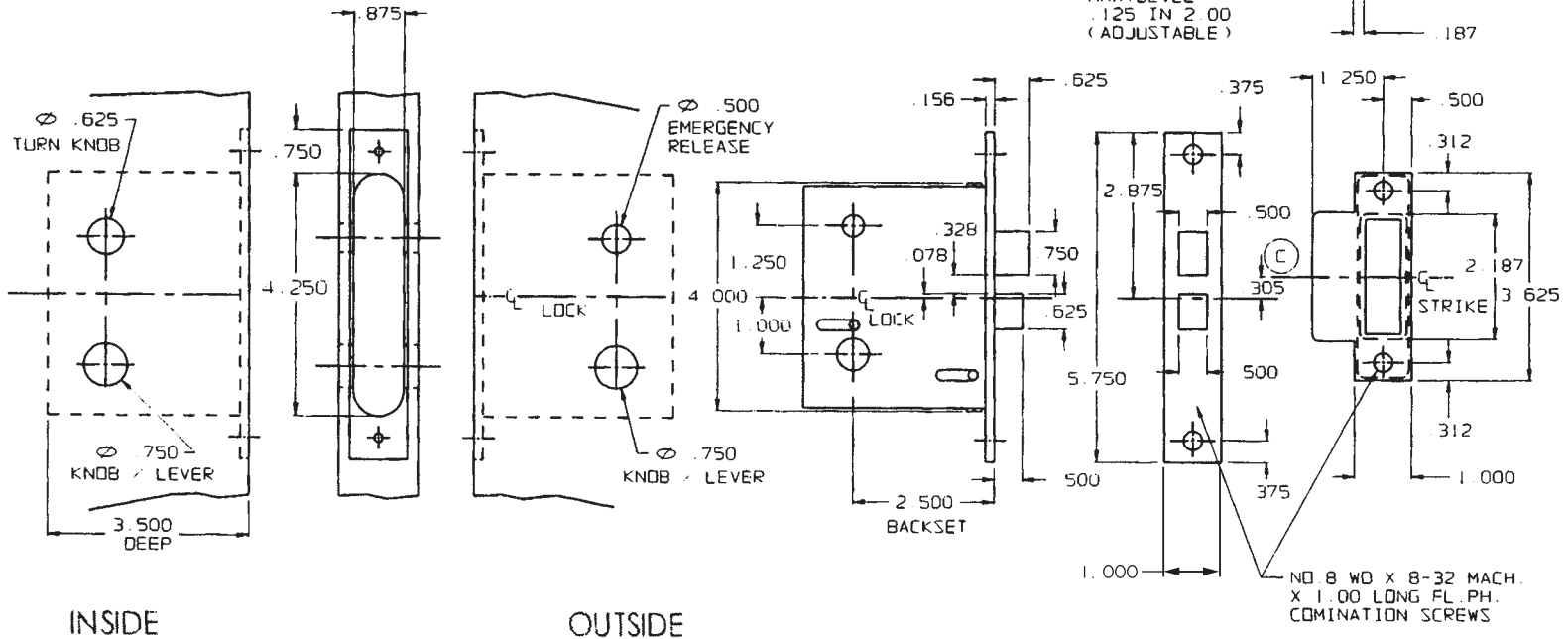


DOOR DETAIL

LOCK DETAIL



NOTE:

1. THIS TEMPLATE IS TO BE USED WHEN INVERTED LOCK INSTALLATION IS REQ'D. REFER TO H286C WHEN STANDARD INSTALLATION REQ'D.
2. SEE SPECIFIC TRIM TEMPLATE FOR ADDITIONAL DOOR CUTOUT DETAILS.
3. USE THIS TEMPLATE WHEN 6500 SERIES ESCUTCHEON TRIM IS USED IN CONJUNCTION WITH THIS LOCK.

EFFECTIVE 2-3-97

DO NOT SCALE DRAWING

**B. BALDWIN**

8540 & 8545 INVERTED INSTALLATION

TEMPLATE NO. VARIATIONS  
H286 - C

TEMPLATE NO.  
H288 - C