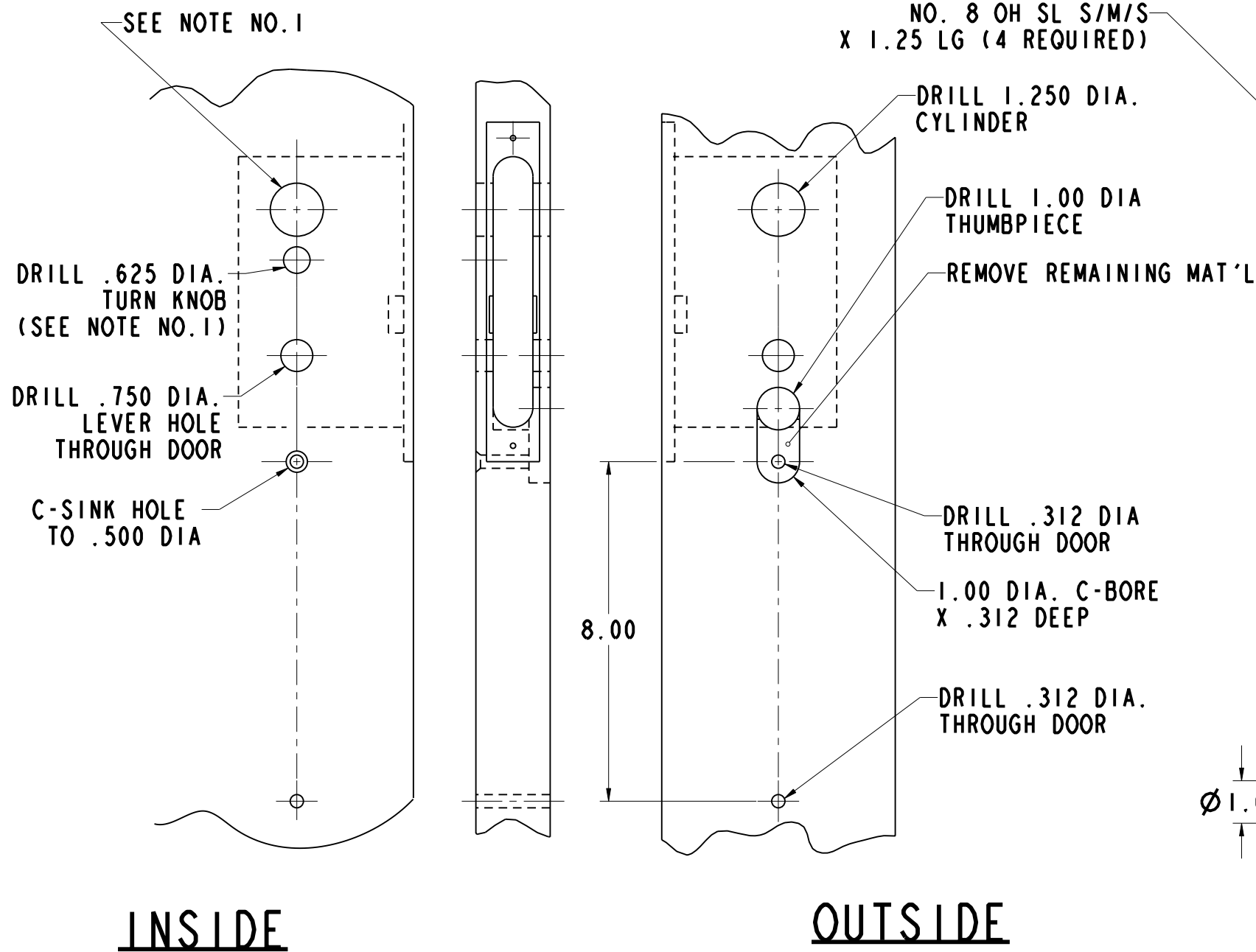
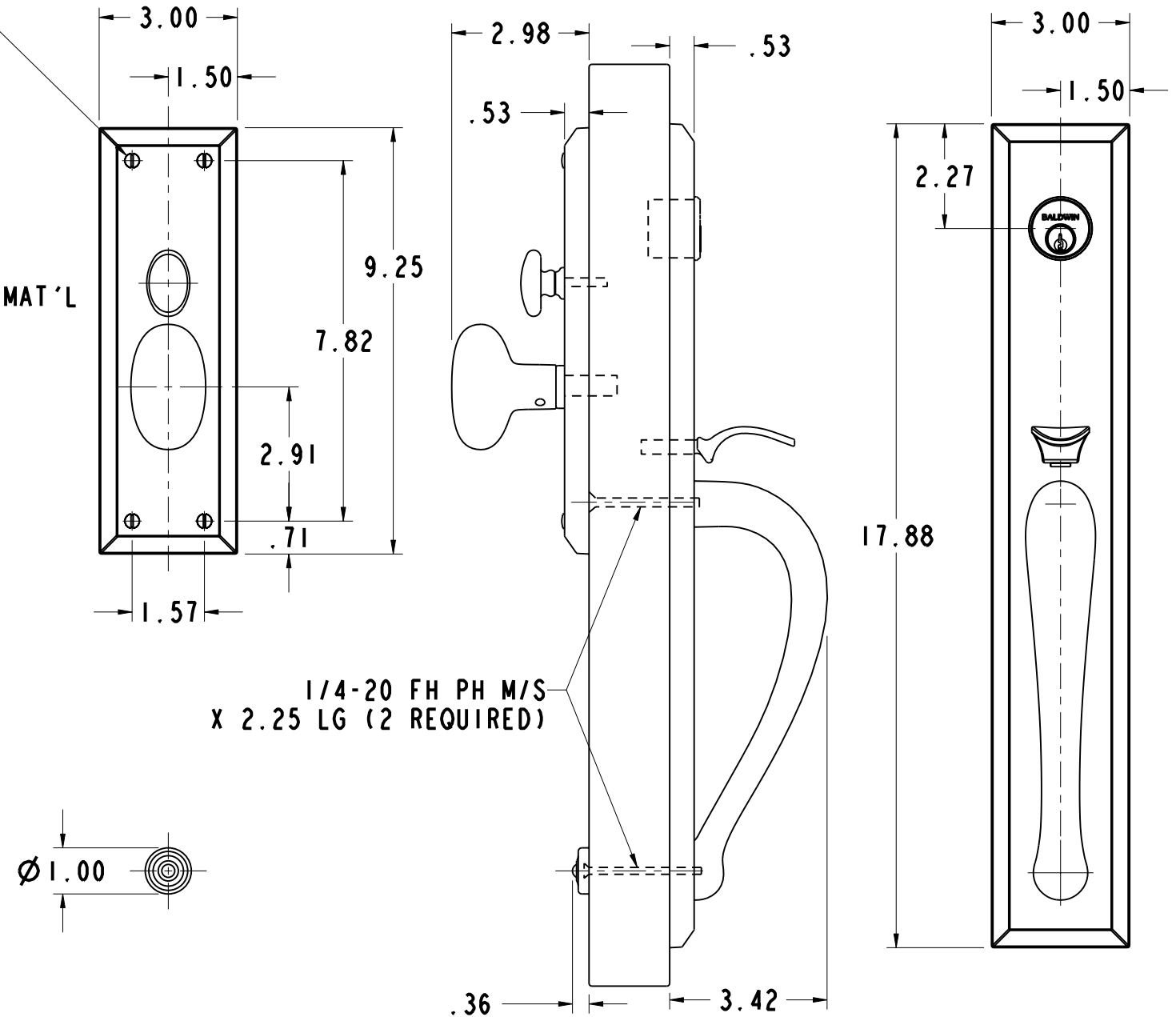


# DOOR DETAIL



# TRIM DETAIL



- NOTE:**
- 1) WHEN PREPARING DOOR FOR <sup>L</sup>/<sub>R</sub> DBL FUNCTION, OMIT DRILLING OF Ø .625 TURN KNOB HOLE (INSIDE). DRILL A Ø 1.250 CYLINDER HOLE INSTEAD, USING SAME CENTER LINE AS OUTSIDE CYLINDER HOLE.
  - 2) FOR ADDITIONAL LOCK AND DOOR CUTOUT DIMENSIONS, SEE APPROPRIATE LOCK TEMPLATE.
  - 3) DRILL ALL HOLES HALF WAY THROUGH DOOR UNLESS OTHERWISE SPECIFIED.
  - 4) INSTALLATION PLATES ARE NOT REQUIRED FOR THIS TRIM.

<p><b>BALDWIN</b> HARDWARE CORPORATION READING, PENNSYLVANIA</p>	<p><b>BLACK &amp; DECKER</b> COMPANY</p>
<p>TEMPLATE: NO VARIATIONS</p>	<p>TEMPLATE NO.</p>
<p>© 2006 BY BALDWIN HARDWARE CORPORATION</p>	<p><b>I-504</b></p>

DO NOT SCALE DRAWING

EFFECTIVE 10-22-07