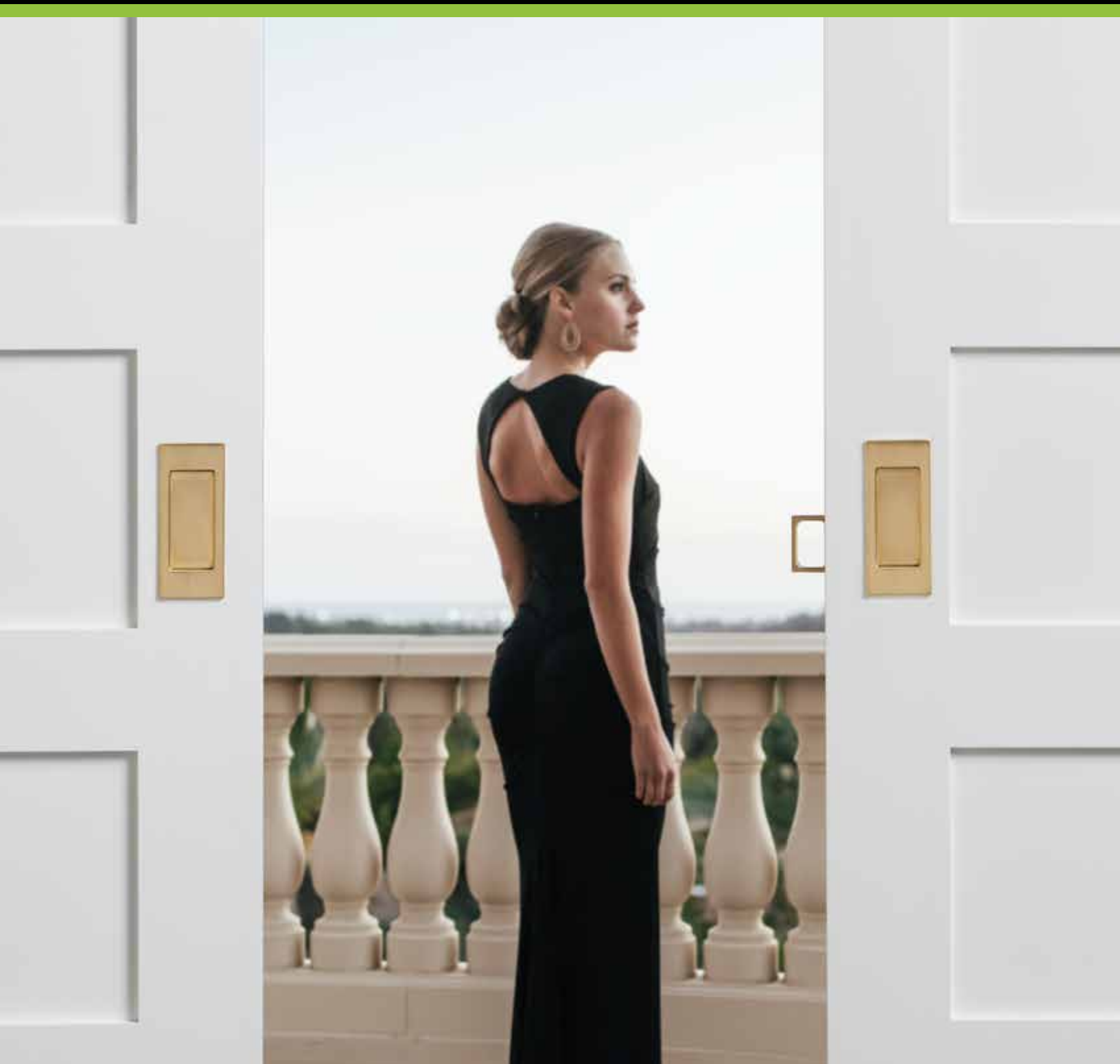


BALDWIN®

ESTATE™

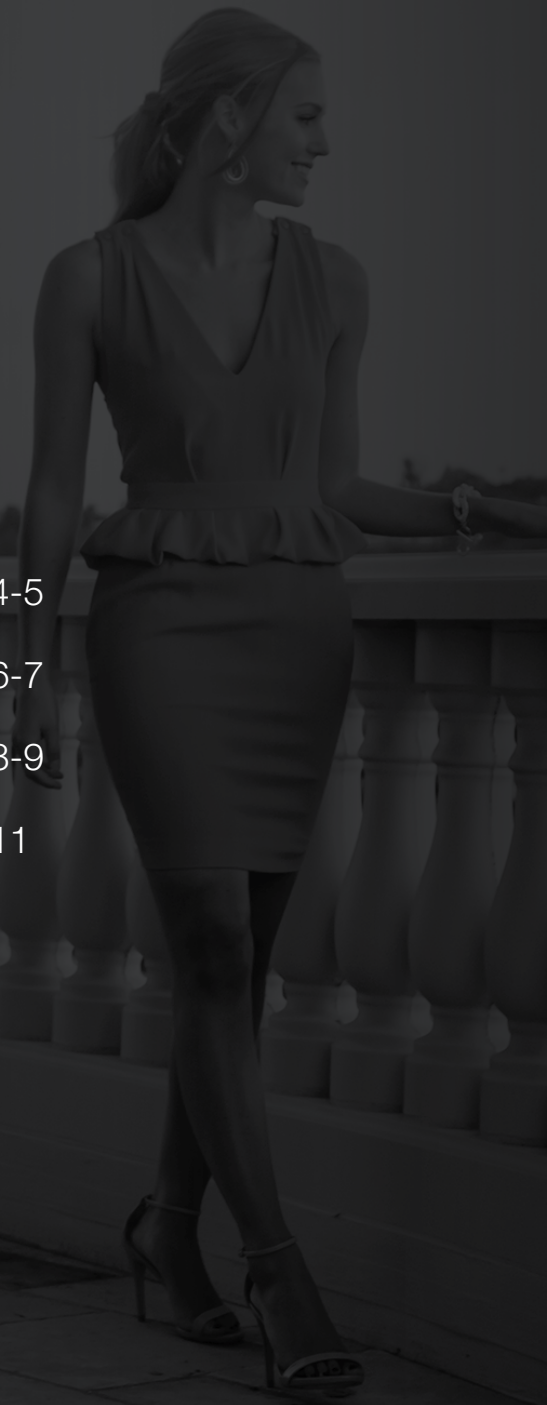


POCKET DOOR LOCK BROCHURE

BALDWIN®

TABLE OF CONTENTS

Boulder	4-5
Palo Alto	6-7
Santa Monica	8-9
Finishes	11



OWN IT.™

Introducing the new pocket door lock from Baldwin. Check out the Boulder, Palo Alto and Santa Monica large and small. Available in four styles, we have the pocket door lock for every design aesthetic. Baldwin offers these four styles in privacy, passage and keyed entry, in the highest quality; just what you expect from Baldwin. Unlock your design inspiration.



BALDWIN

BOULDER

The Boulder collection features rustic undertones, and is available in 20 finishes.



PD016.150.KC



PD016.150.KT



PD016.150.KE

PALO ALTO

The Palo Alto style blends soft lines with a contemporary flair. Available in 18 finishes.



BALDWIN



PD007.150.KC



PD007.150.KT



PD007.150.KE

SANTA MONICA

The Santa Monica style puts a visual emphasis on vertical and horizontal lines, with a focus on pure geometry without sacrificing comfort. It's available in both Large and Small varieties in all 20 finishes.



PD005.150.KC



PD005.150.KT



PD005.150.KE



PD006.150.KC



PD006.150.KT



PD006.150.KE

BALDWIN





BALDWIN

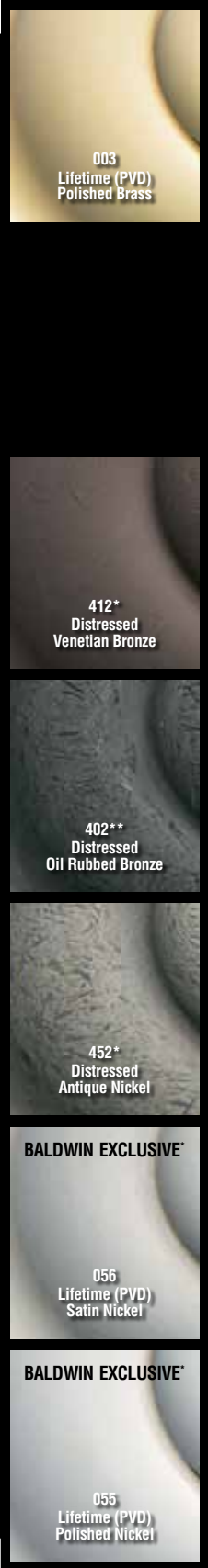
POCKET DOOR LOCK FINISHES

TIER 1



TIER 1

TIER 2



TIER 2

DISTRESSED FINISHES:

Not all hardware is available Distressed. The rugged tumbling process would damage some components. In cases where distressing is not possible, the equivalent non-distressed finish will be provided.

412 = 112

402 = 102

452 = 152 Antique Nickel with Matte lacquer (151 has gloss lacquer)

Hardware NOT available distressed includes:

- > All mortise locks, cylinders, latches, strikes
- > Certain levers & handleset trim (noted on those pages)

* HAND-RELIEVED FINISH VARIANCES:

(050, 060, 112, 151, 412, 452)

Product finishes which are HAND RELIEVED may vary in luster, hue and appearance as a result of handcrafted variances in the final finishing step.

** LIVING FINISH

(031, 033, 102, 402)

Product finishes which are LIVING will vary over time. They are not eligible for finish warranty.

Baldwin #	US #	BHMA #
030 =	3	605
031 =	3NL	-
040 =	4	606
050 =	5	609
060 =	6	608
102 =	10B	613
150 =	15	619
190 =	19	622
260 =	26	625
264 =	26D	626

BALDWIN®

19701 DA VINCI · LAKE FOREST · CALIFORNIA 92610

800.437.7448

BALDWINHARDWARE.COM