

# KEYLESS ENTRY

— BALDWIN QUALITY —



## Security & Convenience

- **One-touch locking with a motorized deadbolt**
- **Two customizable access codes**
- **Easy to install in a standard door prep**

**BALDWIN®**



8285.xxx.AC1  
Soho Deadbolt



8252.xxx.AC1  
Boulder Deadbolt



85386.xxx.ACRH (.ACLH)  
Soho Sectional Trim  
w/ 5485 Lever

Finishes



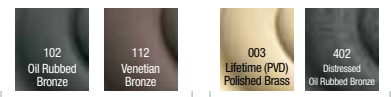
TIER 1

TIER 2



85353.xxx.ACRH (.ACLH)  
Boulder Sectional Trim  
w/ 5452 Beavertail Lever

Finishes



TIER 1

TIER 2

## Keyless Entry Deadbolt Features

- Easy Install in Minutes w/ Screwdriver
- Fits Standard Tubular Door Prep
- No Hard Wiring Required
- 2 Customizable User Codes with Easy Add & Delete
- 4 to 8 Digit Codes
- One Touch Locking
- Back-Lit Keypad for Increased Visibility
- Incorrect Code Lockout Feature
- Customizable Features
  - Automatic Door Locking after 30 Seconds
  - Door Locked / Unlocked led indicator
  - Audible beep for activation
- 4 AA Batteries
- Low Battery LED Indicator
- Tapered Deadbolt Design
- Protective Coated Keypad Preventing Wear & Discoloration
- Automatic Handing Feature
- Solid Forged Brass Trim

## Keyless Entry Deadbolt Specifications

<b>Function</b>	Single Cylinder Deadbolt
<b>Door Prep</b>	2 1/8" Bore, 1" Edge Bore
<b>Backset</b>	Adjustable 2 3/8" or 2 3/4"
<b>Door Thickness</b>	1.75" to 2.00"
<b>Cylinder</b>	5-Pin C-Keyway
<b>Faceplate</b>	1" Square Corner
<b>Strike</b>	Square Corner with reinforcing plate
<b>Latch</b>	1" Throw
<b>Bolt</b>	Brass, tapered w/ security pin
<b>Door Handing</b>	Automatic Handing

# BALDWIN®

# FAQ LIST

## KEYLESS ENTRY

---

### **Does this product require a different installation?**

No, fits a standard tubular deadbolt prep.

### **What is the estimated life of the batteries?**

Approximately 1 year of standard use.

### **Is this product offered in an emergency egress function?**

No, this product is not offered in an Emergency Egress function.

### **What cylinders are provided?**

Uses a standard Images cylinder with an extended tail piece.

### **What latches are provided with this product?**

The Keyless Entry Deadbolt products use a modified standard Images Deadbolt Latch that includes a tapered bolt & a modified latch cam.

### **Are there issues with the motorized bolt in regards to weatherstripping or warped door conditions?**

The tapered bolt design was implemented in order to address these conditions.

### **Can I get additional finishes or split finishes?**

No, these products cannot be extended into additional finishes or split finishes at this time.

### **What is the standard lead time for these products?**

There will be an extended lead time period for the product launch, but after that the Keyless Entry products will maintain a standard Images product lead time of 3 weeks.

### **Are Keyed Alike sets offered?**

No, not at this time. Product will need to be rekeyed in the field.

### **What is the Warranty?**

The Keyless Entry Deadbolts carry a Standard Images Mechanical & Finish Warranty & a 1 Year Electronic Warranty.

### **Are batteries included?**

No, AA batteries are not included & will need to be purchased separately.

## HOW TO ORDER

---

**To Order Only a Deadbolt, Simply Order  
& Specify the Finish:**



Example: 8285.150.AC1

**To Order Sectional Handleset, Order Both Deadbolt &  
Sectional Handleset Kit (with Handing) & Specify the Finish:**



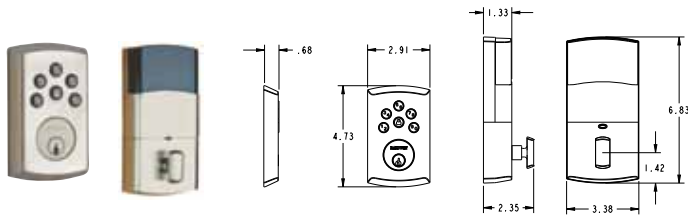
Example: 8285.150.AC1



+ 85386.150.ACRH

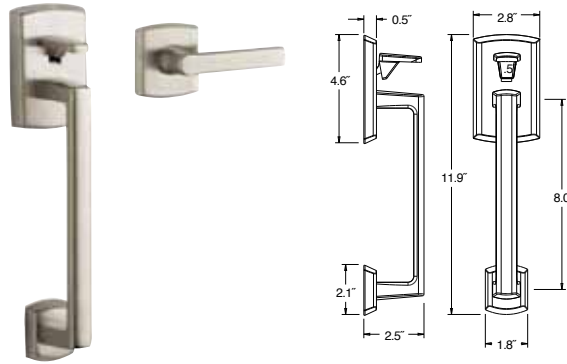
# BALDWIN

**SOHO  
DEADBOLT**

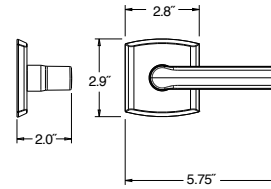


Item #	Description
8285.xxx.AC1	Deadbolt

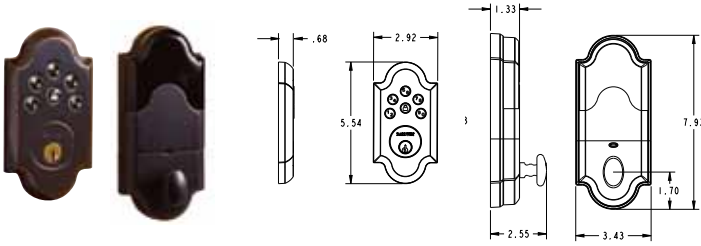
**SOHO  
SECTIONAL  
HANDLESET KIT**



Item #	Description
85386.xxx.ACRH (ACLH)	Sectional Entry Handleset Kit

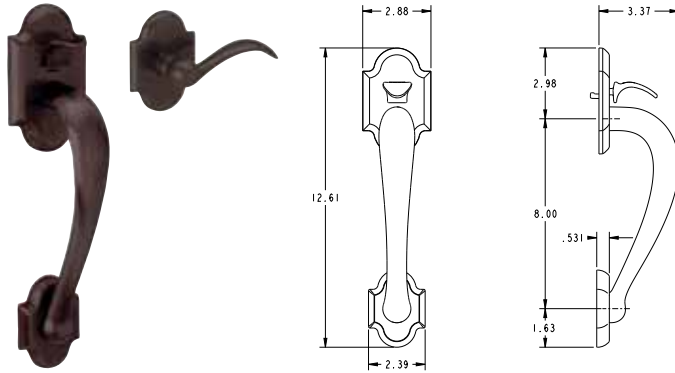


**BOULDER  
DEADBOLT**

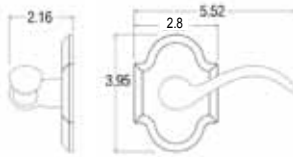


Item #	Description
8252.xxx.AC1	Deadbolt

**BOULDER  
SECTIONAL  
HANDLESET KIT**



Item #	Description
85353.xxx.ACRH (ACLH)	Sectional Entry Handleset Kit



**BALDWIN®**