

shopping list for needed supplies

- appropriate size aquarium
- appropriate food, dry and frozen
- décor
- water conditioner
- filter
- water test kit
- full spectrum lighting - T5 recommended
- net
- thermometer
- freshwater substrate
- heater
- hydrometer
- airstone
- air pump
- book about freshwater angelfish or discus

sources

Ask an associate about Petco's selection of books on Freshwater Angelfish and discus and the variety of Petco Brand products available for the care and happiness of your new pet. All Petco Brand products carry a 100% money-back guarantee.

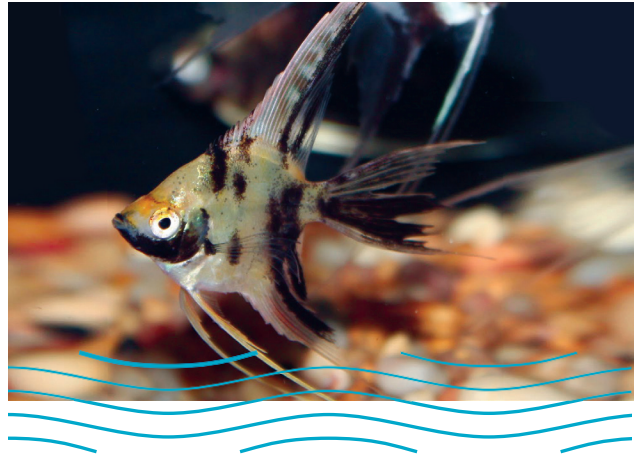
Because all aquatic life are potential carriers of infectious diseases, such as Salmonella, always wash your hands before and after handling your aquatic life and/or habitat contents to help prevent the potential spread of diseases.

Pregnant women, children under the age of 5 and people with weakened immune systems should contact their physician before purchasing and/or caring for aquatic life and should consider not having aquatic life as a pet. Go to the Centers for Disease Control at cdc.gov/healthypets/ for more information about aquatic life and disease. Go to petco.com/caresheet to download other helpful Care Sheets.

This care sheet can cover the needs of other species. See petco.com for more information.

Freshwater Angels and Discus

includes freshwater angels and discus species



Care Sheet

Almost all Freshwater Angelfish for sale today are captive-bred and come in a wide variety of colors and fin length. The body of a Discus is round and laterally compressed, an unusual characteristic. Although beautiful, Discus can be a challenge to care for.

Freshwater Angels and Discus facts:

average adult size:	4-10 inches long, depending on species
average life span:	depends on species
diet:	omnivore
minimum aquarium size:	29+ gallons, depending on species
water temperature:	72-82°F



Habitatitude.

Note: The information on this Care Sheet is not a substitute for veterinary care. If you need additional information, please refer to the sources on the following page or contact your veterinarian as appropriate.

petco 
where the healthy pets go

Developed with and approved by a qualified veterinarian.

Care Sheet

Freshwater Angels and Discus

includes freshwater angels and discus species



Developed with and approved by a qualified veterinarian.

diet

A well-balanced Freshwater Angelfish or Discus diet consists of:

- Food may be flaked, pellets, frozen or live.
- Angelfish enjoy the occasional treat of bloodworms or brine shrimp.
- Vary diet to ensure proper nutritional balance.

feeding

Things to remember when feeding your Freshwater Angelfish or Discus:

- Depending on size and species, feed small amounts 2-3 times a day, no more than fish can eat in 3-5 minutes.
- Thaw frozen foods before feeding.

housing

- Keep in an appropriate size aquarium. Provide plenty of substrate, rocks and hiding places. Discus require soft water, use appropriate water conditioner.
- **Stable water quality, water temperature, and pH levels are critical to the health of aquatic life. If you are unsure of your water quality or pH levels, Petco provides free water testing.**

characteristics

Angelfish are taller than they are long; like a well-planted tank with some open space in the middle for swimming. Discus are vibrantly colored and prefer the middle and lower areas of the aquarium; usually shy and peaceful.

habitat maintenance

Daily: check filter, water temperature and other equipment.
Weekly: check water quality at least once a week.
Monthly: change 10-25% of the total volume of water every 2-4 weeks, or as needed.
Provide stable decor or rocks for attachment by sessile corals.

compatibility

Discus are usually kept in same species aquariums. Angelfish may be aggressive to smaller fish such as guppies and neon tetras; can be come territorial. Angelfish should not be kept with aggressive tank mates such as large cichlids or large barbs.

signs of a healthy fish

- Clear eyes
- Healthy appetite
- Bright, even coloring
- Fins completely intact and undamaged

Avoid overcrowded conditions; they are a major cause of stress and disease. Maintain good water quality with regular water changes and adequate filtration.

red flags

- loss of appetite
- spots or fungus on body or mouth
- cloudy eyes or drop eye
- elevated scales
- frayed or discolored fins

If you notice any of these signs, test water quality and improve as necessary.

common health issues

Health Issue	Symptoms or Causes	Suggested Action
Fin rot	Frayed or disintegrating fins; the base of the fins usually reddens.	Improve water quality; commercial antibiotics may be effective.
Ich	White spots appear on fins and body; fish rubs against hard objects or swims awkwardly	Quarantine fish immediately; use a commercial ich remedy for at least two weeks.

test and treat water immediately; maintain proper diet.