

Congratulations you have just acquired a Mouse in the House™ cat toy. This is the most technically advanced cat toy ever produced.

It is designed to provide a stimulating environment for your cat even when you are not at home. This will challenge your cat's intelligence and exercise both his mind and body while you are away.

This programmable toy can activate itself at preset times and play with your cat when no one is available.

Mouse in the House™ actually responds to the cats actions and provides a true interactive experience for the cat. This toy contains a clutch mechanism that allows your cat to hold the mouse and prevent it from moving forward without damaging the mechanism. The mouse will continue to attempt to get away which will stimulate your cats hunting response even further. However, should your cat hold the mouse for too long, the unit will go into standby mode and will need to be reactivated manually (Master on-off switch) before the timer can be set again.

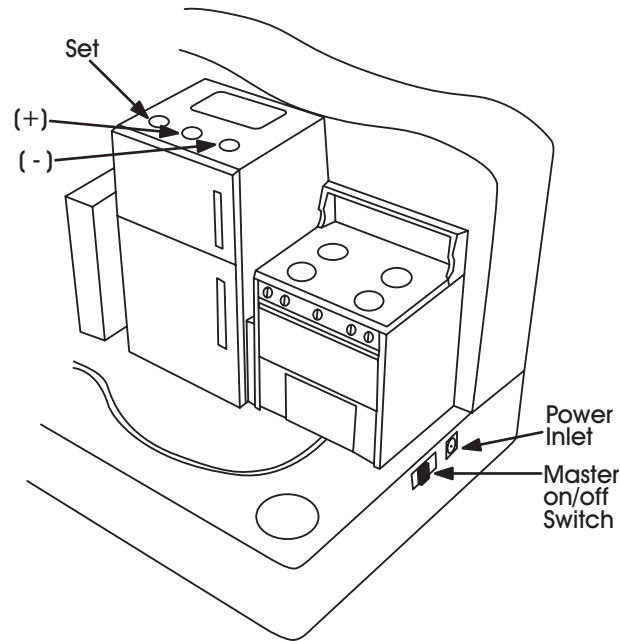
Caution: Mouse in the House™ is designed to stimulate the hunting response in cats. For this reason, the reaction to this toy by any animal in your household is completely unpredictable. You are strongly warned not to leave this toy alone with any animal until you have seen and can predict their behavior towards it.

It is recommended that you operate the toy under supervision until you have seen your cat's reaction to the toy and you can predict his behavior. Cat's that seem reluctant to interact with the toy can be encouraged by adding a small amount of catnip spray or oil to the fur on the mouse.

Cats that cease to play with the toy can have their interest rekindled by putting the toy away for a few weeks and then having it reintroduced in a different location in the house.

To operate Mouse in the House™:

1. Turn on 'Master On' switch.
2. For instant operation, push the red button or teach your cat to do it.
3. For Timer operation, push the 'Set' button on top of the refrigerator. As each digit blinks push the '+' button to increase the number of minutes for that digit. The '-' button decreases the digit. Push the 'Set' button to lock that digit and move to the next digit. Continue through all three digits. The toy is in Timer mode when the LED on the stove is activated.



To install Mouse in the House™:

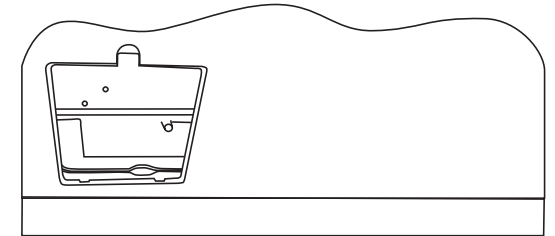
1. Pick a safe place out of traffic with plenty of area for your cats to play. Position the toy with its back against a wall or a piece of furniture so the device cannot tip over backwards.
2. For AC operation insert the provided adapter into the power inlet on the toy and to an appropriate AC outlet. Be sure to find a safe path for the electrical cord. Some cats find these irresistible. However, if the cord should be chewed, be assured that there is no danger to your cat as this toy operates on a harmless 4.5 volts, not enough to give your cat even the mildest of shocks.

During introduction, get acquainted and training periods with your cats setting the timer for a single minute is helpful and useful. Setting the timer for an hour or longer is appropriate to keep the cats interested when you will be away.

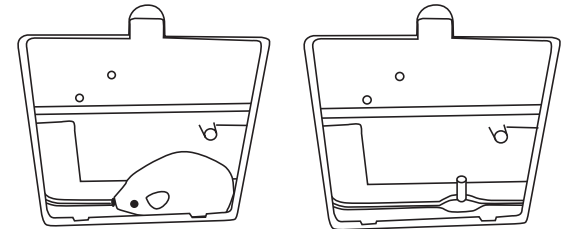
Replace the mouse as soon as it shows wear. A damaged mouse can jam on the track and cause malfunction.

To replace the mouse:

1. Open the door on the back of toy. Manually (Red Button) activate the toy, when the mouse is over the wide spot in the track turn off the Master On/Off Switch.



2. Lift out the old mouse and insert a new one on the post ensuring that the washer on the mouse mount is below the track.



3. Close the door and turn the toy on.

Mouse in the House should be seen as a valuable addition to a well rounded supply of toys for your house cat that includes a good supply of interactive toys for you to play with your cat.

Find the entire line of toys from Cat Dancer Products at enlightened pet stores everywhere:

- **Cat Dancer®**-The original interactive cat toy played with and loved by millions of cats around the world.

- **Cat Dancer® Compleat**-A Cat Dancer with a paw shaped mounting patch to hold Cat Dancer when you are away.

- **Cat Charmer®**-A safe colorful toy for all kittens, cats and kids.

- **Catnip Cat Dancer®**- The original interactive cat toy with a mouse shaped handle that is loaded with all the scent from 100% catnip oil.

Not intended for children under 3 years old.

www.catdancer.com



©2007 Cat Dancer Products Inc.

Made in China for:
Cat Dancer Products Inc.
6145 Green Valley Road
Neenah, WI 54956 USA

International Patents Applied For.



Automatic Cat Toy

*Don't leave
your cat alone--*

*Leave a
Mouse in the House!*