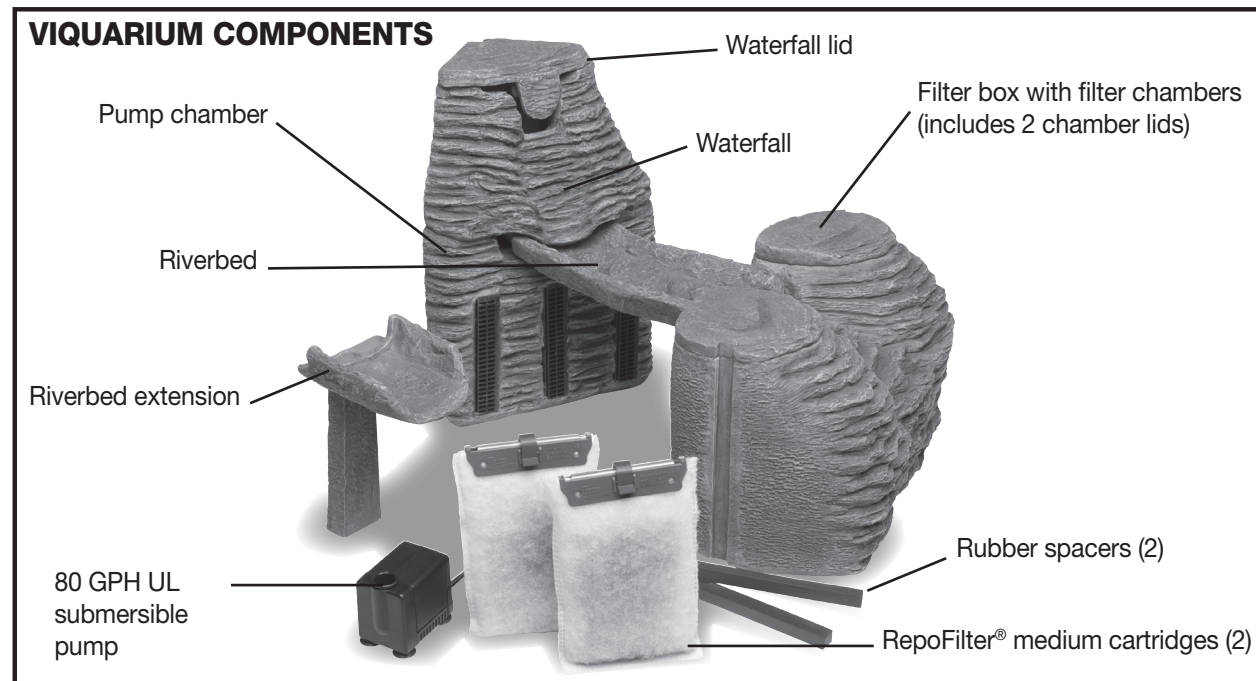
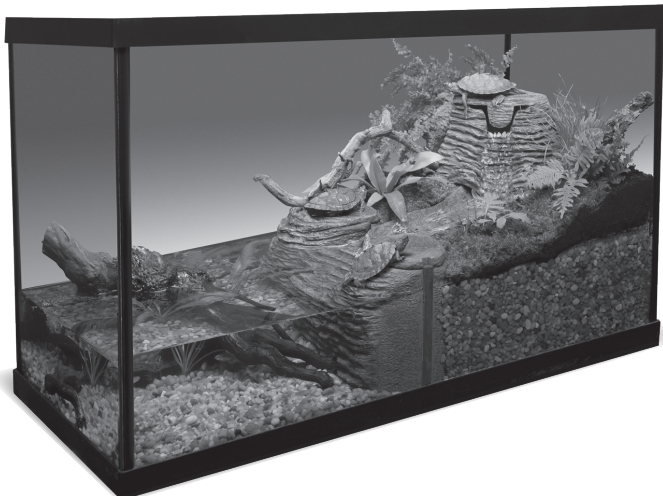


Viquarium™

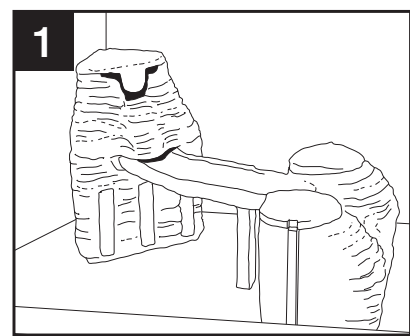
The Tetrafauna® Viquarium™ will convert an ordinary aquarium into an aqua-terrarium, a combination of an aquarium and terrarium, which has a dry land part for terrestrial animals, a water section for aquatic reptiles, amphibians and fish, and a divider part which allows amphibian animals to easily move from one section to the other.

A diverse group of animals can be maintained in Tetrafauna's Viquarium. In the water section, fish and aquatic animals, such as African Clawed Frogs, will be at home. On the land part, animals which normally live near water or those that require a high degree of humidity can be kept. Anoles and some species of geckos will do fine here, as will many tree frogs and poison dart frogs. But the most interesting group of animals that can be kept in the Viquarium are those amphibians which divide their time between life in the water and life on land. (i.e. aquatic turtles, newts, etc.)

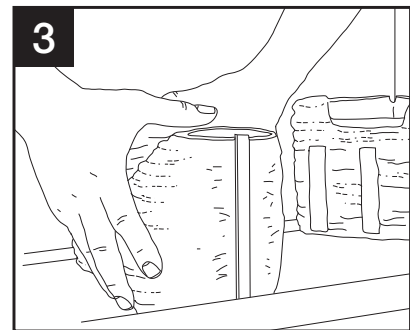
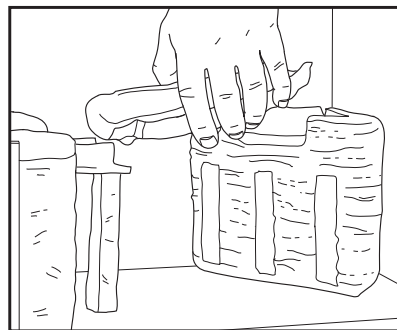
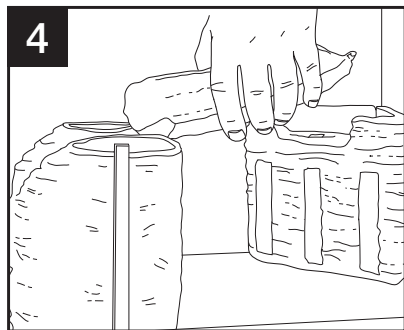
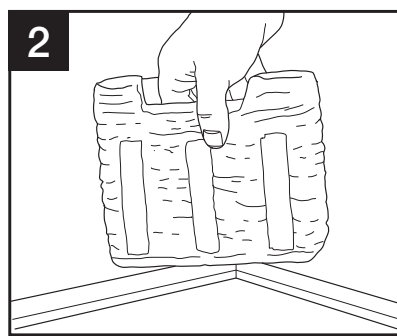
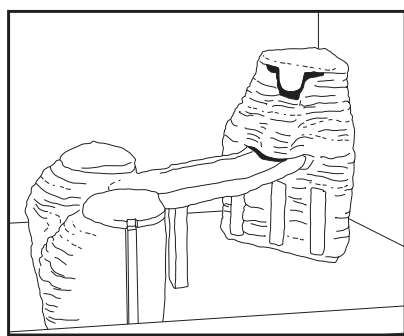
Tetrafauna's Viquarium will fit most aquariums that are at least 24" long, have a width of 12"-13", and a height of 16" or more. Most standard-sized 20 gal high, 29 gal, 40 gal and 55 gal tanks can be used.



HOW TO ASSEMBLE TETRAFAUNA'S VIQUARIUM

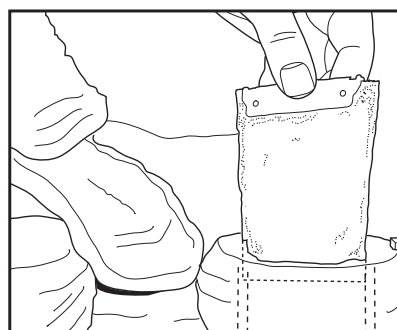
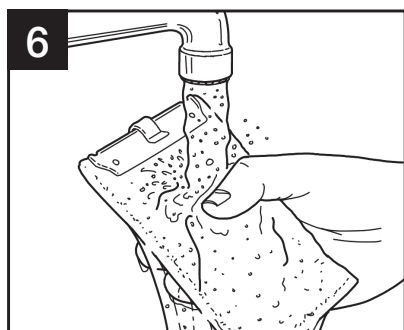


Decide whether the land portion of the Viquarium should be on the right or left side of the aquarium as seen from the front. The Viquarium can be assembled either way.



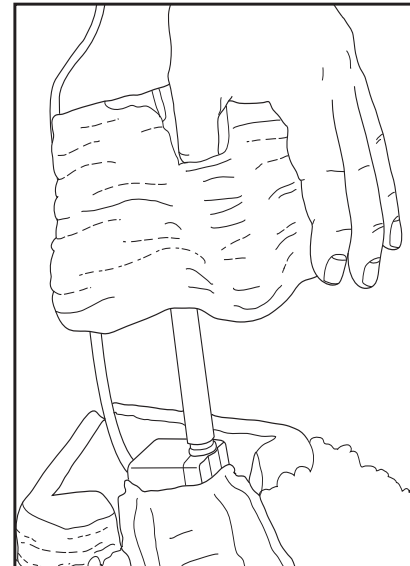
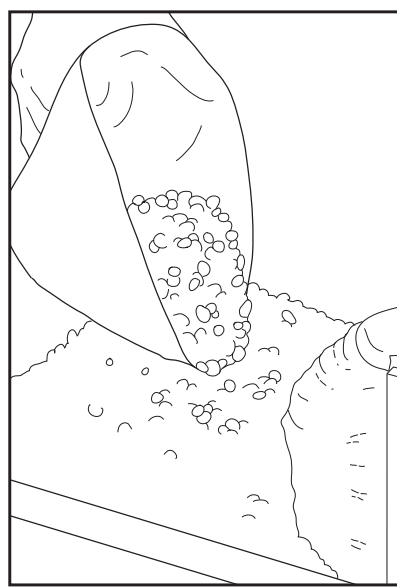
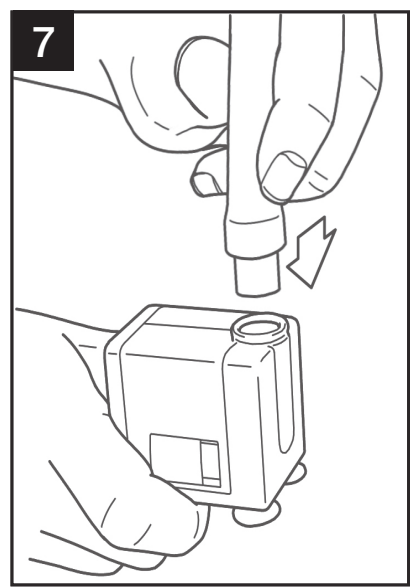
Place the filtration box into the tank (inserting sideways) and place at the bottom of the tank (or Viquarium) with the rock facing the water section.

Using the alignment posts, position the riverbed section between the pump chamber and the filtration box. Then turn the filtration box to correctly position it in the tank. **Note**—If you decide to have a larger land area, add the riverbed extension. Align holes and posts on both ends. Assemble the river section as shown.

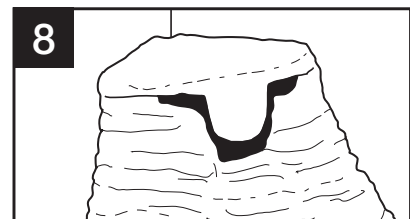


There may be small gaps on each end of the filtration box and the tank. Aquariums differ in width depending on the manufacturer. To bridge that gap, use the appropriate spacer(s) to seal and lock the filtration box in place.

Remove the filter cartridges from the packaging. Rinse them under cold tap water to remove carbon dust, and place them into the slot of each chamber. Push the cartridge until it hits the bottom and place lids to close chambers.



Place the outlet on pump and then attach it to the waterfall unit. **Tip**—Lubricate the pump outlet with water to ease assembly. Place the waterfall unit on top of the pump chamber. Make sure the pump lies vertically in the chamber. **Note**—Make sure the waterfall sits securely on top of pump chamber. Do not plug in the water pump yet. **Note**—The waterfall has a built-in fogger platform if you want to use a fogger unit (fogger not included). Follow fogger manufacturer instructions.



Place waterfall lid.

LAND SECTION

- Verify that the Viquarium assembly has not shifted position within the tank. Then carefully fill the land portion with washed, coarse gravel (not included), with a pebble size of about 3/8"-1/2", up to about 1/4" from the top of the filtration box and the top of the walls of the riverbed. Depending upon the size of the land area, between 45 to 65 lbs are needed.
- The gravel can be covered with dried moss (available at most dealers). If desired, you can collect some patches of live moss. Piece together to form a continuous carpet on top of the gravel; it gives a more natural appearance.
- For decorating the land area, many species are available in garden shops and flower centers. Obviously only plants that thrive in a very humid environment should be considered. Most ferns, many types of ivy, pothos and philodendron are fine plants for the Viquarium. Shake off most of the soil and plant directly into the gravel. For other decorations, rocks, small pieces of driftwood and tree branches (cut to the appropriate size) can be used. Another option is to use artificial plants. With little imagination, very striking set-ups can be achieved.

WATER SECTION

- As in an aquarium, the bottom of the Viquarium's water section should be covered with a layer of gravel. Use fine or medium gravel. **Note**—Do not use the coarse gravel used in the land area, as it will trap too many food particles.
- Fill the aquatic section with tap water. As the water section is filled, water will also seep through the openings in the wall and into the gravel of the land area. This is normal. During the operation, the water will be drawn through the filter cartridge in the filter chamber. If there is a small amount of water bypassing the filter chamber, it will still be filtered through the gravel in the land area and will help prevent stagnant areas in the gravel. Fill the water section using the min and max water level lines marked on the outer sides of the pump chamber as a guideline.
- Now you can plug in the water pump.
- Aquatic and bog plants (available in most dealers) can be planted here. In addition, any decoration which is safe for an aquarium may be used.

*Replace filter cartridges every four weeks or sooner for optimal performance.

LIMITED TWO-YEAR WARRANTY

Tetra® warrants the products listed below against defects in material and workmanship for the specified number of years from the date of original purchase.

Viquarium 2 years

If the product exhibits such a defect, Tetra will repair or replace it without cost for parts or labor. The product must be shipped postpaid to Tetra (3001 Commerce Street, Blacksburg, VA 24060). Proof of purchase is required. You are responsible for proper wrapping and the payment of shipping.

This warranty does not cover damage caused by accident, misuse, abuse or failure to follow product instructions. All implied warranties, including any implied warranty of merchantability or fitness for any purpose, are limited to two years from date of original purchase.

In no event will Tetra be liable for consequential damages resulting from the use of this product. Some states do not allow the exclusion or limitation of incidental or consequential damages, so the above limitation may not apply to you.

This warranty provides specific legal rights. You may have other legal rights that vary from state to state.

IMPORTANT SAFETY INSTRUCTIONS

READ AND FOLLOW ALL SAFETY INSTRUCTIONS.

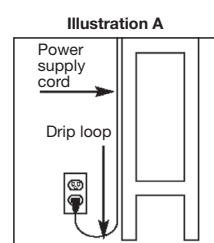
WARNING

Special care should be taken to avoid possible electric shock, since water is employed in the use of aquarium equipment. Do not attempt any repairs by yourself; return the appliance to an authorized service facility for service or discard the appliance.

WARNING

To guard against injury, observe basic safety precautions, including the following:

- Carefully examine the appliance after installation.
- Do not operate any appliance if it has a damaged cord or plug, or if it is malfunctioning, or if it has been dropped or damaged in any manner.
- To avoid getting the appliance plug or receptacle wet, position the aquarium to the side of a wall-mounted outlet in order to prevent water from dripping onto the plug or outlet. Arrange a "drip loop" for each cord connecting an aquarium appliance to an outlet. (See Illustration A.) The "drip loop" is the part of the cord below the level of the outlet (or if using an extension cord, below the level of the connector) that prevents water from traveling along the cord and coming in contact with the outlet.
- If the plug or outlet should get wet, don't unplug the cord. Disconnect the fuse or circuit breaker that supplies power to the appliance. Once the power has been disconnected, unplug the cord and examine it for the presence of water in the outlet.
- Unplug appliance before cleaning, and prior to disconnecting or attaching parts. Never pull the cord to remove the plug from the outlet. Grasp the plug and pull to disconnect.
- Do not use an appliance for anything other than its intended use. Do not use attachments that are not recommended or sold by the manufacturer; they may cause an unsafe condition.
- Do not install or store the appliance where it will be exposed to the weather or to temperatures below freezing.
- If an extension cord is necessary, use a cord with a rating that matches or exceeds the rating of the appliance. A cord rated for fewer amperes or watts than the appliance rating may overheat. Arrange the cord so that it will not be tripped over, and that it will not be pulled in any way.
- This appliance has a polarized plug (one blade is wider than the other). As a safety feature, this plug will fit in a polarized outlet only one way. If the plug does not fit fully into the outlet, reverse the plug. If it still does not fit, contact a qualified electrician. Never use with an extension cord unless the plug can be fully inserted. Do not attempt to defeat this safety feature.
- This product is not a toy. Supervise children closely when they are near or using the appliance.



SAVE THESE INSTRUCTIONS.

Covers for the Viquarium

Cover the Viquarium with a well-fitting screen (available at your pet dealer). Some models come with cut-outs for routing electrical cords through – a most convenient feature. Screens provide ventilation, but also cause heat loss. Instead, experiment by partially covering the screen with solid glass or plastic sheet. Solid or hinged pieces of may be used to cover the Viquarium, but other means of ventilation must be provided. Purchase a small Whisper® air pump with the appropriated tubing length. Run the air line into the Viquarium and plug in the pump. Even the smallest air pump can provide enough renewed air in a tank every 1-2 hours.

Lighting

Lighting is important for your Viquarium. A light fixture with the adequate light spectrum is required for keeping most amphibians, as well as for growing plants and mosses. Many turtles and other reptiles require a heat radiating light source. A combination of UV and incandescent light is ideal. Ask your dealer to recommend the best lighting that suits your needs.

Heating

The temperature to be maintained in the Viquarium depends entirely upon the species of fish and other animals to be kept. If a heat radiating incandescent light is used, it is not always necessary to install a separate heater for the aquatic portion of the Viquarium. However, if suitable temperature is not achieved with a heat lamp, a submersible heater like Tetrafauna's Aquatic Reptile Heater may be used. Ask your dealer.

MAINTENANCE

Land Section

As in any enclosure where animals are kept, cleanliness is an important part of your maintenance. Droppings and uneaten food must be removed on a regular basis. Climbing animals like tree frogs frequently defecate on leaves and stems of plants, as well as on the Viquarium glass walls. A wet sponge and/or paper towel can be used to clean up. If live plants are used, there may be an occasional dead leaf that should be removed, and vigorously growing plants may have to be pruned or replaced with smaller ones.

Water Section

The water section should be maintained much like an aquarium. The filter cartridges should be changed once every month or sooner if the filter is clogged or the animal population is high. Also, be sure to keep the front slots of the filter chamber clear of debris. This can cause the gravel portion of the land section to dry out, affecting the efficiency of the water pump. If debris builds up, it can easily be removed. Simply pull the cartridge out of the chamber and push a butter knife through the intake slots.

Avoid overfeeding. Any food that is not consumed quickly by the fish or other animals will rot and cause pollution. Remove uneaten food promptly and feed less next time.

Partial water changes of 25%-50% are highly recommended and should be made weekly, even though the water tends to be very clear in the Viquarium. Dissolved pollutants, resulting from the metabolism of fish and other animals, plus the increasing concentrations of minerals and salts in mineral salts in the water due to evaporation, will create unsuitable conditions for the animals in the long run. This can be prevented with regular partial water changes.

***Tip**—Use Tetrafauna's AquaSafe® for Reptiles and Amphibians every time water is added to the tank.

Questions? Problems? Missing Parts?

Before returning the product, please call our Customer Care Department at 800-423-6458, Monday–Friday 7:30 a.m. to 5:30 p.m., Eastern USA Time or email us at consumer@tetra-fish.com. Our Customer Care Department is here to provide assistance to help you solve your problem.



© 2010 Tetra Holding (US), Inc.
3001 Commerce St., Blacksburg, VA 24060-6671, USA
www.tetrafauna.com • 1-800-526-0650

Tetra®, TetraFauna®, AquaSafe® and Viquarium™ are registered trademarks of United Pet Group, Inc. or one of its subsidiaries.

MADE IN CHINA.