

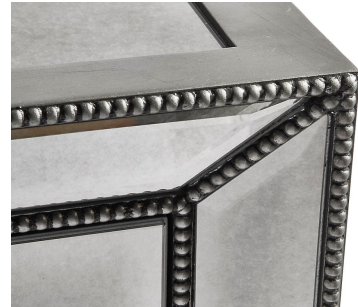
Z GALLERY

OMNI COLLECTION



Our Omni collection features a multi-step finishing process that starts with hand-applied silver leaf. Silver leafing is a unique finish where thin sheets of silver (no larger than 6") are applied by hand, producing a shine unparalleled to any painted finish. The hairline markings and wrinkled effect only add to the beauty. Each piece is then glazed and coated with a protective lacquer. To compliment the shiny finish the mirror features subtle antiquing.

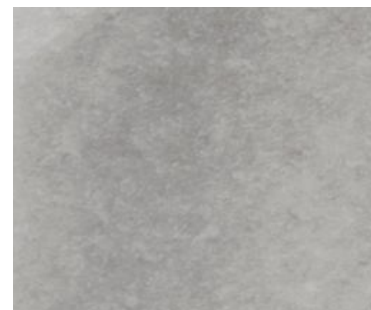
CARE INSTRUCTIONS: Dust regularly with a soft, dry cloth. Avoid the use of furniture polish, harsh chemicals or abrasive cleaners. Dry spills immediately with a clean cloth. Protect surfaces from heat and moisture by using coasters, pads or cloth under drinking glasses or hot dishes.



Silver beaded trim is accented with a black rub-through finish giving depth to the piece.



The hairline markings and wrinkled effect are a part of the natural beauty of silver leafing finishes.



Mirror pieces have a subtle antiquing that compliments the shiny finish.