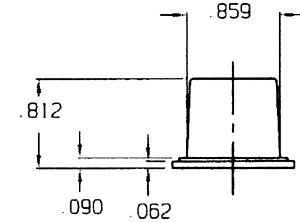
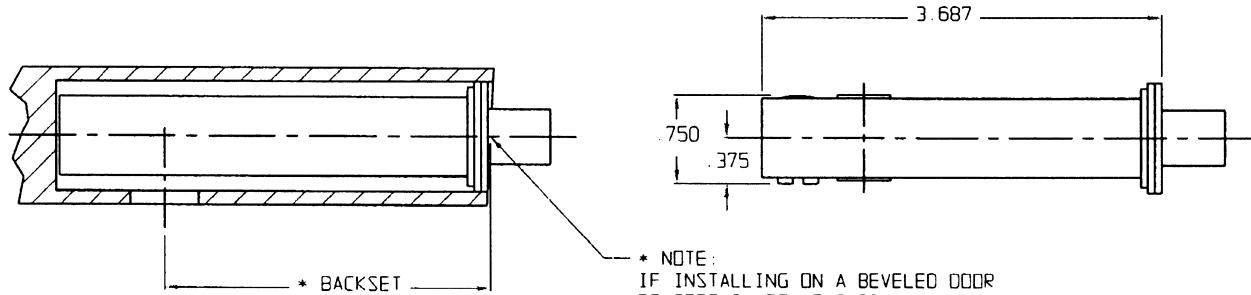


# DOOR DETAIL

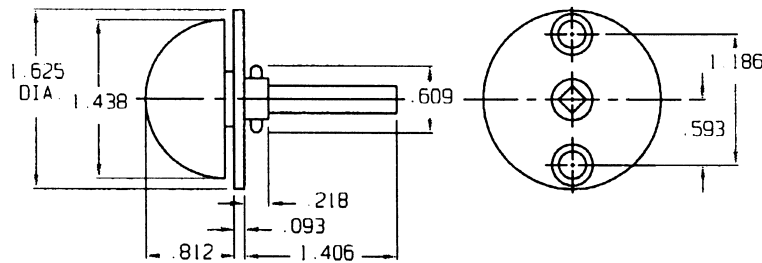
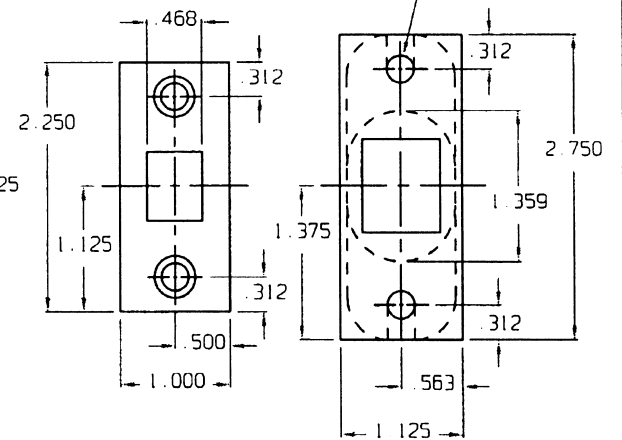
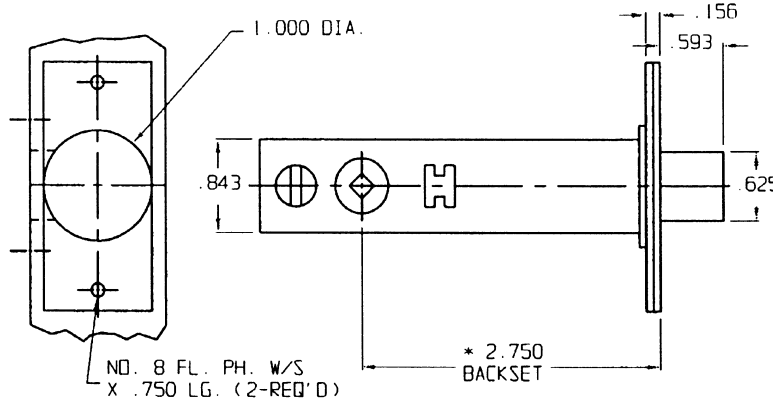
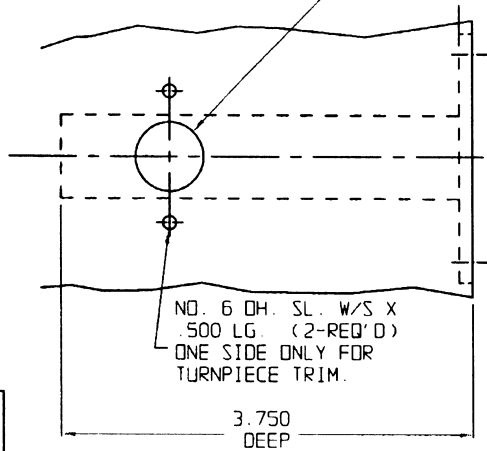
# BOLT DETAIL



\* NOTE:  
IF INSTALLING ON A BEVELED DOOR  
BE CERTAIN TO MEASURE 2.75 BACKSET  
FROM THE CENTER OF THE BEVEL.

NO. 8 FL. PH. W/S  
X .750 LG. (2-REQ'D)

DRILL .625 DIA ONE SIDE ONLY  
FOR TURN PIECE TRIM. DRILL  
HALFWAY THRU DOOR.



DO NOT SCALE DRAWING

**B. BALDWIN**

0413 MORTISE BOLT

TEMPLATE NO. VARIATIONS

TEMPLATE NO.

© 1988 BY BALDWIN HARDWARE CORPORATION

A172 B

EFFECTIVE 2-3-97

IMPORTANT NOTE:

IF EMERGENCY TRIM IS USED, THE TURN PIECE SPINDLE MUST BE CUT TO EXTEND NO FURTHER THAN HALFWAY THRU THE BOLT REFER TO SPECIFIC EMERGENCY RELEASE TRIM TEMPLATE FOR FURTHER DETAILS.