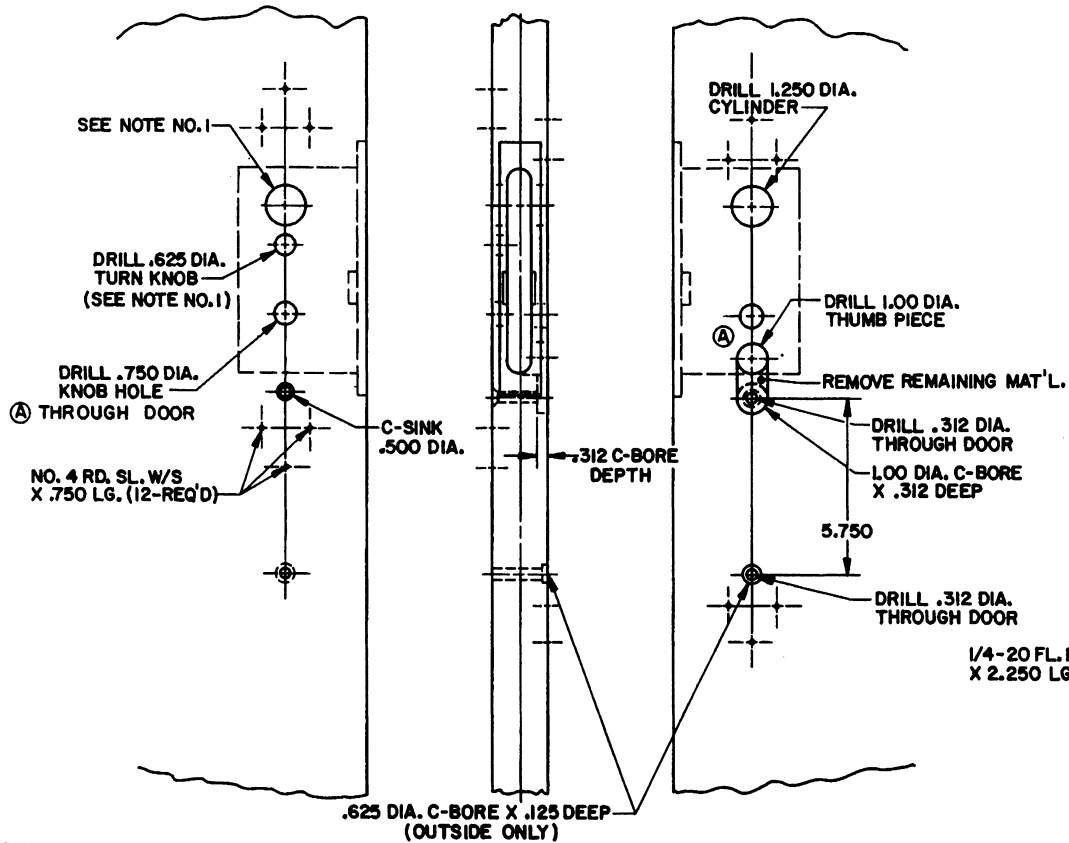


DOOR DETAIL



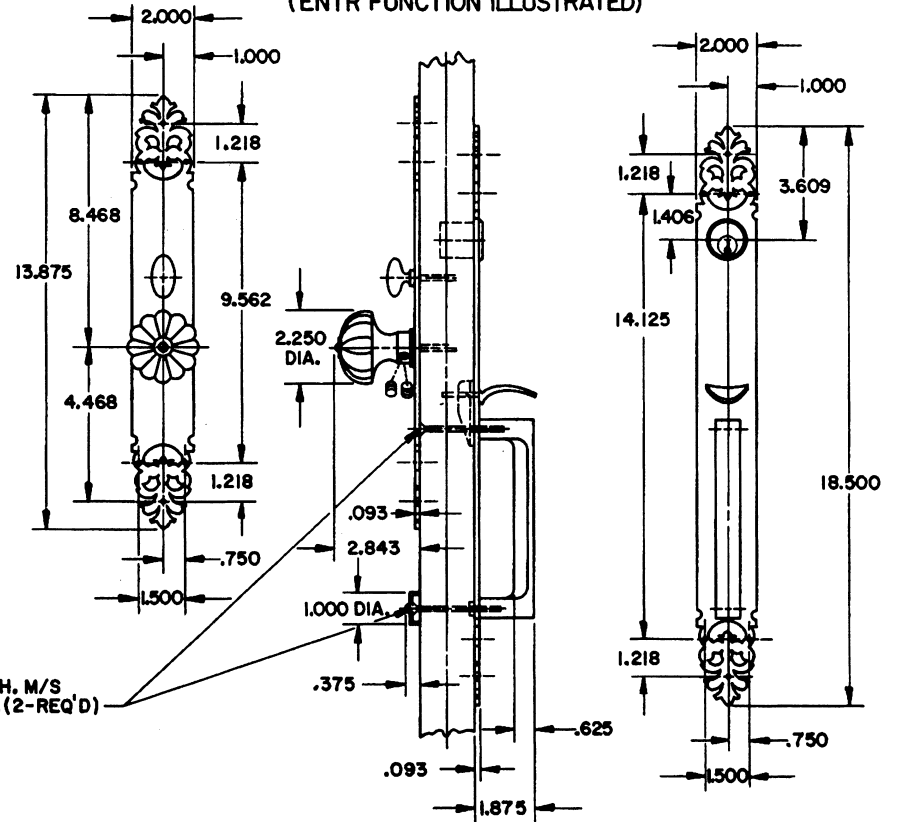
INSIDE

OUTSIDE

NOTE:

- 1.) WHEN PREPARING DOOR FOR DBLC FUNCTION, OMIT DRILLING OF .625 DIA. TURN KNOB HOLE. (INSIDE) DRILL A 1.250 DIA. CYLINDER HOLE INSTEAD, USING SAME CENTER LINE AS OUTSIDE CYLINDER HOLE.
- 2.) DRILL ALL HOLES HALF WAY THROUGH DOOR UNLESS OTHERWISE SPECIFIED.
- 3.) FOR ADDITIONAL LOCK AND DOOR CUTOUT DIMENSIONS, SEE APPROPRIATE LOCK TEMPLATE.
- 4.) INSTALLATION PLATES ARE NOT REQUIRED FOR THIS TRIM.

TRIM DETAIL (ENTR FUNCTION ILLUSTRATED)



EFFECTIVE: 1-31-91 R.M.-8

BALDWIN	
6564 PRINCETON TRIM	
TEMPLATE NO. VARIATIONS	TEMPLATE NO.
	I564-A

DO NOT SCALE DRAWING

© 1990 by Baldwin Hardware Corporation