



Indoor Bark Control

Operating Guide

Please read this entire guide before beginning.



Stops Excessive Barking with Sound Only He Can Hear

Thank you for choosing PetSafe®, the best selling brand of electronic training solutions in the world. Our mission is to be the most trusted brand in the pet ownership experience. We want to ensure your pet's safety by providing you with the tools and techniques to successfully train your pet. If you have any questions, please contact the Customer Care Center at 1-800-732-2677 or visit our website at www.petsafe.net.

To get the most protection out of your limited warranty, please register your product within 90 days at www.petsafe.net. By registering, you will enjoy the product's full warranty and should you ever need to call the Customer Care Center, we will be able to help you faster. Additionally, you will not have to save your product receipt as registering serves as proof of purchase. Most importantly, PetSafe will never give or sell your valuable information to anyone.

Table of Contents

| | |
|---|---|
| Features..... | 3 |
| How the PetSafe® Indoor Bark Control Works..... | 3 |
| Key Definitions..... | 4 |
| Setup..... | 4 |
| To Insert and Remove the Battery..... | 4 |
| Battery Life..... | 5 |
| LED..... | 5 |
| What to Expect During Use of the Indoor Bark Control..... | 5 |
| Eliminating Unwanted Behavior..... | 5 |
| Regular Maintenance..... | 6 |
| Frequently Asked Questions..... | 6 |
| Terms of Use and Limitation of Liability..... | 7 |
| FCC..... | 8 |
| Product Warranty..... | 8 |

Features

- Automatically corrects excessive barking
- Activated automatically or manually
- No receiver collar needed
- Detects barks up to 25 feet away

How It Works

When the Indoor Bark Control unit is within range of a barking dog, an internal microphone picks up the sound. The unit automatically emits an ultrasonic tone that can be heard by dogs but is silent to humans. Startled by the high-pitched tone, the dog should stop barking. In time it will associate its bark with this unpleasant noise. When the dog stops barking, the ultrasonic tone also stops. It is effective up to 25 feet.

You may also use the Indoor Bark Control unit as a remote trainer. When your pet exhibits inappropriate behavior, press the manual control button on top of the unit to emit an ultrasonic tone. The dog should be startled by the high-pitched tone and stop his poor behavior.

Note: If the dog is deaf or hearing impaired, he may not react to the Indoor Bark Control.

Caution: Humans cannot hear the ultrasonic sound; however, precautions should be taken when using the Indoor Bark Control.

- **Humans should also avoid standing very close to the Indoor Bark Control when it is operational.**
- **Not for use by children.**
- **This device is intended for use only with dogs. Never attempt to use it for any purpose not described in this manual.**
- **All pets in hearing range will be affected by the ultrasonic tone.**
- **Never use the PetSafe® Indoor Bark Control to correct or eliminate any form of aggressive behavior. We recommend you contact your local veterinarian or professional trainer to determine if your pet might be aggressive.**
- **For best results, use indoors. For helping an outdoor dog with a barking problem, please visit www.petsafe.net for information on PetSafe Outdoor Bark Control products or call our Customer Care Center at 1-800-732-2677.**

Key Definitions

Microphone: Detects barking up to 25 feet away.

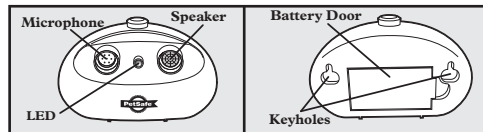
LED: Lights whenever Indoor Bark Control is activated. Also blinks to show low battery status.

Speaker: Produces the ultrasonic sound.

Button: Manual control activates an ultrasonic tone on demand

Battery Door: Used to enclose the 9v battery

Keyholes: Provision for wall mounting

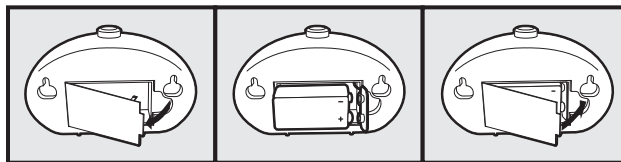


Setup

The PetSafe® Indoor Bark Control should be placed facing the dog, within a range not to exceed 25 feet. For best results, the area between the Indoor Bark Control and the dog should be free of any large obstacles.

To Insert and Remove the Battery

1. The PetSafe Indoor Bark Control requires a 9-volt battery (not included).
2. The battery door is located on the back of the unit. Pull the battery door open.
3. Install the 9-volt battery with the positive side oriented as shown.
4. Replace the battery door by positioning the top edge, and snap the bottom of battery door into place.



Battery Life

Average battery life is 2 months, depending on how often the dog barks. To conserve battery life, remove the battery when the Indoor Bark Control is not in use.

LED

The LED indicator will alert you of low battery status. The LED will flash red once every 6 seconds.

What to Expect During Use of the Indoor Bark Control

Place the PetSafe® Indoor Bark Control within 25 feet or less of the dog. When the microphone picks up the constant bark of the dog, it will emit a 2-second high-pitched ultrasonic tone. While the tone cannot be heard by humans, it should startle the dog. Most dogs will understand very quickly that the Indoor Bark Control is disrupting their urge to bark and will relax and stop barking.

You should notice a reduction in the dog's barking within the first 2 weeks that the Indoor Bark Control is in use. Please note this product may not work on deaf or hearing impaired dogs.

Excessive barking can cause a real strain on your family's relationship with your pet. Please visit www.petsafe.net to view other customized solutions to the problem of too much barking.

Eliminating Unwanted Behavior

To eliminate other unwanted behavior (i.e. jumping on furniture), the manual activation function can be used.

As soon as your pet begins the earliest sign of misbehavior, press the manual control button. For example, if you want to teach your dog to stay off the couch, press the button as soon as he puts one paw on the seat. Do not wait until he is completely on the couch.

1. Hold the manual button for up to 2 seconds, releasing the button as soon as your pet stops the misbehavior.
2. If your pet has not stopped the misbehavior after 2 seconds of correction, release the manual button; then press it again for up to 2 seconds.
3. Continue this sequence until the misbehavior has stopped.
4. Once the misbehavior has stopped, reward your pet with praise.

Regular Maintenance

- Remove the battery before cleaning.
- Clean the PetSafe Indoor Bark Control with a damp cloth.
- Do not use any kind of spray chemicals or solvent to clean.
- Do not immerse in water or any other liquid.

Note: The Indoor Bark Control is weather-resistant, not waterproof. However, if water enters into the microphone it may disrupt the unit's operation. After the microphone dries, it will resume working properly.

Frequently Asked Questions

| | |
|--|--|
| What is the range for the PetSafe® Indoor Bark Control? | The PetSafe Indoor Bark Control detects barking and sends the ultrasonic tone up to 25 feet. |
| Is the Indoor Bark Control effective on all dogs? | The product may not work on deaf or hearing impaired dogs. |
| Will the Indoor Bark Control work for multiple dogs? | Yes, it is effective on all dogs within the 25 foot range. |

| | |
|---|--|
| Can I mount the Indoor Bark Control outdoors? | No, we do not recommend keeping the product outdoors. PetSafe's Outdoor Bark Control unit is waterproof and can work up to 50 feet from a barking dog. Please visit our website at www.petsafe.net for more information or call our customer care center at 1-800-732-2677. |
| Can a dog become desensitized to the ultrasonic sound? | There are some situations where dogs become desensitized. To avoid this, only use the Indoor Bark Control during periods of unwanted barking (i.e., remove the battery when you are away). |

Terms of Use and Limitation of Liability

1. Terms of Use

This Product is offered to you conditioned upon your acceptance without modification of the terms, conditions and notices contained herein. Usage of this Product implies acceptance of all such terms, conditions, and notices.

2. Proper Use

This Product is designed for use with pets where training is desired. The specific temperament of your pet may not work with this Product. If you are unsure whether this is appropriate for your pet please consult your veterinarian or certified trainer.

Proper use includes reviewing the entire Guide provided with your Product and any specific Caution statements.

3. No Unlawful or Prohibited Use

This Product is designed for use with pets only. This pet training device is not intended to harm, injure or provoke. Using this Product in a way that is not intended could result in violation of Federal, State or local laws.

4. Limitation of Liability

In no event shall Radio Systems® Corporation be liable for any direct, indirect, punitive, incidental, special or consequential damages, or any damages whatsoever arising out of or connected with the use or misuse of this Product. Buyer assumes all risks and liability from the use of this Product.

5. Modification of Terms and Conditions

Radio Systems Corporation reserves the right to change the terms, conditions and notices under which this Product is offered.

FCC

This device complies with IC ES-003; this device complies with Part 15 of the FCC Rules.

Operation is subject to the following 2 conditions:

1. This device may not cause harmful interference.
 2. This device must accept any interference received including interference that may cause undesirable operation.
-

Product Warranty

Please register your product online at www.petsafe.net. All parts are covered under warranty for the life of this product. Labor is covered for the first year of ownership. Thereafter, there is a minimum service charge for the repair or replacement of the product. Misuse, loss, damage by pet or improper use or handling is not covered. PetSafe® will not pay for loss of time, inconvenience, loss of use of your product or any incidental or consequential damage. Warranty void if product resold.

Please contact the Customer Care Center at 1-800-732-2677 if you need service or for help in troubleshooting and, if needed, to arrange a repair for your product (a service charge may apply).

Radio Systems Corporation
10427 Electric Avenue
Knoxville, TN 37932
1-800-732-2677
www.petsafe.net
400-1033