

Serie Rough-in Valve

VALVE207

8" Wall Mounted Lavatory Rough-in Valve

STANDARDS

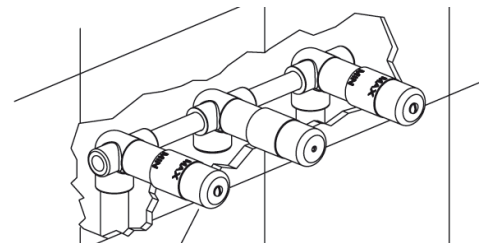
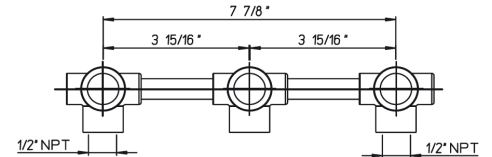
- Certified by CSA International
- Compliant with ANSI NSF61 – Annex G
- Compliant with ASME A112.18.1-B125.1
- Compliant with ANSI A117.1
- Compliant with EPA Water Sense

Finishes

	VALVE207
None	X

Features

	VALVE207
Solid Brass Construction	X
1/2" NPT Inlets	X
Meets NSF 61/9 Annex G Lead Requirements	X
Rough-In Valve Only, Trim Sold Separately	X
3-Hole Valve Compatible with 2 Handle Wallmount Lav Trims	X
Step-By-Step Installation Instructions	X
Limited Lifetime Warranty	X



Project: _____
 Contractor: _____