

PRODUCT BROCHURE



IT'S THE *Little Things*TM

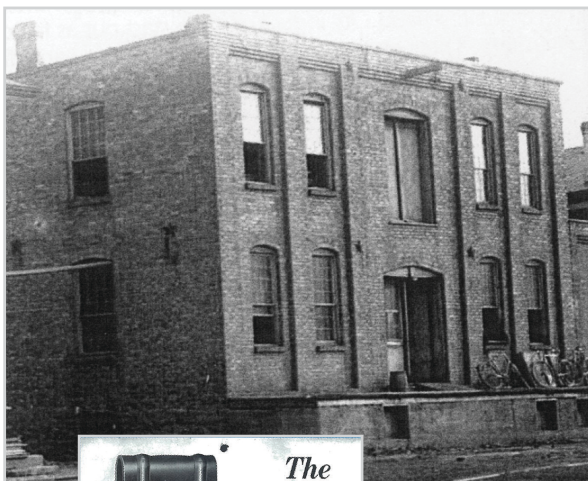
A decorative underline consisting of two horizontal brushstrokes. The top stroke is blue and the bottom stroke is red, both with a slightly wavy, hand-painted appearance.

National Hardware History	p. 4-5
Interior Sliding Door Hardware	p. 6-9
Gate Hardware	p. 10-13
Organization Hardware	p. 14-17
Reinforcement Hardware	p. 18-21
Plant Hardware	p. 22-25
Hobby & Craft Hardware	p. 26-29
Screen & Storm Hardware	p. 30-33
Rope & Chain Hardware	p. 34-37
Metal Shapes	p. 38-43
Track & Hanger Hardware	p. 44-47
Home Hardware	p. 48-51
Hinges	p. 52-55
Security Hardware	p. 56-59
Wire Goods Hardware	p. 60-63
Garage Hardware	p. 64-65

NATIONAL HARDWARE HISTORY

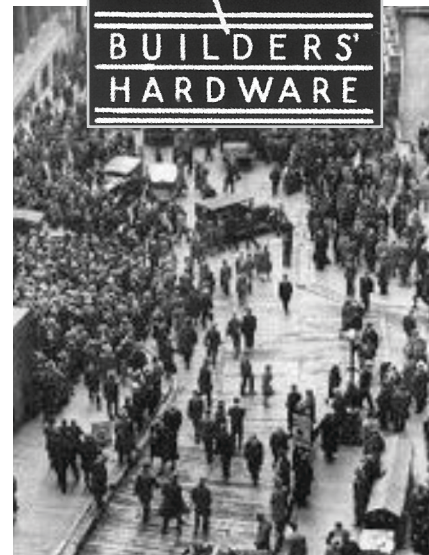


1904: L to R: Louis A. Bittorf (1876-1956), William P. Benson (1869-1948), Herman V. Bittorf (1874-1931)



1902: The first flexible flat-track-trolley hanger that hung without vibration

1911: The Storm Proof Track & Hanger System Invented by Louis Bittorf



1955: National's new letterhead, new energy

1901

National Hardware begins on October 12, 1901 when three young men (Benjamin F. Washburne, William P. Benson and Louis A. Bittorf) buy a small two story wagon factory in Sterling, Illinois and call it National Wagon Company.

When wagon sales begin to decline, the founders switch to selling hardware and rename the company National Manufacturing Co., adding Herman Bittorf as the fourth partner.

1907

National Manufacturing expands several times, building factories in 1907 and 1910 and an office building in 1914.

At the same time, National continues to expand its product offering, adding new products each year. While barn door hardware remains the big seller, National develops products that appeal to city dwellers and farmers, remodelers and professional builders.

1944

During World War II, National again converts its business to war production - its first government order is seven carloads of Strap and T-hinges for the Air Force. Later, National supplies hinges for the Army tables and airplane hangers.

As in the First World War, National's chief product is ammunition box hardware. By retooling and improving the design, National reduces costs and makes the hardware sturdier and easier to use.

1955

The 1950s are a time of rapid change in the hardware industry. As discount chain stores spread across the nation offering low-priced imports, many hardware dealers join buying co-ops that purchase in volume to reduce unit costs. There is also new growth in the farm hardware market and a new force, the pole barn builders.

The sales team is instructed that National can succeed in the post-war marketplace, but only if they convince their customers of the value of new merchandising techniques.



1962: View Pac panel assortments



2015: Decorative Interior Sliding Door Launch



1962

View-pac panel board assortments are introduced in July of 1962. Expanded and refined over the years, this innovative, self-merchandising system remains the foundation of National's sales program.

National also continues to invest in computer technology, machinery and product development. National expands and reorganizes its sales force and increases its business with dealer-owned co-ops and pole barn builders.

1977

In 1977 National Manufacturing has 15,000 customers, 3,000 SKUs and 700 employees. Its work force has doubled in ten years and there is more growth ahead.

In January, National introduces its TAB-LOC steel door frames and in September, opens a new distribution center outside of Rock Falls, IL.

2005

In 2005 National Manufacturing Co. is acquired by The Stanley Works.

Founded in 1843 by Frederick T. Stanley in New Britain, Connecticut, the Stanley Works began as a small manufacturer of hinges, bolts and other door hardware.

The earliest credits include the first hinge hasp, the first crate hinge, the first hinge with reinforced joint, the first "blind" hinge and in 1899, the first patent for a ball bearing hinge.

2017

With several major product launches, a renewed focus on innovation and new websites, National Hardware re-establishes themselves as the leaders in builder's hardware. We provide quality products, outstanding service and best-in-class plan-o-grams and merchandising solutions to leading hardware and home improvement dealers. As a global brand, National Hardware offers more than 15 product categories and over 6,000 SKUs.

INTERIOR SLIDING DOOR HARDWARE

A stylish way to save space and create a custom look, our new decorative interior sliding door hardware is perfect for bedrooms, bathrooms and other living spaces.

Sliding Door Hardware Kits

- Decorative Interior Sliding Door Strap Style
- Decorative Interior Sliding Door Horseshoe Style
- Decorative Interior Sliding Door Top Mount
- Decorative Interior Sliding Door Spokewheel Style
- Decorative Interior Sliding Door Mini Kit

Accessories

- Connecting Adaptor
- Bar Pull
- Cup Pull
- Flush Pull
- Round Pull
- Privacy Hook
- Extension Kit
- Soft Close
- Strap Hanger
- Top Mount Hanger
- Floor Guides
- Bypass Bracket





INTERIOR SLIDING DOOR HARDWARE



N186-960



N186-966



N186-968



N187-010



N187-012



N187-022



N187-030



N187-018



N187-046



N187-054



N186-900

SKU	Product Description	Size	Material	Finish
N186-960	Decorative Interior Sliding Door Hardware ORB	72"	Steel	Oil Rubbed Bronze finish
N187-001	Sliding Door Hardware Connecting Adaptor ORB		Steel	Oil Rubbed Bronze finish
N186-962	Decorative Interior Sliding Door Hardware SS	72"	Stainless Steel	Stainless Steel
N187-002	Sliding Door Hardware Connecting Adaptor SS		Stainless Steel	Stainless Steel
N187-010	Bar Pull ORB	10"	Steel	Oil Rubbed Bronze finish
N187-018	Round Pull SS	10"	Stainless Steel	Stainless Steel
N187-022	Flush Pull ORB	8"	Steel	Oil Rubbed Bronze finish
N187-030	Flush Pull SS	8"	Stainless Steel	Stainless Steel
N187-034	Privacy Hook ORB	4"	Steel	Oil Rubbed Bronze finish
N187-042	Privacy Hook SS	4"	Stainless Steel	Stainless Steel
N187-046	Cup Pull ORB	2-1/8"	Steel	Oil Rubbed Bronze finish
N187-054	Cup Pull SS	2-1/8"	Stainless Steel	Stainless Steel
N186-964	Decorative Interior Sliding Door Hardware Horseshoe ORB	72"	Steel	Oil Rubbed Bronze finish
N187-012	Bar Pull SN	10"	Steel	Satin Nickel
N187-024	Flush Pull SN	8"	Steel	Satin Nickel
N187-036	Privacy Hook SN	4"	Steel	Satin Nickel
N187-048	Cup Pull SN	2-1/8"	Steel	Satin Nickel
N187-003	Decorative Interior Sliding Door Hardware Connecting Adaptor SN		Steel	Satin Nickel
N186-966	Decorative Interior Sliding Door Hardware SN	72"	Steel	Satin Nickel
N186-968	Decorative Interior Sliding Door Hardware Spokewheel ORB	72"	Steel	Oil Rubbed Bronze
N187-060	Sliding Door Track Extension Kit ORB	24"	Steel	Oil Rubbed Bronze
N187-062	Sliding Door Track Extension Kit SN	24"	Steel	Satin Nickel
N187-064	Sliding Door Track Extension Kit SS	24"	Steel	Stainless Steel
N187-080	Sliding Door Soft Close ORB		Plastic	Oil Rubbed Bronze
N187-082	Sliding Door Soft Close SN		Plastic	Satin Nickel
N187-070	Sliding Door Strap Hanger ORB		Steel	Oil Rubbed Bronze
N187-072	Sliding Door Strap Hanger SN		Steel	Satin Nickel
N187-074	Sliding Door Top Mount Hanger SS		Steel	Stainless Steel
N187-090	Single Floor Guide GRY		Aluminum	Gray
N187-092	Double Floor Guide ORB		Aluminum	Oil Rubbed Bronze
N187-094	Double Floor Guide GRY		Aluminum	Gray
N187-100	Bypass Bracket ORB		Steel	Oil Rubbed Bronze
N187-102	Bypass Bracket SN		Steel	Satin Nickel
N186-900	Sliding Door Hardware Top Mount Mini Kit ORB	48"	Steel	Oil Rubbed Bronze
N186-902	Sliding Door Hardware Strap Mini Kit ORB	48"	Steel	Oil Rubbed Bronze

GATE HARDWARE

Repair, replace and update your gate system with functional and decorative hardware available in a variety of finishes.

Gate Hinges

- Gate Kits
- Gate Accessories
- Hooks & Eyes
- Latches & Pulls
- Polymer

Swinging Door Latch



Post Mount Gate Latch Kit



18-in Lockable Cane Bolt

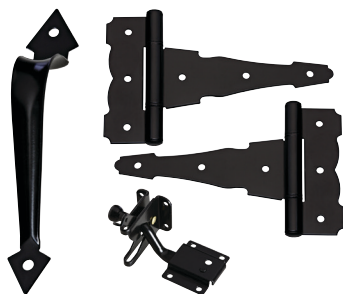




GATE HARDWARE



N109-015



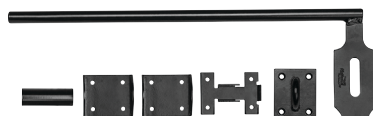
N343-467



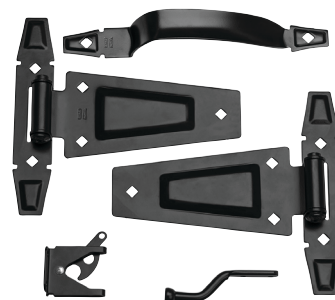
N346-204



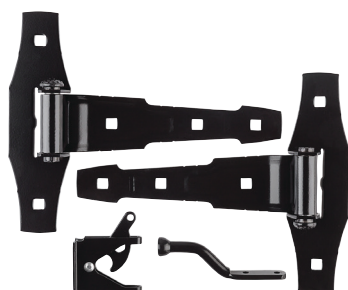
N109-045



N109-002



N214-092



N109-025



N342-626



N109-017



N109-001

SKU	Product Description	Size	Material	Finish
N109-041	Ornamental T-Hinge	4"	Steel	Black
N109-042	Ornamental T-Hinge	6"	Steel	Black
N220-129	Gate Hinges	3-1/2"	Steel	Black
N109-032	Decorative T-Hinge	8"	Steel	Black
N109-034	Decorative T-Hinge	10"	Steel	Black
N109-031	Auto-Close T-Hinge	7"	Steel	Black
N109-007	Heavy Duty Spear Hinge	12"	Steel	Black
N109-011	Spear T-Hinge	6"	Steel	Black
N109-036	Ornamental Strap Hinge	4"	Steel	Black
N109-035	Ornamental Strap Hinge	6"	Steel	Black
N109-033	Decorative Strap Hinge	8"	Steel	Black
N346-201	Lokklatch	4-9/16"	Glass Fiber Polymer	Black
N346-204	Magnalatch Pool Latch	For gates 48" & higher	Glass Fiber Polymer	Black
N346-206	Tru-Close Spring Hinge	3-9/16" x 2-1/2"	Glass Fiber Polymer	Black
N342-774	Auto-Close Gate Hinge	3-1/2"	Steel	Black
N165-498	Gate Spring	11"	Steel	Black
N109-015	Pro Installer Gate Kit	8"	Steel	Black
N214-092	Rustic Gate Kit	.	Steel	Black
N343-467	Decorative Gate Kit	.	Steel	Black
N109-017	Decorative Spear Kit	.	Steel	Black
N109-025	Decorative Gate Kit	.	Steel	Black
N109-002	Lockable Cane Bolt	5/8" x 18"	Steel	Black
N165-902	Cane Bolt	1/2" X 12"	Steel	Black
N109-045	Yardlock Keyless Gate Lock	.	Steel/Plastic	Black
N165-506	Slide Bolt Latch	.	Steel	Black
N342-626	Maxlatch	.	Steel	Black
N109-008	Spear Ring Latch	6"	Steel	Black
N109-001	Heavy Duty Flip Latch	.	Steel	Black
N109-024	Spear Ring Pull	.	Steel	Black
N109-022	Decorative Gate Pull	11"	Stainless Steel	Matte Black

ORGANIZATION HARDWARE

The essentials for any garage or closet organization project, including decorative finishes to match your home's unique style.

Peg & Storage

- Peg Hooks
- Specialty Storage Products
- Storage Hooks
- Storage Systems
- Tubular Hook & Hanger

Shelf & Closet Hardware

- Closet Rod Supports
- Closet Rods
- Folding Shelf Brackets
- Pole Sockets
- Shelf/Rod Brackets
- Shelf Standards
- Supports





ORGANIZATION HARDWARE



N112-002



N112-012



N112-028



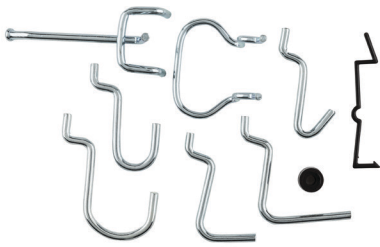
N271-010



N112-088



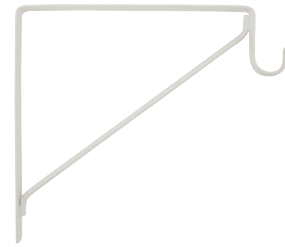
N112-100



N112-060



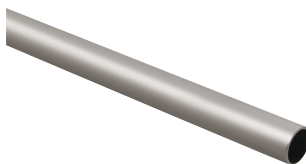
N180-011



N224-428



N171-082



N820-100



N822-093

SKU	Product Description	Size	Material	Finish
N112-060	Peg Hook Assortment		Steel	Zinc plated
N180-011	Single Hook - 1/8", 1/4" Pegboard	4"	Steel	Zinc plated
N180-014	Single Hook - 1/4" Pegboard	8"	Steel	Zinc plated
N180-004	Locking Straight Hook	1"	Steel	Zinc plated
N180-019	Locking Peg Hook	1-1/2"	Steel	Zinc plated
N180-029	Tool Holder		Steel	Zinc plated
N180-037	Double Hook	4"	Steel	Zinc plated
N180-040	Multiple Tool Holder		Steel	Zinc plated
N112-064	Organizer Jar		Plastic	Clear
N112-100	Bike Hanger		Steel	Gray finish
N112-028	Large Bicycle Hook		Steel w/ Vinyl Coating	Vinyl coated
N271-010	Ladder Hook	4"	Steel w/ Vinyl Coating	Vinyl coated
N112-036	Home Hook Assortment		Steel w/ Vinyl Coating	Vinyl coated
N112-022	Large Screw Hook		Steel w/ Vinyl Coating	Vinyl coated
N112-024	Large Ladder Hook		Steel w/ Vinyl Coating	Vinyl coated
N112-026	Large Double Screw Hook		Steel w/ Vinyl Coating	Vinyl coated
N188-004	Double Screw Hook		Steel w/ Vinyl Coating	Vinyl coated
N188-005	Storage Screw Hook		Steel w/ Vinyl Coating	Vinyl coated
N188-009	Double Hook	2-3/4"	Steel w/ Vinyl Coating	Vinyl coated
N112-052	Flip-Up Tool Hanger		Steel	Gray finish
N112-088	Adjustable Storage Organizer	16"	Plastic	White finish
N112-074	Tool Storage Clip	11"	Steel	Zinc plated
N112-082	Sliding Grip Clamp Organizer	18"	Steel	Gray finish
N112-002	Jumbo Storage Hook		Steel	Gray finish
N112-012	Storage Hook		Steel	Zinc plated
N112-004	Overhead Storage Hanger		Steel	Gray finish
N112-008	Double Arm Ladder Hanger		Steel	Gray finish
N112-014	All-Purpose Storage Bracket		Steel	Gray finish
N171-082	Utility Shelf Bracket	10"x12"	Steel	Gray finish
N224-428	Shelf/Rod Bracket		Steel	White finish
S820-100	Closet Rod - 2.0mm Thickness	1-5/16" Diameter	Steel	Satin Nickel
S822-093	Shelf/Rod Bracket		Steel	Satin Nickel

REINFORCEMENT HARDWARE

Used to strengthen and reinforce angles, heavy duty reinforcement provides greater stability and strength to building structures.

Bolts & Screws

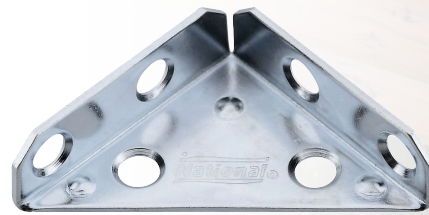
- Lag Screws
- Wood Screws

Braces

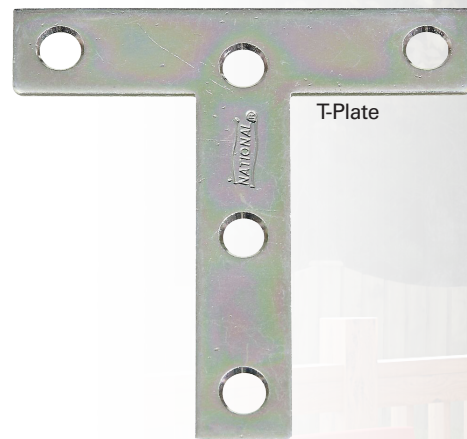
- Chair Braces
- Corner Braces
- Mending Braces
- Strap Braces

Plates

- Corner Plates
- Mending Plates
- T-Plates



Corner Brace



T-Plate





REINFORCEMENT HARDWARE



N266-270



N272-716



N190-892



N351-478



N351-484



N348-300



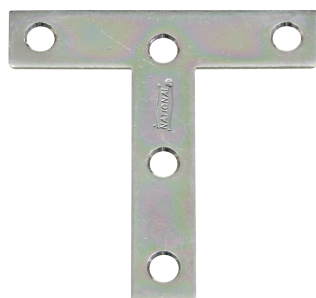
N176-347



N266-480



N190-819



N113-704

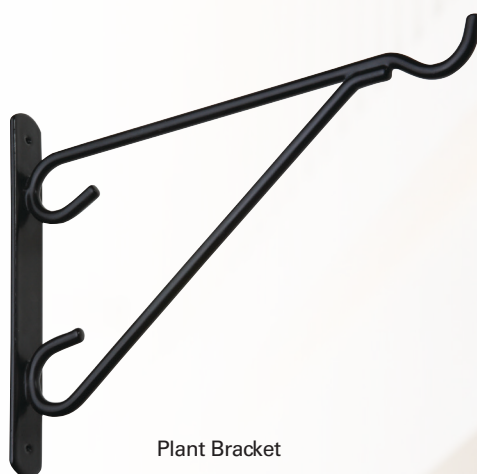
SKU	Product Description	Size	Material	Finish
N266-270	Corner Braces in Zinc plated	1" x 1/2"	Steel	Zinc Plated
N266-304	Corner Braces in Zinc plated	1-1/2" x 5/8"	Steel	Zinc Plated
N266-361	Corner Braces in Zinc plated	2" x 5/8"	Steel	Zinc Plated
N220-251	Corner Braces in Zinc plated	4" x 7/8"	Steel	Zinc Plated
N285-510	Corner Braces in Zinc plated	1-1/2" x 1-1/2"	Steel	Zinc Plated
N220-145	Corner Braces in Zinc plated	4" x 7/8"	Steel	Zinc Plated
N266-395	Corner Braces in Zinc plated	3" x 3/4"	Steel	Zinc Plated
N220-269	Corner Braces in Zinc plated	5" x 1"	Steel	Zinc Plated
N266-338	Corner Braces in Zinc plated	2-1/2" x 5/8"	Steel	Zinc Plated
N285-536	Corner Braces in Zinc plated	2-1/2" x 1-1/2"	Steel	Zinc Plated
N272-716	Mending Braces in Zinc plated	2" x 1/2"	Steel	Zinc Plated
N275-669	Corner Braces in Zinc plated	3/4" x 1/2"	Steel	Zinc Plated
N204-990	Corner Braces in Zinc plated	6" x 1"	Steel	Zinc Plated
N220-152	Corner Braces in Zinc plated	5" x 1"	Steel	Zinc Plated
N220-277	Corner Braces in Zinc plated	6" x 1-1/8"	Steel	Zinc Plated
N272-724	Mending Braces in Zinc plated	3" x 5/8"	Steel	Zinc Plated
N220-384	Mending Braces in Zinc plated	6" x 3/4"	Steel	Zinc Plated
N220-160	Corner Braces in Zinc plated	6" x 1-1/8"	Steel	Zinc Plated
N272-732	Mending Braces in Zinc plated	4" x 5/8"	Steel	Zinc Plated
N190-892	Mending Braces in Brass	2" x 1/2"	Steel	Brass
N264-200	Corner Braces in Zinc plated	3-1/2" x 3/4"	Steel	Zinc Plated
N113-134	Corner Braces in Zinc plated	1-1/2" x 5/8"	Steel	Zinc Plated
N351-478	Offset Leg Corner Braces in Black finish	7.5, 1.6 x 1.5 x 1/8	Steel	Black
N351-484	Wide Corner Braces in Black finish	1.6 x 5 x 1/8	Steel	Black
N351-483	Wide Corner Braces in Black finish	1.6 X 3 X 1/8	Steel	Black
N348-300	Corner Braces in Stainless Steel	1-1/2" X 5/8"	Steel	Stainless Steel
N176-347	Chair Braces in Antique Bronze	1" x 3/4"	Steel	Antique Bronze
N266-480	Corner Braces in Black finish	1-1/2" x 5/8"	Steel	Black
N190-819	Corner Braces in Brass	1" x 1/2"	Steel	Brass
N113-704	T Plates in Zinc plated	3" x3"	Steel	Zinc plated

PLANT HARDWARE

Add instant charm to your home with a variety of essential products to display your plants inside and outdoors.

Plant Brackets

- Hanging Plant Brackets
- Outdoor Plant Brackets
- Swivel Brackets



Plant Bracket

Accessories

- Hooks
- Chains
- Floral wire



Plant Hook



Decorative Plant Hook



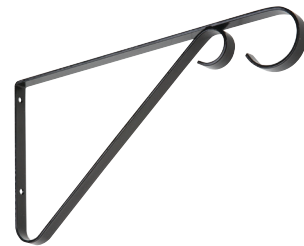
PLANT HARDWARE



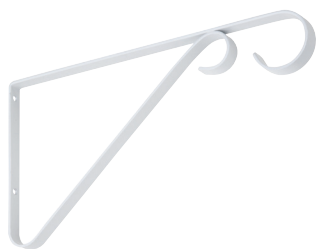
N274-480



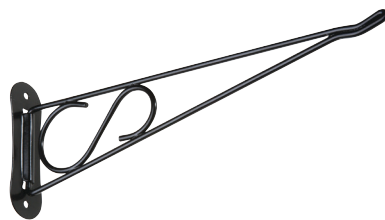
N274-472



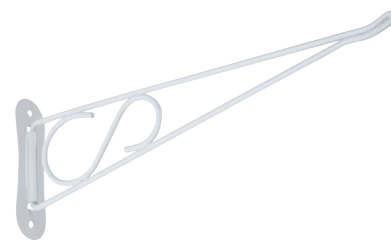
N274-563



N274-571



N274-795



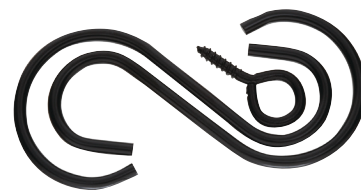
N274-803



N274-894



N274-910



N275-149



N274-969

SKU	Product Description	Size	Material	Finish
N274-480	Ornamental Plant Brackets	5" x 3-1/2"	Steel	Antique Black
N274-472	Ornamental Plant Brackets	5" x 3-1/2"	Steel	Antique Bronze
N274-514	Hanging Plant Brackets	6"	Steel	Black
N274-563	Hanging Plant Brackets	9"	Steel	Black
N274-522	Hanging Plant Brackets	6"	Steel	White
N274-571	Hanging Plant Brackets	9"	Steel	White
N274-530	Outdoor Plant Brackets	8"	Steel	Black vinyl coated
N274-647	Outdoor Plant Brackets	12"	Steel	Black vinyl coated
N274-548	Outdoor Plant Brackets	8"	Steel	White vinyl coated
N274-654	Outdoor Plant Brackets	12"	Steel	White vinyl coated
N283-143	Outdoor Plant Brackets	15" x 11"	Steel	Black vinyl coated
N283-150	Outdoor Plant Brackets	15" x 11"	Steel	White vinyl coated
N274-761	Swivel Brackets	9"	Steel	Black
N274-779	Swivel Brackets	9"	Steel	White
N274-795	Swivel Brackets	10"	Steel	Black
N274-803	Swivel Brackets	10"	Steel	White
N275-149	Extension Hook Kits	3-1/2"	Steel	Black
N275-131	Extension Hook Kits	3-1/2"	Steel	White
N274-944	Ceiling Hooks	2-1/2"	Steel	Black
N274-928	Ceiling Hooks	2-1/2"	Steel	White
N275-198	Ceiling Hooks, Large	6"	Steel	Black
N275-206	Ceiling Hooks, Large	6"	Steel	White
N274-969	Suspended Ceiling Hooks	2"	Steel	White
N274-829	Swag Hooks	1-1/2"	Die Cast	Black
N274-845	Swag Hooks	1-1/2"	Die Cast	White
N274-860	Swag Hooks	2-1/4"	Die Cast	Black
N274-878	Swag Hooks	2-1/4"	Die Cast	White
N274-894	Swivel Swag Hooks	2"	Die Cast	Antique Brass
N274-910	Swivel Swag Hooks	2"	Die Cast	White
N274-985	Floral Wire	24 Ga. x 100'	Steel	Green

HOBBY & CRAFT HARDWARE

Enhance your creations with the right hardware for your specialty hobby projects.

Accessories

- Bolts & Catches
- Corner Braces
- Hasps & Hinges
- Padlocks
- Pulls & Knobs



Decorative Hasp



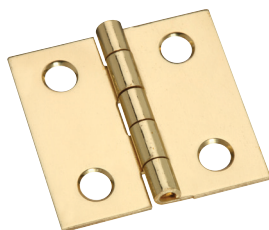
Broad Hinge



HOBBY & CRAFT HARDWARE



N211-021



N211-334



N211-016



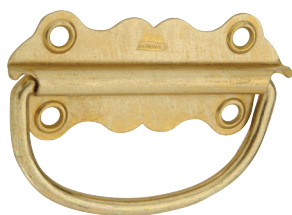
N211-012



N211-023



N213-454



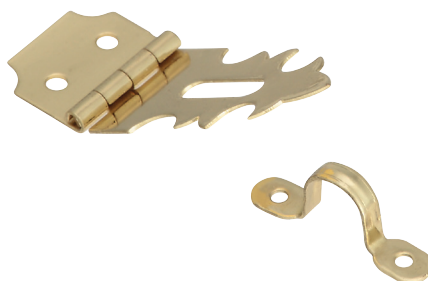
N213-421



N240-796



N213-512



N211-912

SKU	Product Description	Size	Material	Finish
N211-391	Decorative Broad Hinge	2-1/2" x 1-3/4"	Solid Brass	Solid Brass
N211-383	Decorative Broad Hinge	2" x 1-3/8"	Solid Brass	Antique Brass
N211-375	Decorative Broad Hinge	2" x 1-3/8"	Solid Brass	Solid Brass
N211-359	Decorative Broad Hinge	1-1/2" x 1-1/4"	Solid Brass	Solid Brass
N211-334	Decorative Broad Hinge	1" x 1"	Solid Brass	Solid Brass
N211-021	Decorative Broad Hinge	2" x 1-3/8"	Steel	Oil Rubbed Bronze
N213-421	Decorative Chest Handle	3-1/2"	Steel	Solid Brass
N213-454	Decorative Corner	9/16" x 1-1/4"	Solid Brass	Solid Brass
N213-447	Decorative Corner	5/8" x 1-3/4"	Solid Brass	Solid Brass
N213-397	Decorative Corner Brace	1-1/2" x 5/8"	Solid Brass	Solid Brass
N213-389	Decorative Corner Brace	1" x 1/2"	Solid Brass	Solid Brass
N219-063	Decorative Flush Ring Pull	1-1/2"	Solid Brass	Solid Brass
N211-016	Decorative Hasp	5/8" x 1-7/8"	Steel	Satin Nickel
N211-912	Decorative Hasp/Hook	3/4" x 2-3/4"	Solid Brass	Solid Brass
N211-847	Decorative Hinge	1-11/16"x3-1/16"	Solid Brass	Solid Brass
N211-821	Decorative Hinge	1-5/16" x 2-1/4"	Solid Brass	Solid Brass
N211-938	Decorative Hook/Staple		Solid Brass	Solid Brass
N211-023	Decorative Hook/Staple		Steel	Oil Rubbed Bronze
N240-796	Decorative Knob	3/4"	Zinc Die Cast	Brass
N213-512	Decorative Luggage Handle	6"	Plastic w/ Steel Plates	Brown
N211-300	Decorative Medium Hinge	2" x 1-3/16"	Solid Brass	Solid Brass
N211-012	Decorative Narrow Hinge	3/4" x 5/8"	Steel	Satin Nickel
N211-243	Decorative Narrow Hinge	2" x 1"	Solid Brass	Antique Brass
N211-235	Decorative Narrow Hinge	2" x 1"	Solid Brass	Solid Brass
N211-193	Decorative Narrow Hinge	3/4" x 5/8"	Solid Brass	Solid Brass
N211-177	Decorative Narrow Hinge	1" x 3/4"	Solid Brass	Solid Brass

SCREEN & STORM HARDWARE

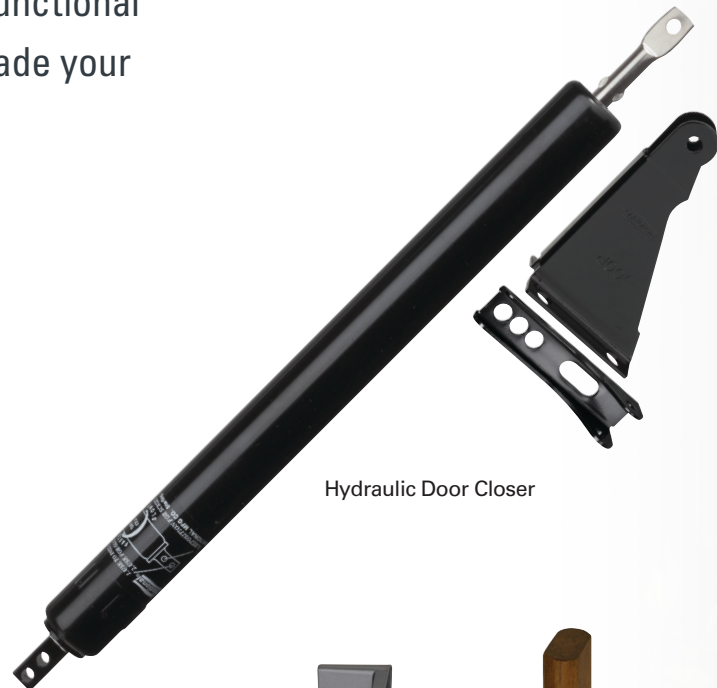
A complete line of decorative and functional hardware to repair, replace or upgrade your screen and storm doors.

Patio Door Hardware

- Mortise Latches
- Surface Mount Handlesets

Accessories

- Screen/Storm Door Kits
- Chain Door Stops
- Door Closer Part Kits
- Door Closers
- Door Hinges
- Key Blanks
- Knob Latches
- Mortise Locksets
- Pushbutton Latches
- Spring Hinges
- Storm Door Latches
- And more...



Hydraulic Door Closer



Patio Door
Handle/Latch Set



Universal
Knob Latch



SCREEN & STORM HARDWARE



N279-002



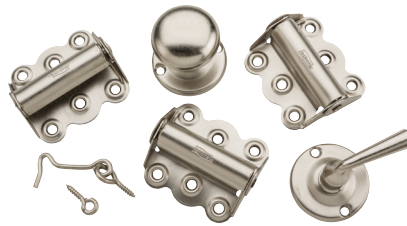
N178-798



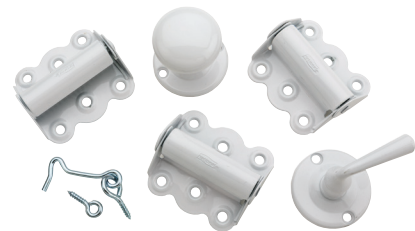
N178-822



N107-409



N100-013



N100-019



N262-196



N100-023

SKU	Product Description	Size	Material	Finish
N107-409	Screen/Storm Door Set		Steel	Black
N107-425	Screen/Storm Door Set		Steel	Zinc Plated
N190-751	Screen/Storm Door Set		Steel	Zinc Plated
N100-014	Screen Door Kit		Steel	Black
N100-018	Screen Door Kit		Steel	Brass
N109-044	Screen Door Kit		Steel	Oil Rubbed Bronze
N100-013	Screen Door Kit		Steel	Satin Nickel
N100-019	Screen Door Kit		Steel	White
N178-798	Universal Knob Latch	1-1/2, 1-3/4, 3"	Die Cast	Black
N178-814	Universal Knob Latch	1-1/2, 1-3/4, 3"	Die Cast	Silver
N178-806	Universal Keyed Knob Latch	1-1/2, 1-3/4, 3"	Die Cast	Black
N178-822	Universal Keyed Knob Latch	1-1/2, 1-3/4, 3"	Die Cast	Silver
N262-204	Lever Latch	1-3/4"	Die Cast	Black
N262-196	Lever Latch	1-3/4"	Die Cast	White
N178-350	Pushbutton Latch	1-3/4"	Die Cast	Black
N178-368	Pushbutton Latch	1-3/4"	Die Cast	Silver
N213-074	Pushbutton Latch	1-3/4"	Die Cast	White
N178-392	Pushbutton Latch	1-3/4"	Die Cast	Black
N213-165	Pushbutton Latch	1-3/4"	Die Cast	White
N100-023	Colonial Pushbutton Latch	1-3/4"	Zinc/Die Cast	Black
N100-031	Colonial Keyed Pushbutton Latch	1-3/4"	Zinc/Die Cast	Black
N279-778	Touch'n Hold Door Closer		Steel	Aluminum
N279-786	Touch'n Hold Door Closer		Steel	Black
N279-794	Touch'n Hold Door Closer		Steel	White
N279-001	Touch'n Hold Smooth Door Closer		Plastic/Metal	Black
N279-002	Touch'n Hold Smooth Door Closer		Plastic/Metal	White
N181-610	Screen/Storm Door Closer		Steel	Black
N213-207	Screen/Storm Door Closer		Steel	White

ROPE & CHAIN HARDWARE

A variety of rope and chain products for your outdoor connection needs.

Accessories

- Cable & Wire Accessories
- Chain Accessories
- Rope Accessories
- Snaps & Hooks
- Tie-Down Accessories



Interlocking
Spring Snap



Clevis Grab Hook



Clevis Slip
Chain Hook



NOTE: THIS PRODUCT HAS BEEN ALTERED FROM IT'S ORIGINAL FINISH

ROPE & CHAIN HARDWARE



N222-885



N195-784



N223-032



N220-616



N282-079



N222-695



N830-310



N177-238



N248-286



N222-679

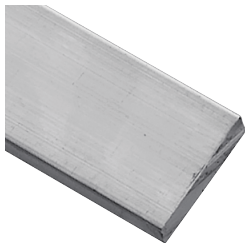
SKU	Product Description	Size	Material	Finish
N222-885	3112Bc Lk Spr Snp 3/8 Zn 3/8In X 3-1/8In	3/8" X 3-1/8"	Steel	Zinc
N195-784	3211Bc 1-1/2 Sgl Pulley Swiv	1-1/2"	Steel	Zinc
N262-402	3166Bc Lck Spg Snp Ss 7/16Inx3-1/4In	7/16" X 3-1/4"	Stainless Steel	Stainless Steel
N223-032	3150Bc 5/16 Quick Link Zn	5/16"	Steel	Zinc
N222-893	3112Bc Lk Spr Snp 9/16 Zn 1/2X3-15/16	1/2" x 3-15/16"	Steel	Zinc
N223-024	3150Bc 1/4 Quick Link Zn	1/4"	Steel	Zinc
N262-501	3167Bc 5/16 Quick Link Ss	5/16"	Stainless Steel	Stainless Steel
N262-410	3166Bc Lck Spg Snp 5/8 Ss 5/8In X 4In	5/8" x 4" - 11/16"	Stainless Steel	Stainless Steel
N262-428	3166Bc Lck Spg Snp 3/4 Ss 3/4Inx4-3/4In	3/4" x 4-3/4" - 15/16"	Stainless Steel	Stainless Steel
N195-800	3213Bc 1-1/2 Sgl Pulley Fxd	1-1/2"	Steel	Zinc
N222-877	3112Bc Lk Spr Snp 5/16 Zn 5/16Inx2-3/8In	5/16" x 2-3/8"	Steel	Zinc
N223-016	3150Bc 3/16 Quick Link Zn	3/16"	Steel	Zinc
N262-493	3167Bc 1/4 Quick Link Ss	1/4"	Stainless Steel	Stainless Steel
N262-519	3167Bc 3/8 Quick Link Ss	3/8"	Stainless Steel	Stainless Steel
N220-616	2060Bc Hitch Ring W/Plt Zn	N/A	Steel	Zinc
N195-792	3211Bc 2 Sgl Pulley Swiv Zn	2"	Steel	Zinc
N223-040	3150Bc 3/8 Quick Link Zn	3/8"	Steel	Zinc
N262-485	3167Bc 3/16 Quick Link Ss	3/16"	Stainless Steel	Stainless Steel
N195-818	3213Bc 2 Sgl Pulley Fxd Zn	2"	Steel	Zinc
N262-394	3166Bc Lck Spg Snp 5/16 Ss 5/16 X 2-3/8	5/16" x 2-3/8" - 5/16"	Stainless Steel	Stainless Steel
N220-020	3213Bc 3 Sgl Pulley Fxd Weatherproof	3"	Steel	Zinc
N220-004	3211Bc 3 Sgl Pulley Swiv Weatherproof	3"	Steel	Zinc
N282-079	3253Bc 3/8Clv Grb Hkzn G Rade 70/Clevis	3/8"	Forged Steel	Yellow Chromate
N223-057	3150Bc 1/2 Quick Link Zn	1/2"	Steel	Zinc
N222-695	3033Bc Dbl Blt Snp Nic 4-9/16In	4-9/16"	Steel	Nickel
N830-310	3250Bc 5/8 Anchr Shkl Glv	5/8"	Steel	Galvanized
N223-693	3250Bc 1/2 Anchr Shkl Glv	1/2"	Steel	Galvanized
N233-247	3219Bc 1-1/2 WII/Ceil Mnt Sgl Puley Wprf	1-1/2"	Steel	Zinc
N199-810	3214Bc 1-1/2 Dbl Pulley Fe Weatherproof	1-1/2"	Steel	Zinc
N177-238	3240Bc 3/8 Clv Grb Hk Blue	3/8"	Forged Steel	Blue

METAL SHAPES

A complete line of metal products for residential and commercial applications.

- Aluminum
- Galvanized Steel
- Oiled Steel
- Plain Steel
- Solid Brass
- Stainless Steel
- Zinc Plated Steel

ALUMINUM



RECTANGULAR BARS

Reinforcement, base plates, and repair projects.

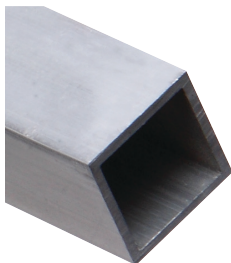
Thickness	Width Range	Length Range
1/16" - 1/4"	1/2" - 2"	36" - 96"



ALUMINUM SHEETS

Duct work, flashing, gutters and repair projects.

Thickness	Width Range	Length Range
.020 - .100	18" - 48"	6" - 36"



ALUMINUM SQUARE TUBES

Fencing, handrails, frame work and gates.

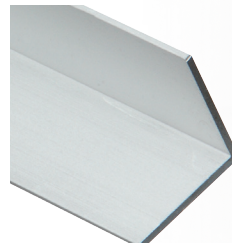
Thickness	Width Range	Length Range
1/16"	3/4" - 1"	36" - 96"



ALUMINUM ROUND TUBES

Fencing, handrails, frame work and gates.

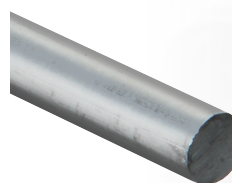
Thickness	Diameter Range	Length Range
1/16"	1/2" - 1 1/4"	36" - 96"



ALUMINUM ANGLES

Trim work, frame work and reinforcement projects.

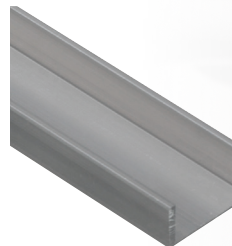
Thickness	Width Range	Length Range
1/16" - 1/6"	3/4" - 2"	36" - 96"



ALUMINUM ROUND RODS

Axles, hanging, and hobby projects.

Thickness	Diameter Range	Length Range
-	1/4" - 1/2"	36" - 96"



ALUMINUM CHANNELS

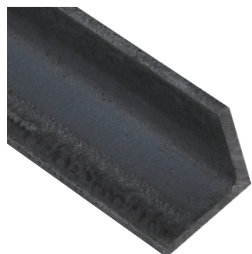
Trim work, frame work and reinforcement projects.

Thickness	Width Range	Length Range
1/16"	1/4" - 3/4"	48" - 96"



METAL SHAPES

PLAIN STEEL



HOT-ROLLED STEEL ANGLES

Building tables, workbenches, support frames, equipment stands, repair work, and construction applications where strong support is needed. Meets ASTM A36.

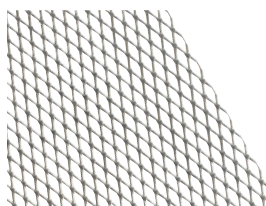
Thickness	Width Range	Length Range
1/8" - 1/4"	1/2" - 2"	36" - 72"



HOT-ROLLED STEEL CHANNELS

Building tables, workbenches, support frames, equipment stands, repair work, and construction applications where strong support is needed.

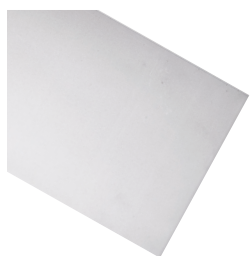
Thickness	Width Range	Length Range
1/8"	1" - 2"	36"



HOT-ROLLED EXPANDED STEEL SHEETS

Used for machinery guards, screen door protectors, as well as ventilated motor housings.

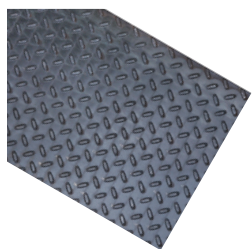
Thickness	Width Range	Length Range
13 - 18 Gauge	12" - 32"	12" - 24"



COLD-ROLLED STEEL SHEETS

General purpose steel sheet for commercial and industrial applications. Easily formed and welded and suitable for painting and plating. Meets ASTM A1008.

Thickness	Width Range	Length Range
16 - 22 Gauge	18" - 24"	6" - 24"

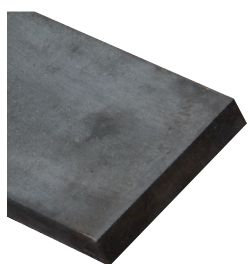


TREAD PLATE SHEET

Steel plate for use in building steps, cargo boxes, running boards, etc.

Thickness	Width Range	Length Range
14 Gauge	12" - 24"	24"

18 Gauge flat plate



HOT-ROLLED RECTANGULAR FLATS

Designed as supports for construction or industrial applications. Product families 4062 and 4063 meet ASTM A1011. Product Family 4064 meets ASTM A36.

Thickness	Width Range	Length Range
1/8" - 1/2"	1/2" - 3"	36" - 72"



REBAR

Used in foundation construction, concrete forms and post reinforcement. Meets ASTM A305.

Size	Diameter Range	Length Range
#4	1/2"	24" - 72"



HOT-ROLLED STEEL ROUND TUBES

General purpose steel tube for commercial and industrial applications. Tubing seam is electric-resistance welded. Meets ASTM A513.

Thickness	Diameter Range	Length Range
16 Gauge	1/2" - 1"	36" - 48"



HOT-ROLLED STEEL SQUARE TUBES

General purpose steel tube for commercial and industrial applications. Frames, railings, truck racks and gates. Meets ASTM A513.

Thickness	Width Range	Length Range
16 Gauge	1/2" - 1-1/4"	36" - 72"



HOT-ROLLED STEEL SMOOTH RODS

Braces, supports, shafts and axles. Meets ASTM A510.

Thickness	Diameter Range	Length Range
-	1/4" - 3/4"	36" - 72"



COLD-ROLLED STEEL SMOOTH RODS

Fencing, supports, railing, sign posts and frame work. Meets ASTM A510.

Thickness	Diameter Range	Length Range
-	1/8" - 1"	12" - 72"

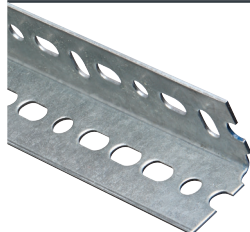


HOT-ROLLED STEEL SQUARE STOCK

General purpose steel product. Not intended for structural applications. Meets ASTM A36.

Thickness	Width Range	Length Range
1/2"	1/2"	48"

GALVANIZED STEEL



SLOTTED STEEL ANGLES

Mounting garage door openers, tables, workbenches, and applications where support is needed.

Thickness	Width Range	Length Range
0.047" - 0.074"	1-1/4" - 2-1/4"	12" - 96"



PERFORATED TUBES

Used for building frames, tables, workbenches and sign posts.

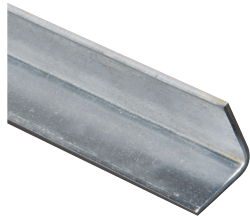
Thickness	Width Range	Length Range
0.074"	1" - 1-3/4"	36" - 72"



SLOTTED STEEL RECTANGULAR FLATS

Designed for hanging or bracing. Holes are punched to match when used with slotted angles.

Thickness	Width Range	Length Range
0.074"	1-3/8" - 2-3/16"	36" - 72"



SOLID STEEL ANGLES

Can be used in construction and other repair applications where a strong support and weather resistance is needed.

Thickness	Width Range	Length Range
12 Gauge	3/4" - 1-1/4"	36" - 72"



SOLID STEEL RECTANGULAR BARS

Reinforcement, base plates and repair projects.

Thickness	Width Range	Length Range
12 Gauge	3/4" - 1-1/4"	36" - 72"



GALVANIZED STEEL SHEETS

Can be formed without flaking or peeling. Meets ASTM A653.

Thickness	Width Range	Length Range
26 - 28 Gauge	18" - 30"	12" - 30"



GALVANIZED THREADED RODS

For hanging, connecting, clamping and supporting in plumbing, heating electrical and marine projects. Meets ASTM A153 and ASTM A307.

Thickness	Diameter Range	Length Range
—	3/8" - 3/4"	12" - 72"

ZINC-PLATED STEEL



THREADED STEEL RODS

For hanging, connecting, clamping and supporting in plumbing, heating, electrical and do-it-yourself projects. Available in course thread, fine thread and metric sizes. Meets ASTM A307.

Thickness	Diameter Range	Length Range
—	#6 - 1"	12" - 120"



SMOOTH STEEL RODS

For use as axles, shafts and supports.

Thickness	Diameter Range	Length Range
—	1/4" - 1"	36" - 72"



SQUARE KEY STOCK

Designed as a wedge or locking device in shaft keyways to transmit the torque in motors or machines.

Thickness	Width Range	Length Range
—	1/8" - 1/2"	12"

OILED STEEL



HEAT TREATED STEEL RODS

For bolting valves, flanges and fittings of high pressure/temperature.

Thickness	Diameter Range	Length Range
—	1/4" - 5/8"	36"

BRASS



BRASS THREADED RODS

For hanging, connecting, clamping and supporting in plumbing, heating, electrical and do-it-yourself projects.

Thickness	Diameter Range	Length Range
—	#6 - 5/16"	12"



SMOOTH BRASS RODS

For hobby, craft and marine projects.

Thickness	Diameter Range	Length Range
—	1/8" - 1/4"	36"

METAL SHAPES

STAINLESS STEEL



STAINLESS STEEL THREADED RODS

For hanging, connecting, clamping and supporting in plumbing, heating, electrical and do-it-yourself projects. Especially suitable for marine and other outdoor applications.
18-8 Alloy stainless steel.

Thickness	Diameter Range	Length Range
–	#10 - 3/4"	36"



STAINLESS STEEL SMOOTH RODS

For braces, supports and axles.

Thickness	Diameter Range	Length Range
–	1/8" - 3/16"	36"

ACCESSORIES



COUPLERS FOR THREADED RODS

For connection two peices of threaded rod. Larger couplers come with "witness holes" to confirm rods are threaded together completely. Available in course thread, fine thread and zinc, galvanized finishes.

Thickness	Diameter Range	Length Range
–	#10 - 1"	–



INSIDE ANGLES FOR PERFORATED TUBES

Connect slotted and solid steel tubes, angles and bars together to create workbenches, stands, tables or other framework.
14 gauge galvanized steel.



CORNER PLATES FOR SLOTTED ANGLES

Join and brace slotted steel angles and bars.



WELDABLE HINGES

Weld directly to surface.
No holes or drilling needed.



GUSSETS FOR PERFORATED TUBES

Connect slotted and solid steel tubes, angles and bars together to create workbenches, stands, tables or other framework.

SKU	Product Description	Size	Material	Finish
N179-515	N179-515- 4000Bc 3/8-16X36 T Rod Zn (Yellow)	3'	Steel	Zinc Plated
N179-531	N179-531- 4000Bc 1/2-13X36 T Rod Zn (Blue)	3'	Steel	Zinc Plated
N316-463	N316-463- 4080Bc .5X1.5x36 Chl1/8 Ps (Yellow) Hot Rolled	3'	Steel	Plain Steel
N180-109	N180-109- 4020Bc 1-1/2X72 Slit Angl Glv (Blue)	6'	Steel	Galvanized
N179-549	N179-549- 4000Bc 5/8-11X36 T Rod Zn (Red)	3'	Steel	Zinc Plated
N180-075	N180-075- 4020Bc 1-1/2X36 Slit Angl Glv (Blue)	3'	Steel	Galvanized
N247-684	N247-684- 4208Bc3/4X1/16X72 Chnl Mil(Ye)57/64X9/16X1/16X6	6'	Aluminum	Mill
N179-606	N179-606- 4000Bc 3/8-16X72 T Rod Zn (Yellow)	6'	Steel	Zinc Plated
N179-754	N179-754- 4005Bc 3/16X36 Smth Rod Zn (Green)	3'	Steel	Zinc Plated
N179-762	N179-762- 4005Bc 1/4X36 Smth Rod Zn (Blue)	3'	Steel	Zinc Plated
N182-683	4003Bc 3/8-16 Coupler Zn		Steel	Zinc Plated
N316-349	N316-349- 4220Bc 24X12 Sht Pol Al (Green) .063Ga-Dimnd Plt		Aluminum	Polished Aluminum
N179-622	N179-622- 4000Bc 1/2-13X72 T Rod Zn (Blue)	6'	Steel	Zinc Plated
N341-354	N341-354- 4040Bc 1-3/4X72 Perf Tub E (Blue)	6'	Steel	Galvanized
N341-347	N341-347- 4040Bc 1-3/4X48 Perf Tub E (Blue)	4'	Steel	Galvanized
N316-489	N316-489- 4085Bc 1/2X36 #4 Rebarps (Blue)	3'	Steel	Plain Steel
N247-189	N247-189- 4201Bc 3/4X1/16X48 Bar Mil(Red)	4'	Aluminum	Mill
N342-170	N342-170- 4205Bc 1/4X36 Rnd Rodmil (Blue)	3'	Aluminum	Mill
N301-127	N301-127- 4068Bc 1/2X36 Rnd Tubeys (Blue) 16 Gauge	3'	Steel	Plain Steel
N180-125	N180-125- 4025Bc 1-3/8X36 Slit Flat Glv (Blue)	3'	Steel	Galvanized
N247-528	N247-528- 4206Bc 3/4X1/16X48 Tube Mil(Yellow)	4'	Aluminum	Mill
N215-764	N215-764- 4071Bc 24X12 Sheet Metal Ps (Green) 22 Gauge		Steel	Plain Steel
N316-307	N316-307- 4215Bc 24X6 Alum Sheet Mil (Yellow) .025 Gauge		Aluminum	Mill
N341-248	N341-248- 4027Bc 2-3/8X48 Slot Str Ap	4'	Steel	Galvanized
N179-770	N179-770- 4005Bc 5/16X36 Smth Rod Zn (Red)	3'	Steel	Zinc Plated
N215-582	N215-582- 4062Bc 1-1/2X48 Flt 1/8 Ps (Yellow) Hot Rolled	4'	Steel	Plain Steel
N180-133	N180-133- 4025Bc 1-3/8X48 Slit Flat Glv (Blue)	4'	Steel	Galvanized
N215-434	N215-434- 4060Bc 1X48 Angl 1/8 Ps (Yellow) Hot Rolled	4'	Steel	Plain Steel
N215-459	N215-459- 4060Bc 1-1/4X48 Angl 1/8 Ps (Yellow) Hot Rolled	4'	Steel	Plain Steel
N215-715	N215-715- 4067Bc 1X48 Sqr Tube Ps (Red) 16 Gauge	4'	Steel	Plain Steel

TRACK & HANGER HARDWARE

A variety of products for your farm and commercial sliding door system.

Sections:

- Box Rail
- Box Rail Hangers
- Sliding Door Accessories
- Sliding Door Parts
- TAB-LOC™ Sliding Doors
- TrackMaster™ Round Rail
- TrackMaster™ Round Rail Hangers

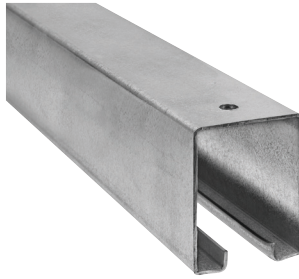




TRACK & HANGER HARDWARE



N112-102



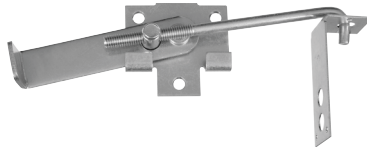
N105-270



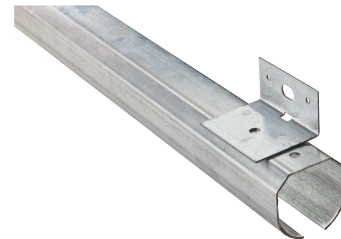
N174-268



N104-331



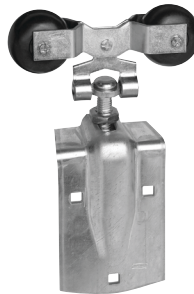
N161-760



N193-946



N193-714



N193-730



N100-006



N100-006

SKU	Product Description	Size	Material	Finish
N105-270	Box Rail	12'	Steel	Galvanized finish
N105-726	Box Rail	8'	Steel	Galvanized finish
N105-213	Box Rail	10'	Steel	Galvanized finish
N104-307	Box Rail End Cap		Steel	Galvanized finish
N174-268	Box Rail Hanger - 9" Flexible Bolt	9"	Steel w/ Delrin Bearings	Zinc plated
N168-815	Box Rail Hanger - Flexible Strap		Steel w/ Delrin Bearings	Zinc plated
N112-102	Box Rail Hanger - Rigid Strap		Steel w/ Delrin Bearings	Zinc plated
N185-447	Center Latch		Steel	Zinc plated
N100-834	Door Bumper		Steel	Zinc plated
N104-786	Double Box Rail Adjustable Bracket		Steel	Galvanized finish
N175-687	Easy Frame Steel Verticals	10'	Steel	White finish
N106-120	Face Mount Box Rail with Galvanized Flashing	12'	Steel	Galvanized finish
N131-565	Floor Mounted Door Guide		Steel	Zinc plated
N131-490	Heavy Stay Roller		Steel & Delrin Wheel	Zinc plated
N161-760	Jamb Latch	7"	Steel	Zinc plated
N193-961	Round Rail	12'	Steel	Galvanized finish
N193-839	Round Rail End Cap		Steel	Galvanized finish
N193-714	Round Rail Hanger - 9" Flexible Bolt	9"	Steel w/ Delrin Wheel	Zinc plated
N193-730	Round Rail Hanger - Flexible Strap		Steel w/ Delrin Wheel	Zinc plated
N104-331	Single Box Rail Bracket		Steel	Galvanized finish
N104-380	Single Splice Rail Bracket		Steel	Galvanized finish
N174-433	Top Mount Box Rail with White Flashing	16'	Steel	White finish

HOME HARDWARE

An extensive line of home hardware featuring a variety of decorative finishes, premium materials and unique designs to coordinate every aspect of the home.

Accessories

- Door Stops
- Door Knockers
- Kickplates
- Pull Plates
- Security Guards
- Coat/Hat Hooks
- Handrail Brackets
- House Numbers
- Closet Rods
- Shelf/Rod Brackets



Door Stop



Coat/Hat Hook



HOME HARDWARE



N330-795



N325-522



N248-229



N331-124



N331-140



N331-355



N325-548



N100-313



N116-830



N264-804

SKU	Product Description	Size	Material	Finish
N330-795	Single Clothes Hook		Die Cast	Oil Rubbed Bronze finish
N325-522	Double Clothes Hook		Die Cast	Satin Nickel finish
N248-229	Heavy Duty Coat/Hat Hook		Die Cast	Brass finish
N325-480	Coat & Hat Hook		Die Cast	Satin Nickel finish
N243-725	Wire Coat/Hat Hook		Steel	Brass finish
N331-066	Heavy Duty Garment Hook		Die Cast	Oil Rubbed Bronze finish
N248-245	Heavy Duty Garment Hook		Die Cast	Brass finish
N199-224	Double Clothes Hook		Die Cast	Brass finish
N100-313	Extra Heavy Pull	6-3/4"	Steel	Zinc plated
N100-289	Extra Heavy Pull	6-3/4"	Steel	Black finish
N331-124	Hinge Pin Door Stop		Die Cast/ Steel / Plastic Tips	Oil Rubbed Bronze finish
N331-140	Spring Door Stop	3"	Steel w/ Plastic Tips	Satin Nickel finish
N331-355	Rigid Door Stop	3"	Die Cast/ Plastic Tips	Oil Rubbed Bronze finish
N154-526	Hinge Pin Door Stop		Die Cast/ Steel / Plastic Tips	Brass finish
N330-803	Rigid Door Stop	3"	Die Cast/ Plastic Tips	Brass finish
N225-987	Floor Door Stop	4"	Rubber	Brown
N246-041	Wall Door Stop		Plastic	White
N213-561	Wall Door Stop		Plastic	White
N830-102	Rigid Door Stops	3"	Die Cast	Satin Nickel finish
N325-548	Handrail Bracket		Die Cast w/ Steel Strap	Satin Nickel finish
N260-018	Picture Hangers		Steel	Brass finish
N260-174	Small Leveling Hanger		Steel	Brass finish
N260-257	Medium Duty Hanging Kit		Steel	Brass finish
N208-645	Friction Lid Support		Steel	Brass finish
N260-331	Mirror Holder	1/8"	Plastic	Clear
N117-754	Screen Door Pull	4-3/4"	Steel	Brass finish
N148-684	Sash Lock		Die Cast	Brass finish
N259-705	Thumb Tack Kit		Steel Plastic Cap	Assorted
N116-830	Utility Pull	5-1/2"	Steel	Black finish
N116-715	Utility Pull	6-1/2"	Steel	Zinc plated
N264-804	Wire - 24 Ga	250'	Steel	Galvanized finish

HINGES

A broad range of residential, commercial and specialty hinges, providing the utmost in security and decorative appeal.

Types of Hinges

- Hinges
- Commercial Hinges
- Door Hinges
- Hinge Accessories
- Specialty Hinges
- Strap and T Hinges



Surface-Mounted Hinge



Decorative Hinge



Square Corner Hinge



HINGES



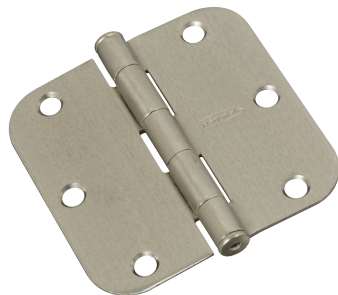
N244-806



N830-437



N830-438



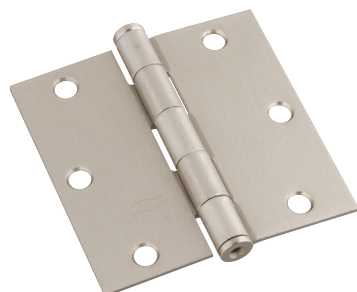
N830-328



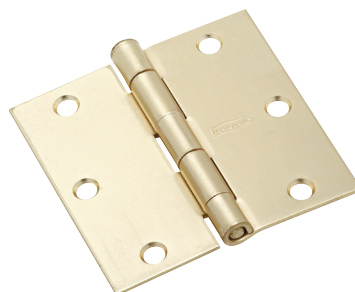
N830-334



N830-325



N830-326



N830-332



N830-323



N135-194

SKU	Product Description	Size	Material	Finish
N830-328	5/8" Round Corner Hinge	3-1/2"	Steel	Satin Nickel
N830-334	5/8" Round Corner Hinge	3-1/2"	Steel	Satin Brass
N830-325	5/8" Round Corner Hinge	3-1/2"	Steel	Oil Rubbed Bronze
N830-411	5/8" Round Corner Hinge	4"	Steel	Satin Nickel
N830-410	5/8" Round Corner Hinge	4"	Steel	Satin Brass
N830-409	5/8" Round Corner Hinge	4"	Steel	Oil Rubbed Bronze
N830-327	1/4" Round Corner Hinge	3-1/2"	Steel	Satin Nickel
N830-333	1/4" Round Corner Hinge	3-1/2"	Steel	Satin Brass
N830-324	1/4" Round Corner Hinge	3-1/2"	Steel	Oil Rubbed Bronze
N830-418	1/4" Round Corner Hinge	4"	Steel	Satin Nickel
N830-417	1/4" Round Corner Hinge	4"	Steel	Satin Brass
N830-416	1/4" Round Corner Hinge	4"	Steel	Oil Rubbed Bronze
N830-326	Square Corner Hinge	3-1/2"	Steel	Satin Nickel
N830-332	Square Corner Hinge	3-1/2"	Steel	Satin Brass
N830-323	Square Corner Hinge	3-1/2"	Steel	Oil Rubbed Bronze
N830-404	Square Corner Hinge	4"	Steel	Satin Nickel
N830-403	Square Corner Hinge	4"	Steel	Satin Brass
N830-402	Square Corner Hinge	4"	Steel	Oil Rubbed Bronze
N225-920	Stainless Steel Hinge	3-1/2"	Steel	Stainless Steel
N225-938	Stainless Steel Hinge	4"	Steel	Stainless Steel
N135-194	Cabinet Hinge	1"	Steel	Brass
N173-823	Café Door Hinge	.	Steel /Die Cast/ Delrin	Brass
N244-780	Surface-Mounted Hinge	3"	Steel	Brass
N830-435	Surface-Mounted Hinge	3"	Steel	Satin Nickel
N830-436	Surface-Mounted Hinge	3"	Steel	Oil Rubbed Bronze
N244-806	Surface-Mounted Hinge	3-1/2"	Steel	Brass
N830-437	Surface-Mounted Hinge	3-1/2"	Steel	Satin Nickel
N830-438	Surface-Mounted Hinge	3-1/2"	Steel	Oil Rubbed Bronze
N129-171	Extra Heavy T-Hinge	6"	Steel	Zinc Plated
N236-025	Extra Heavy T-Hinge	4"	Steel	Zinc Plated

SECURITY HARDWARE

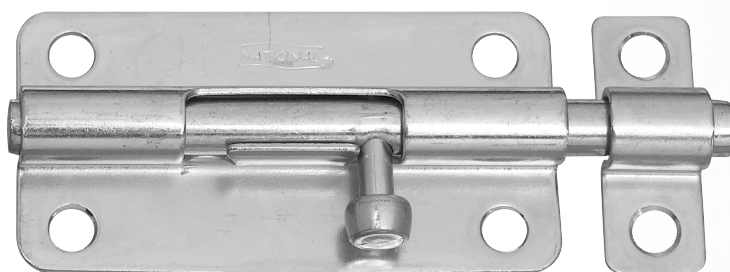
Safety and security items that add additional protection to the doors and windows in your home.

Accessories

- Bar Holders
- Barrel Bolts
- Door Security
- Hasps
- Window Security
- Utility Locks



Keyed Hasp Lock



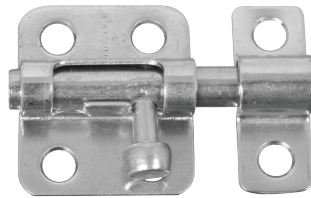
Barrel Bolt - Stainless Steel



SECURITY HARDWARE



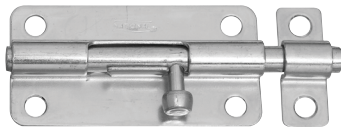
N102-277



N151-225



N235-309



N151-654



N183-590



N206-953



N192-484



N129-577



N208-512



N238-972

SKU	Product Description	Size	Material	Finish
N102-277	V30 3-1/4 Sfty Hasp Zn	3-1/4"	Steel	Zinc
N151-225	V833 2 Window Bolt Zn	2"	Steel	Zinc
N235-309	Sp15bc Open Bar Hldr Zn Zn	6.3" X 1.5"	Steel	Zinc
N102-384	V30 4-1/2 Sfty Hasp Zn	4-1/2"	Steel	Zinc
N151-654	V834 4 Barrel Bolt Zn	4"	Steel	Zinc
N151-555	V834 3 Barrel Bolt Zn	3"	Steel	Zinc
N151-449	V834 2-1/2 Barl Bolt Zn	2-1/2"	Steel	Zinc
N102-145	V30 2-1/2 Sfty Hasp Zn	2-1/2"	Steel	Zinc
N102-921	V32 4-1/2 Swiv Hasp Zn	4-1/2"	Steel	Zinc
N102-855	V32 3-1/4 Swiv Hasp Zn	3-1/4"	Steel	Zinc
N235-291	Sp14bc Closd Bar Hldr Zn Zn	6.4" X 1.5"	Steel	Zinc
N151-266	V833 2 Window Bolt Brs	2"	Steel	Zinc
N162-388	V831 6 Hvy Barl Bolt Zn	6"	Steel	Zinc
N102-459	V30 6 Sfty Hasp Zn	6"	Steel	Zinc
N151-480	V834 2-1/2 Barl Bolt Brs	2-1/2"	Solid Brass	Brass
N162-370	V831 4 Hvy Barl Bolt Zn	4"	Steel	Zinc
N103-259	V34 3-1/4 Dbl Hasp Zn	3-1/4"	Steel	Zinc
N102-962	V32 6 Swiv Hasp Zn	6"	Steel	Zinc
N183-590	V807 Door Chain Brs	N/A	Solid Brass	Brass
N151-589	V834 3 Barrel Bolt Brs	3"	Solid Brass	Brass
N151-688	V834 4 Barrel Bolt Brs	4"	Solid Brass	Brass
N151-738	V834 5 Barrel Bolt Zn	5"	Steel	Zinc
N102-020	V30 1-3/4 Sfty Hasp Zn	1-3/4"	Steel	Zinc
N206-953	Vka827 Hasp Lck Kyd-Alk Chr	4-1/2"	Steel	Chrome
N151-621	V834 4 Barrel Bolt Blk	4"	Steel	Black
N151-118	V832 5 Xhvy Barl Bolt Zn	5"	Steel	Zinc
N192-484	Vka825 3/4 Utlty Lck Kyd Alk Chr Key 699	3/4"	Steel	Chrome
N183-780	V827 Key Hasp Lock Chr	4-1/2"	Steel	Chrome
N151-431	V834 2-1/2 Barl Bolt Blk	2-1/2"	Steel	Black
N151-522	V834 3 Barrel Bolt Blk	3"	Steel	Black

WIRE GOODS HARDWARE

A full line of wire goods offered in a variety of materials.

Accessories

- Bolts
- Hooks & Rings
- Screw Eyes
- Turnbuckles



Hook/Eye Turnbuckle



Square U Bolt



WIRE GOODS HARDWARE



N220-517



N220-608



N220-665



N221-473



N220-434



N121-616



N222-364



N117-994



N197-178



N221-911

SKU	Product Description	Size	Material	Finish
N220-517	2040BC 4 CEILING HOOK ZN	#4, 3-7/8"	Steel	Zinc plated
N220-608	MP2053B TARP/ROPE HOOK	3-1/2"	Steel	Zinc plated
N220-665	2150BC 1/4X3-3/4 LAG SC	1/4" x 3-3/4"	Steel	Zinc plated
N221-473	MP2160B 3/8X4 EYE BLT ZN	3/8" x 4"	Steel	Zinc plated
N220-434	2014BC 2 LG SCREW EYE ZN	#2, 2-5/8"	Steel	Zinc plated
N221-267	2160BC 3/8X4 EYE BLT ZN	3/8" x 4"	Steel	Zinc plated
N220-681	2150BC 5/16X4 LAG SC EYE	5/16" x 4"	Steel	Zinc plated
N221-374	MP2160B 1/4X2 EYE BLT ZN	1/4" x 2"	Steel	Zinc plated
N220-707	2150BC 3/8X4-1/2 LAG SC	3/8" x 4-1/2"	Steel	Zinc plated
N220-731	MP2150B 1/4X3-3/4 LAG SC	1/4" x 3-3/4"	Steel	Zinc plated
N221-408	MP2160B 1/4X4 EYE BLT ZN	1/4" x 4"	Steel	Zinc plated
N220-418	2014BC 000 LG SCRW EYE	#000, 3-7/8"	Steel	Zinc plated
N220-426	2014BC 0 LG SCREW EYE ZN	#0, 2-7/8"	Steel	Zinc plated
N221-085	2160BC 1/4X2 EYE BOLT ZN	1/4" x 2"	Steel	Zinc plated
N221-432	MP2160B 5/16X3-1/4 EYE	5/16" x 3-1/4"	Steel	Zinc plated
N221-218	2160BC 5/16X3-1/4 EYE	5/16" x 3-1/4"	Steel	Zinc plated
N220-723	2150BC 7/16X5-1/4 LAG SC	7/16" x 5-1/4"	Steel	Zinc plated
N197-178	V2016 8 LG SCREW EYE SS	#8, 1-5/8"	Steel	Zinc plated
N220-509	2040BC 3 CEILING HOOK ZN	#3, 4-1/8"	Steel	Zinc plated
N221-119	2160BC 1/4X3 EYE BOLT ZN	1/4" x 3"	Steel	Zinc plated
N222-083	2190BC 132 U BOLT ZN	#132-1/4"x1-1/8"x2-1/4"	Steel	Zinc plated
N221-317	2160BC 1/2X6 EYE BLT ZN	1/2" x 6"	Steel	Zinc plated
N221-499	DP2160B 3/8X6 EYE BLT ZN	3/8" x 6"	Steel	Zinc plated
N221-275	2160BC 3/8X5 EYE BLT ZN	3/8" x 5"	Steel	Zinc plated
N220-483	2040BC 0 CEILING HOOK ZN	#0, 4-15/16"	Steel	Zinc plated
N220-756	MP2150B 5/16X4 LAG SC	5/16" x 4"	Steel	Zinc plated
N221-911	MP2172B 1/4X7-1/2 TBKL	1/4" x 7-1/2"	Steel	Zinc plated
N117-994	V2000 3 HOOK/EYE ZN	3"	Steel	Zinc plated
N222-364	2192BC35 SQ U BOLT ZN	#535-5/16"x2"x5"	Steel	Zinc plated
N121-616	V2076 1-1/2 HY OPEN S HK	1-1/2"	Steel	Zinc plated

GARAGE HARDWARE



N280-586



N280-610



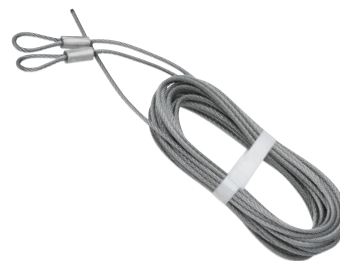
N280-636



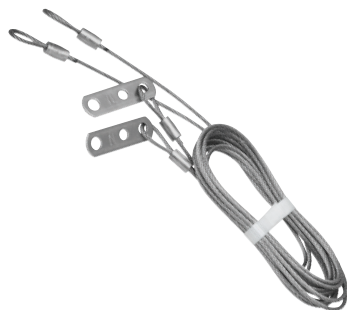
N280-016



N280-073



N280-313



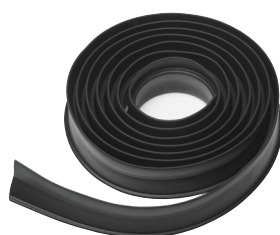
N280-388



N281-089



N281-105



N281-279

SKU	Product Description	Size	Material	Finish
N280-453	Bottom Lift/Roller Brackets	5-11/16" in length	Steel	Galvanized
N280-495	Top Roller Brackets	2-1/2" wide	Steel	Galvanized
N280-313	Lift Cable	12' x 1/8"	Steel	Galvanized
N280-388	Safety Cable	8'8" x 1/8"	Steel	Galvanized
N280-156	#1 Hinge	7-3/8" high	Steel	Galvanized
N280-172	#2 Hinge	7-3/8" high	Steel	Galvanized
N280-198	#3 Hinge	7-3/8" high	Steel	Galvanized
N280-586	Universal Lift Handle	7-1/4" in length	Steel	Galvanized
N280-610	Universal Locking T-Handle	Shaft: 5/16" sq. x 4"	Die Cast/Steel	Chrome
N280-636	Universal Locking L-Handle	Shaft: 5/16" sq. x 3-11/16"	Die Cast/Steel	Chrome
N280-651	Outside Locking Handle	7-1/2" L, shaft: 5/16" sq. x 3-1/4"	Die Cast/Steel	Chrome
N280-701	Swivel Lock	For 5/16" sq. shaft	Steel	Zinc plated
N280-727	Side Lock	5-1/2" wide	Steel	Zinc plated
N280-743	Side Lock	7-1/2" wide	Steel	Zinc plated
N280-768	Dead Bolt Rim Cylinder	3-1/8" long, 2" long shaft	Steel	Aluminum
N280-784	Dead Bolt Lock, Inside Center Mount	.	Steel	Aluminum
N280-800	Snap Lock w/Strike	.	Steel	Galvanized
N280-834	Electric Key Switch	1-5/8" wide x 2-1/2" in high	Plastic	Gray
N280-552	Pulley	3"	Steel	Galvanized
N280-537	Pulley	4"	Steel	Galvanized
N280-107	Nylon Roller	1-3/4" roller, 4-3/4" stem, 5/16" shaft	Steel/Nylon	Zinc plated
N280-016	Standard Roller	1-7/8" roller, 4-3/8" stem, 7/16" shaft	Steel	Plain Steel
N280-073	Standard Roller w/Nylon Wheel	1-3/4" roller, 4" stem, 7/16" shaft	Steel/Delrin	Plain Steel
N281-022	Extension Springs w/Safety Cable	25" x 110# (White)	Steel	Black
N281-063	Extension Springs w/Safety Cable	25" x 120# (Green)	Steel	Black
N281-071	Extension Springs w/Safety Cable	25" x 130# (Yellow)	Steel	Black
N281-089	Extension Springs w/Safety Cable	25" x 140# (Blue)	Steel	Black
N281-105	Extension Springs w/Safety Cable	25" x 150# (Red)	Steel	Black
N281-279	Weatherstripping	10'	Vinyl	Black
N281-295	Weatherstripping	16'	Vinyl	Black

NOTES





© 2017 SPECTRUM BRANDS, INC.,
National Hardware is a trademark of Spectrum Brands, Inc.
www.natman.com
(800) 346-9445