

FIRED EARTH THIN BRICK



THIN BRICK NAME: Comparable to Cleveland

THIN BRICK FLATS



Chicago

SKU:
680485
Dimensions:
1/2"W x 2-1/4"H x 7-5/8"L



Cleveland

SKU:
680483
Dimensions:
1/2"W x 2-1/4"H x 7-5/8"L

Thin Brick Corner and Flat



THIN BRICK INSTALLATION METHODS

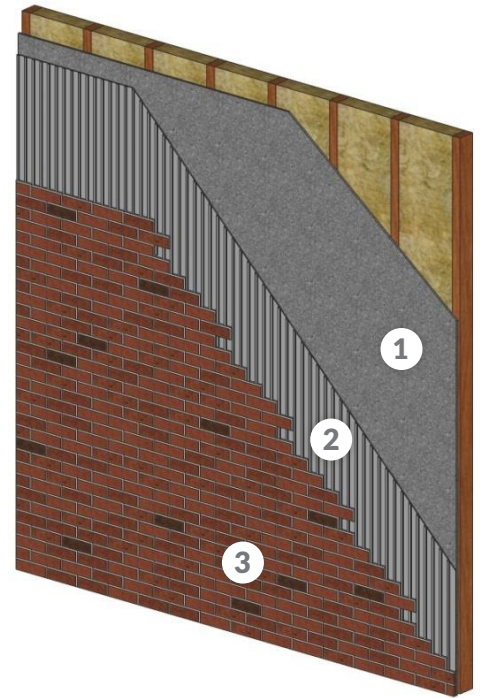
METHOD 1: STANDARD THIN-SET MORTAR

Step 1: (Framed Installation) Install Cement Board
Install cement board as per manufacturer's instructions.

Step 2: Apply Polymer Modified Thin-Set Mortar
Using a trowel, spread mortar across substrate in an upwards direction with the flat side of the trowel. Run notched side of the trowel across mortar to create a grooved finish. Apply only a workable area of mortar that will allow veneer to be properly set before surface drying occurs. This area will vary depending on site environmental conditions.

Step 3: Install Thin Brick Masonry Units
Clean unit backs of any dust, laitance, loose material and any excess film that could impede bond. With a trowel "back-butter" the veneer units, if required to fill any surface irregularities or to ensure 100% coverage. Beginning with the corner pieces, work either from the top-down, or bottom-up. Press the corner piece onto the wall, rotating back and forth slightly, and forcing some of the mortar to "squeeze out". Remove this excess mortar with a square flat trowel and use the excess on the next piece of veneer. Remove excess mortar from around or on the veneer units with a stiff brush. Check for 100% mortar coverage by removing two stone units from the wall per bag of mortar used. Grout the joints using pointing mortar using a grout bag. Tool joints when thumbprint hard using a metal jointing tool.

Framed Wall
Installation Using
Thin-Set Mortar

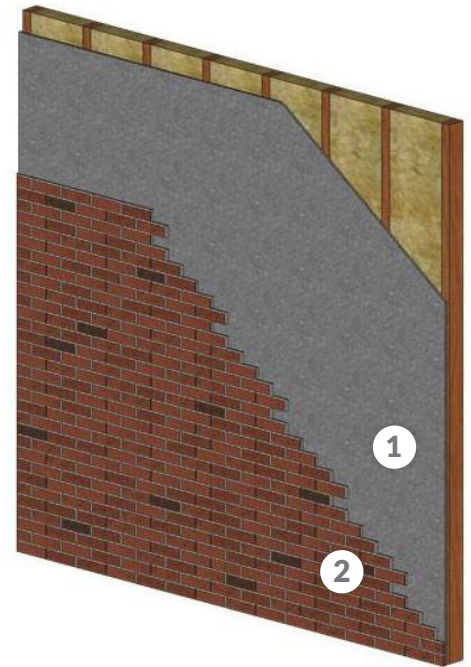


METHOD 2: FAST-ADHESIVE METHOD

Step 1: (Framed Installation) Install Cement Board
Install cement board as per manufacturer's instructions. Thin brick may also be applied directly over water-resistant drywall ("green board" or "blue board"). Applying thin brick directly over standard drywall may negatively affect joint quality and overall durability.

Step 2: Install the Thin Brick
Clean unit backs of any dust, laitance, loose material and any excess film that could impede bond. Start with the corner pieces, working either from the top-down, or bottom-up. Using a non-sagging adhesive, apply a generous bead to the back of each brick and firmly press into place on the wall. After the corner pieces are installed, apply flat pieces starting at an outside corner and working your way in. Let the adhesive dry overnight. Grout the joints using pointing mortar using a grout bag. Tool joints when thumbprint hard using a metal jointing tool.

Framed wall
Installation Using Fast
Adhesive Method



METHOD 3: FLOOR APPLICATION METHOD

To install thin brick as a floor application, any of the industry-standard methods used to install traditional tile flooring are acceptable.

NOTE: Thin Brick can be installed with "floating joints." However, to achieve an authentic brick finish, using pointing mortar using a grout bag is recommended.

Additional Information

1. As building codes vary by region, it is important to check local building codes for proper installation guidelines.
2. This Installation Guide serves as reference only and is not meant to act as a substitute for professional advice.
3. Considerations must be made for hot & cold weather construction. For additional information on hot & cold weather construction, refer to TMS 602-11/ACI 530.1-11/ASCE 6-11, Specification for Masonry Structures, Sections 1.8C and 1.8D.

REAL CLAY BRICK. REAL THIN.



Comparable to Cleveland

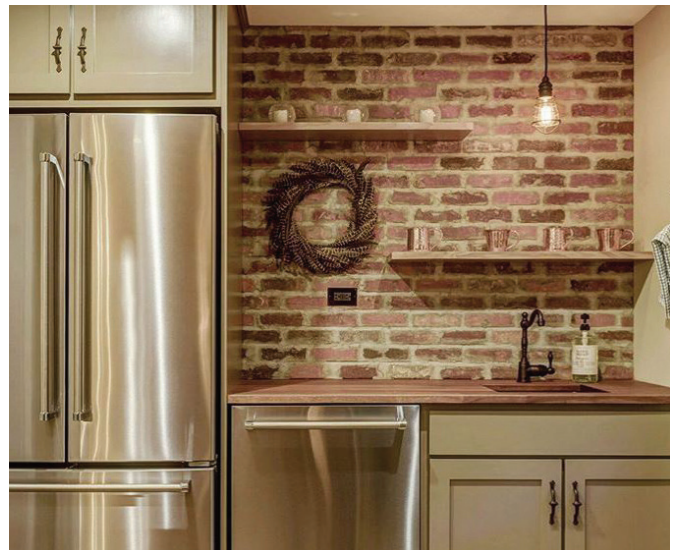


Comparable to Cleveland



Comparable to Cleveland

Fired Earth Thin Brick is real, kiln fired brick cut thin, and is a practical solution for virtually any exterior or interior application. Because thin brick is so lightweight, there is no longer the need for load-bearing walls or reinforced sub floors. Each color within the series is influenced by provinces throughout North America, providing your project with a familiar and inspiring nuance unlike any other masonry product.



Comparable to Cleveland