



# MAGMA SERIES

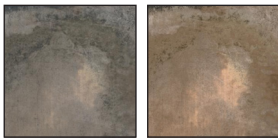
## PORCELAIN

COUNTRY OF ORIGIN		TEST RESULTS		
Turkey			STANDARD	RESULT
RECOMMENDED INSTALLATIONS		Water Absorption	10545-3	A≤0.3%
<b>F</b>	<b>W</b>	Surface Abrasion		
<b>B</b>	<b>A</b>	Magma Charcoal	10545-7	PEI III
<b>SP</b>	<b>EX</b>	Magma Copper	10545-7	PEI IV
FLOOR	WALL	Deep Surface Abrasion EN-101		8 MOHS
BACKSPLASH	ACCENT	Slip Resistance	DCOF WET	0.60-0.65
SHOWER PAN	EXTERIOR		DCOF DRY	0.63-0.68
		Stain Resistance	10545-14	Class 5
		Frost Resistance	10545-12	Resistant
PRODUCT	DESCRIPTION	SIZE	FINISH	
680160	Magma Charcoal 45cm	18in	Matte	
680161	Magma Copper 45cm	18in	Matte	

### MAGMA SERIES

When looking to create a signature look for your home, look no further than the 18" Magma Charcoal and Magma Copper porcelain floor tiles from Fired Earth Ceramics. A creamy blend of charcoal, olive, grey and tan compliment one another in the Magma Charcoal tiles, while a rich tones of olive, burgundy and taupe mix together to create opulent veining throughout the stunning Magma Copper foundation. Both durable and elegant, these porcelain tiles can be used to create a unique environment in your bathroom or entryway.

### AVAILABLE COLORS



Magma Charcoal Magma Copper

### AVAILABLE SIZES



The images shown here are only representative, we strongly suggest you view the product in person and speak with a Tile Shop representative before purchasing. Sizes and finishes may vary from the selection shown here due to availability. Contact our customer service representatives or your local showroom for additional information.

